



SIGNA™ Victor 1.5T

Win the day

Win the day

As a healthcare provider in today's world, you've been facing surmounting pressures, from budget constraints to increasing patient volumes and staff burnout. You need a solution that helps you not just get through the day, but to win the day.

Introducing SIGNA™ Victor

Our newest 1.5T MRI scanner houses some of the industry's most proven and powerful technology. Its green magnet and breakthrough solutions, such as the new SIGNA™ One user experience, groundbreaking AIR™ Coils and AIR™ Recon DL, help address today's challenges like rising power costs, staff burnout and managing high patient volumes while maintaining satisfaction. Win the day with SIGNA™ Victor.





POWERFUL AND SUSTAINABLE MR

High performance that requires 70% less helium and reduces power consumption by more than 10%



AI-ENABLED SOLUTIONS

AI solutions maximize productivity, simplify setup and improve image quality without scan time penalty



ENHANCED PATIENT COMFORT

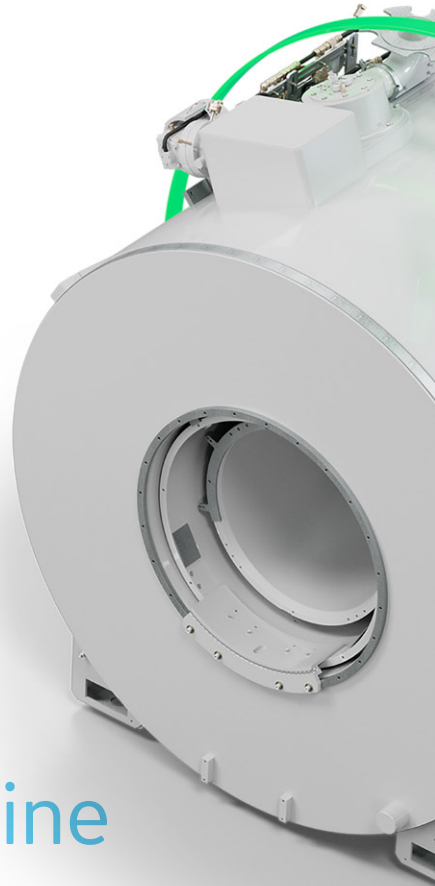
AIR™ Coils provide 360 degrees of comfort, while AI solutions shorten patient in-bore time



SIGNA™ ONE

Anticipatory interface has no learning curve for a smooth, efficient experience

EFFICIENCY



Lean, green scanning machine

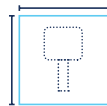
To help mitigate emerging sustainability challenges, SIGNA™ Victor utilizes several green features. Its latest generation magnet technology dramatically reduces helium usage while maintaining exceptional performance. SIGNA™ Victor's small footprint and lower power consumption help reduce rising real estate and energy costs.



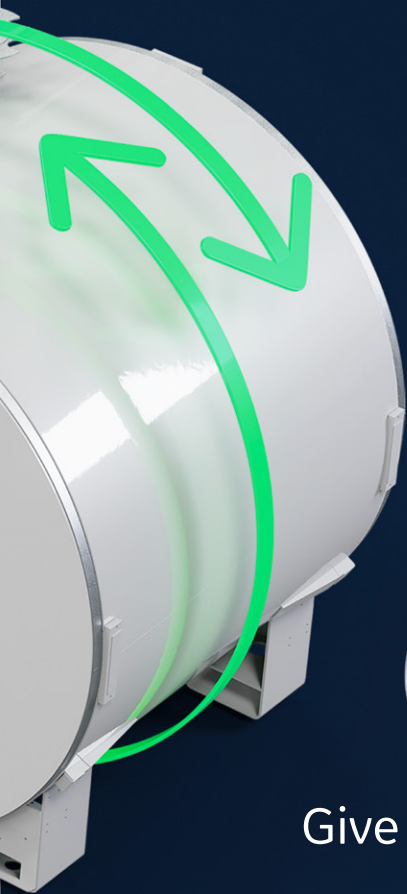
>10% REDUCTION
IN POWER CONSUMPTION



70% LESS
HELIUM USAGE



SMALL 24 m²
FOOTPRINT



Give your system a Lift

When your existing system is ready for an upgrade, our SIGNA™ Victor Lift program allows you to access the latest technology without replacing your magnet. This gives you next-generation imaging capability and further maximizes your investment by providing the benefits of a complete system replacement with less costs.



SIGNA™ Victor also features a wide-bore-ready magnet design, allowing you to further future-proof your investment.



Powerful, yet smartly versatile

One of the most pressing challenges in healthcare is the immense pressure inflation places on your return on investment. The flexibility of SIGNA™ Victor helps make the most out of your investment by ensuring that you will always have the most effective technology for your specific clinical needs. SIGNA™ Victor provides the best balance of performance and efficiency with powerful technology and versatile capability that help you optimize your operations.



35/140

GRADIENT PERFORMANCE



UP TO 64
RF CHANNELS

FOR MORE COIL OPTIONS



MODULAR DESIGN

CONFIGURABLE TO MEET ANY REQUIREMENT

A breath of fresh AIR™ for productive scanning

We know how challenging it can be to keep up with growing patient volumes while still delivering high-quality care. The AI-enabled workflows and patient-centered solutions that come with SIGNA™ Victor will help you rise to any challenge by enabling high patient throughput without compromising patient comfort.



AIR Touch™

AIR Touch™ technology simplifies scan setup by automatically selecting the best coil element combinations for each patient over the precise area of interest.



AIR x™

AIR x™ is our AI-based solution for intelligent and automatic MR slice prescription. It facilitates consistent and accurate images regardless of pathology, patient position, time between scans and technologist variability.

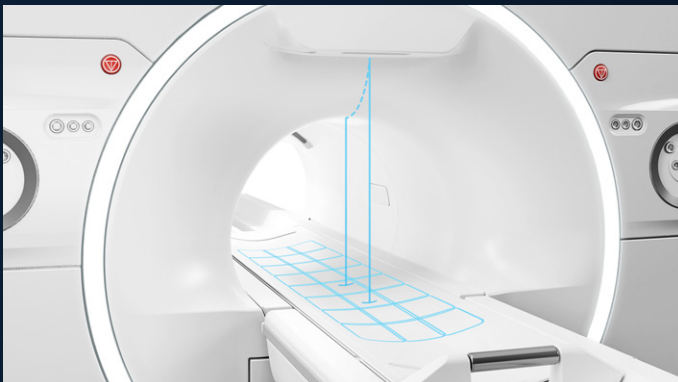


AIR™ Coils

Our blanket-like AIR™ Coils are form-fitting and provide 360 degrees of coverage, transforming your patient experience and granting you more positioning freedom. They're ultra-light for maximum patient comfort, plus they enable a simplified, faster workflow.

360 degrees of patient comfort

The platform includes a wider patient entry to maximize clearance. This added space, along with the ability to scan feet-first, will support claustrophobic patients and optimize comfort.



Express mode, activated with SIGNA™ One

Amidst today's labor shortage and burnout challenges, SIGNA™ One, our new imaging platform, enables you to maintain optimal operations. The platform employs a user-centered design and anticipatory workflow to improve efficiency and lessen the workflow burden on users. It has no learning curve and anticipates your next move. SIGNA™ One express mode enables beginner and expert users alike to complete consistent and accurate examinations in a few clicks.



**VIRTUALLY NO
LEARNING CURVE**



**34% LESS
SETUP TIME**



**66% FEWER
CLICKS**



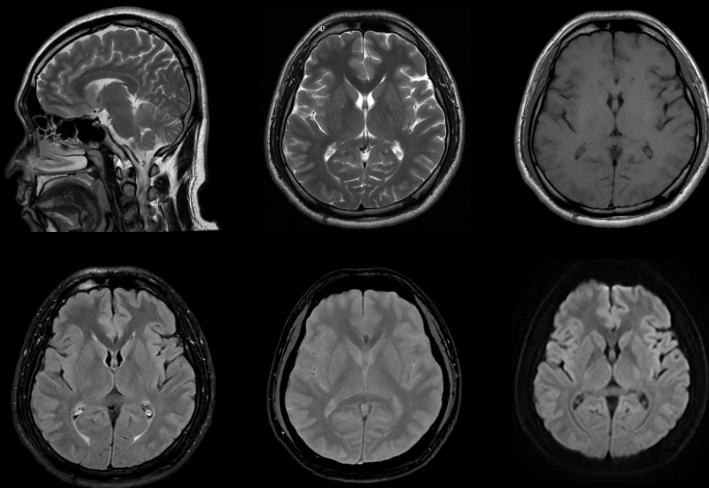
Digital Expert Access

Digital Expert Access is a real-time, remote scan assistance solution that helps optimize staff utilization, expand care capacity and increase imaging consistency to enable improved operational efficiency and quality.

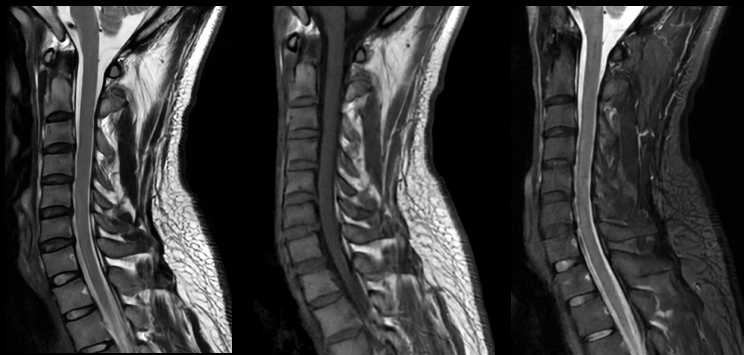
A smarter solution for extraordinary images

AIR™ Recon DL takes advantage of the power of deep learning to improve MR images and reduce scan times. This innovative AI technology increases SNR, resulting in clearer and pin-sharp images.

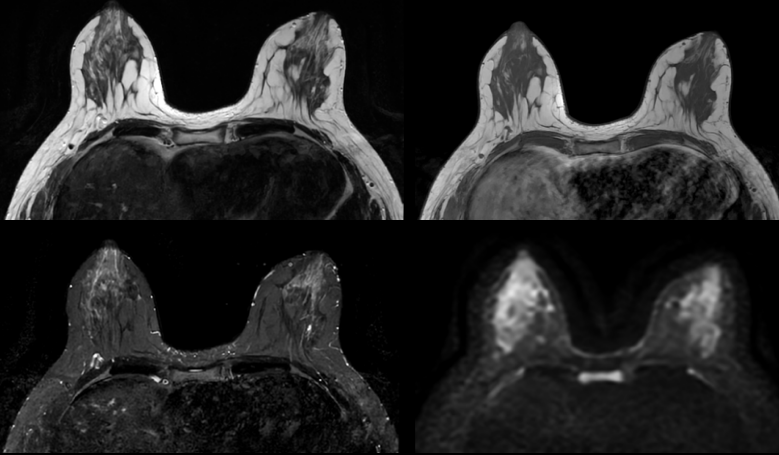
AIR™ Recon DL standard brain scan in less than 8 minutes



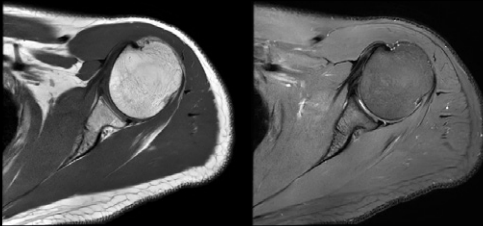
AIR™ Recon DL routine cervical spine exam in less than 8 minutes



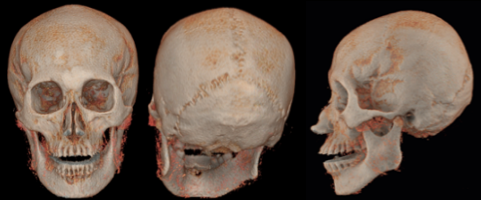
AIR™ Recon DL high resolution bilateral breast images



AIR™ Recon DL and AIR™ MP Coil
motion-artifact-free shoulder exam

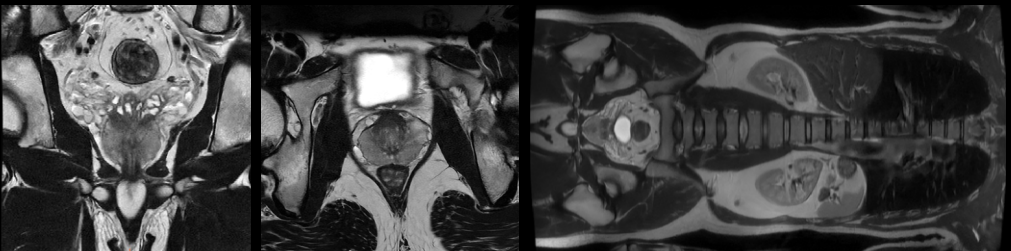


oZTEo head scan



CT-like bone contrast

AIR™ Recon DL PI-RADS® compliant exam in less than 15 minutes*



74 cm

*Adheres to PI-RADS v2.1 guidelines
at 1.5T without endo-rectal coil

AIR™ Coil combinations allow large
coverage without patient and/or coil
repositioning for powerful TNM screening
in body oncology exams



The software interface on the monitor consists of several panels:

- Main Table:** A large table with columns for 'ID', 'Name', 'Date', and 'Status'. It contains numerous rows of data, with one row highlighted in blue.
- Right Panel (Table):** A smaller table with columns for 'ID', 'Name', and 'Status'. It contains a few rows of data.
- Right Panel (Image):** A medical scan image, likely an MRI of a spine, with a date and time stamp: 'May 23, 2018 11:11:11 PM'.

Victory is yours

The work you do is far from easy. We want to help ease your mounting burdens so that you can feel ready for what each day holds. With SIGNA™ Victor's groundbreaking technology and innovative solutions, you'll be able to face your day-to-day challenges with ease, and you'll have everything you need to win the day.





Win the day with SIGNA™ Victor

If you're interested in learning more, please contact a representative for a product demo.

About GE Healthcare:

GE Healthcare is the \$18 billion healthcare business of GE (NYSE: GE).

As a leading global medical technology and digital solutions innovator, GE Healthcare enables clinicians to make faster, more informed decisions through intelligent devices, data analytics, applications and services, supported by its Edison intelligence platform. With over 100 years of healthcare industry experience and around 50,000 employees globally, the company operates at the center of an ecosystem working toward precision health, digitizing healthcare, helping drive productivity and improve outcomes for patients, providers, health systems and researchers around the world.

Follow us on Facebook, LinkedIn, Twitter, and Insights for the latest news, or visit our website www.gehealthcare.com for more information.

© General Electric Company, 2022. All rights reserved.

GE, the GE Monogram, SIGNA and AIR are trademarks of General Electric Company.

JB22827XX