



A WIDE SET OF DXA CLINICAL APPLICATIONS

BASIC BONE

AP Spine

Provides BMD estimate for lumbar spine.

Forearm

Provides BMD estimate for: Radius 33%, Radius UD, Total Radius plus Ulna. Both seated and supine options.

Femur/Dual Femur

Provides BMD estimate for proximal femur, on one or both femurs in one scan protocol.

ScanCheck

A 34-point check providing advanced analysis of spine, femur, forearm and total body with alerts for abnormalities. Includes alerts for high density areas, high spine curvature, unusual T-score and more.

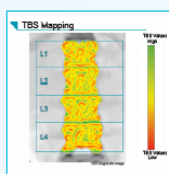
FRAX® Fracture Risk Tool¹

Provides estimates of 10-year probability of both hip fracture and a major osteoporotic fracture for ages 40-90 years.

Dual-energy Vertebral Assessment (DVA)

LVA and APVA in one scan protocol to identify deformities and estimate vertebral heights. Provides BMD estimate for lumbar spine.

ADVANCED BONE



Integrated TBS (Trabecular Bone Score)²

Provides assessment of bone micro-architecture for use in determination of fracture risk. Comprehensive reporting for BMD, FRAX and TBS together. A complimentary trial is available for customers new to TBS.

Pediatrics

Total body scan for BMD, BMC, fat and lean mass for patients from birth to 20 years; optional spine and femur measurements.

Hand Measurement

Complete acquisition of the hand with automated TOTAL ROI and customs analysis.

Orthopedic Knee

Provides an estimate of bone mineral density around knee implants pre- and post-surgery.

Orthopedic Hip

Provides an estimate of bone mineral density around hip implants and visualizes 7 or 19 Gruen zones.

Atypical Femur Fracture (AFF)

Entire femur image with quantitative measurement of "beaking" to identify focal thickening along the lateral cortex. Displays trending with multiple scans.

Spine Geometry

Lateral and anterior views of the spine with soft tissue equalization to assess spinal curvature using Cobb angles.

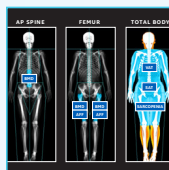
Small Animal Body Scan

For research use on laboratory animals and other non-human subjects.

Advanced Hip Analysis

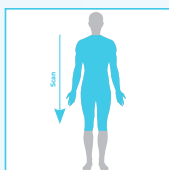
Provides measurement of Hip Axis Length (HAL) and a mean value of HAL on femur images for Asian and Caucasian females. Calculates Hip Geometry values used to evaluate the structural properties of the hip.

TOTAL BODY



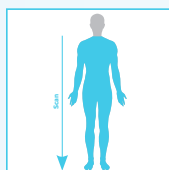
DXAVision™

Provides one unified workflow and comprehensive reporting for BMD, AFF,³ VAT and SAT.³ Designed to improve operator efficiency with a scan time up to 40% faster.⁴ Includes Total Body and Smaller Body (ROI) Composition, Total Body Less Head (TBLH) and Neck-to-Knee for Adults.



Neck-to-Knee for Adults⁵

Performs a faster scan by omitting head and lower legs, providing an estimate of total body composition. Included with DXAVision.



Total Body Less Head (TBLH) for Adults⁶

Including the skull can mask changes occurring in other areas of the skeleton; this tool automatically performs a scan from the neck down. Included with DXAVision or Sports Athletic Package.

Total Body BMD

Provides an estimate of total body BMD, plus regional results and trending. Generates Z- and T-scores based on selected reference population.

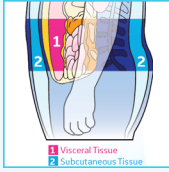
Total Body Composition

Provides Body Composition (total and regional), Lean and Fat tissue composition (in grams and %fat), Android and Gynoid ROI, plus body comp trending. BMI plotted with WHO criteria for obesity; trend graph. Color Fat Mapping available on Lunar iDXA.

Mirror-Image Scan⁷

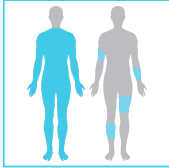
Easily estimate total body composition and BMD for patients that exceed width of scan window.

ADVANCED BODY



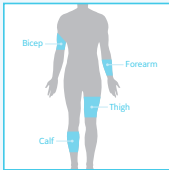
CoreScan with VAT and SAT Results¹

Provides estimates of Visceral and Subcutaneous Adipose Tissue (VAT and SAT), including mass, volume and area for each. Trends and user-defined statistical formats can be displayed.



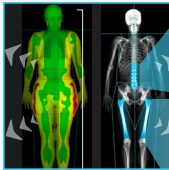
Sports Athletics Package

Includes two time-saving scan protocols: Total Body Less Head (TBLH) for Adults plus Smaller Body Composition for Regions of Interest. Designed to help with faster scanning and less dose when monitoring changes in body composition over time.



Smaller Body Composition (Regions of Interest)⁶

Scan and quickly report on changes in smaller regions: bicep, forearm, thigh and calf. Automatically places cut points at elbows and knees. Included with DXAVision or Sports Athletic Package.



Advanced Analytics

Provides BMD and Body Composition insights with custom equations, metrics and ratios based on 200+ DXA bone and body composition parameters. User-defined classification thresholds, trending and reporting.



Customizable Thresholds (AFF and VAT)^{8,9,10}

Enables setting of custom thresholds to search for correlations: between VAT and the probability of metabolic disorders. Also for correlations between "beaking" found on the femur and the probability of AFF.

Advanced Body Composition

Tools to help patients understand impact of diet, lifestyle and exercise on health and performance. Color Coding of Body Composition (lean, fat and bone distribution) images. Metabolic results include RMR, RSMI and hydration levels (manual entry) for TBW, ICW, ECW, Advanced Composer style sheets. Color mapping tool to set threshold adjustments to fat% (Lunar iDXA™ only).

Sarcopenia²

Calculates Sarcopenia values and thresholds, including 6 published definitions, using appendicular lean mass measurements and manually entered patient data.

PRODUCTIVITY APPS



Composer Reporting

Choose from a wide selection of pre-formatted reports, which can be easily and quickly customized for your facility. An intuitive editing tool enables you to edit these reports or build all new reports without any coding knowledge.

OneScan

Performs a time-saving AP Spine and Dual Femur exam that does not require repositioning between scans.

Quick View

Provides a spine or femur scan in just 10 seconds.

OneVision

Set up multiple measurements within a single exam, to reduce keystrokes and save time.

Multi-User Database

Enables full data SQL for multiple users to share a database between multiple systems. View and analyze patient exams remotely. Software and license up to 40 users.

Practice Management

Provides general purpose tools for patient population reporting and subsequent patient visit follow-up.

DATA AND SECURITY

Advanced Security

Advanced security features are built into enCORE v18 software, which are designed to protect your data. Includes powerful encryption features for data storage and transit, plus user audit trails.

Custom Reference Population

Enables you to create a custom reference population that can be compared to your patients' results.

¹ Not available in Japan. ² Consult for market availability. ³ Requires purchase of AFF application and Corescan (for VAT and SAT) application.

⁴ Data on file with GE Healthcare, April 2019. ⁵ Requires DXAVision. ⁶ Requires DXAVision or Sports Athletics Package. ⁷ Requires Total Body Comp or Total Body BMD. ⁸ Requires Advance Analytics. ⁹ Customizable Threshold for AFF requires AFF Application. ¹⁰ Customizable Threshold for VAT requires CoreScan application.

© 2022 General Electric Company.

GE Healthcare reserves the right to make changes in specifications and features shown herein, or discontinue the product described at any time without notice or obligation. Contact your GE Healthcare representative for the most current information. GE, the GE Monogram, Lunar iDXA, and DXAVision are trademarks of General Electric Company. GE Healthcare, a division of General Electric Company. GE Medical Systems, Inc., doing business as GE Healthcare. FRAX is a registered trademark of the World Health Organization Collaborating Centre for Metabolic Bone Diseases, University of Sheffield, UK. All other third party trademarks are the property of their respective owners.

May 2022 JB016655XX2

