

Versana Balance™

Care with confidence





Quick, efficient imaging for a broad range of patients

Whether you're working in a general practice office, hospital, or other primary care settings, you can count on durable and dependable Versana Balance to deliver world-class care with no compromise on image quality.

Practical and versatile, this system supports a wide range of common ultrasound examinations and enables quick, efficient scanning for busy care environments.

Competent. Efficient. Practical.
World-class ultrasound designed for peace of mind.



Excellent image quality



Time-saving clinical software for liver, thyroid, and breast assessment*



Multi-gesture functionality* enabled by a sensitive touch panel that results in an intuitive, intelligent workflow



Expert service and support



Flexible financing options



Flexibility to grow

*Available on Versana Balance V2.

A partner you can trust

Reach new levels of clinical excellence

See clearly with reliable, excellent image quality that ranks with the best in its class. Versana Balance supports a wide range of exams from routine to specialized while providing functionalities found on our most advanced systems.

- Enhanced 3D/4D performance with **V-Live***
- Define structure borders clearly with **CrossXBeam™** and **SRI-HD**
- Evaluate blood flow for possible vessel-wall irregularities and more with **B-Flow**, **B-Flow Color**, and **Power Doppler Imaging**
- Map the elastic properties and stiffness of soft tissue with strain **Elastography***
- Extend views with panoramic imaging using **LOGIQ™ View**

Expert, dependable service and support

- Easy **e-delivery**** of software updates
- **E-IFU*** (electronic user manuals) for convenient access to product information
- **Probe Check*** evaluates probe element performance, facilitating system maintenance



*Available on Versana Balance V2.

**Offerings may vary by country or region. Please check with your local GE HealthCare representative.

A complete solution

A competent, practical system for efficient imaging

Key features on Versana Balance allow you to enjoy a streamlined workflow and greater productivity. You can also count on clinical support and service excellence to help you get the most out of your system.



Optimize images while scanning with *Whizz*



Enhance or suppress the color flow signal with *Whizz Color Flow**



Automated labeling of the right kidney, gallbladder, and liver in the RUQ with *Whizz Label**



Utilize anatomy specific *productivity packages* that leverage LI-RADS,* TI-RADS,* and BI-RADS* criteria



Evaluate heart segment function with *Auto Ejection Fraction** and *Stress Echo** support



Measure intima-media thickness with *Auto IMT*



Auto Bladder lets you easily calculate bladder volume, including residual urine volume



Create custom exam protocols and standardized workflows with *Scan Assistant*



Obtain desired scan plane with reference tool *Scan Coach*



Upload images and reports to network storage (EMR, PACS) for consultation with patients



Simplify system set-up, and product training with *My Trainer onboarding tool*



Add *Voice Comments* to exams

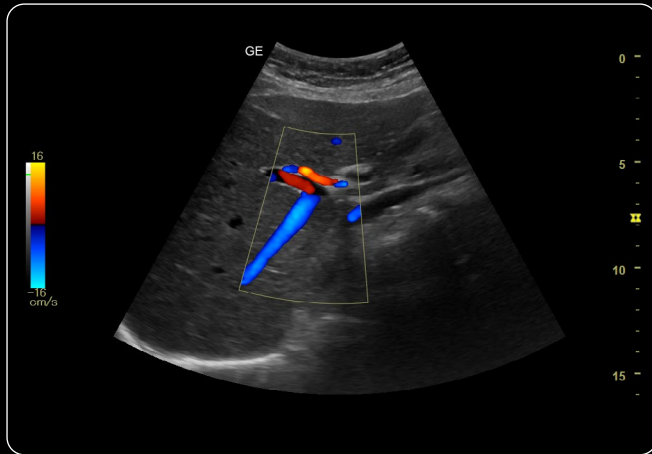


Check out these convenient features

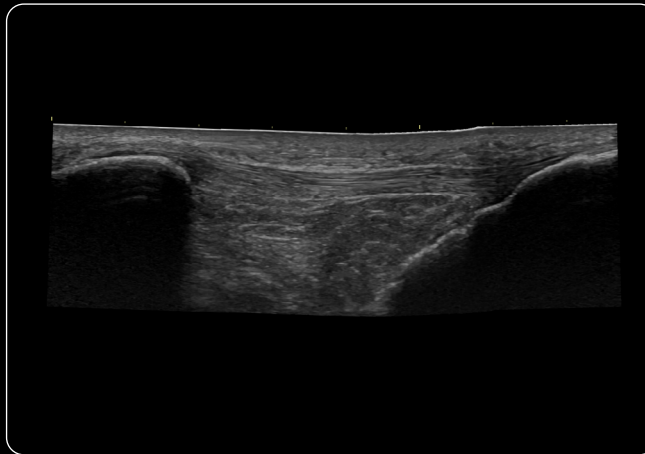


*Offerings may vary by country or region. Please check with your local GE HealthCare representative.

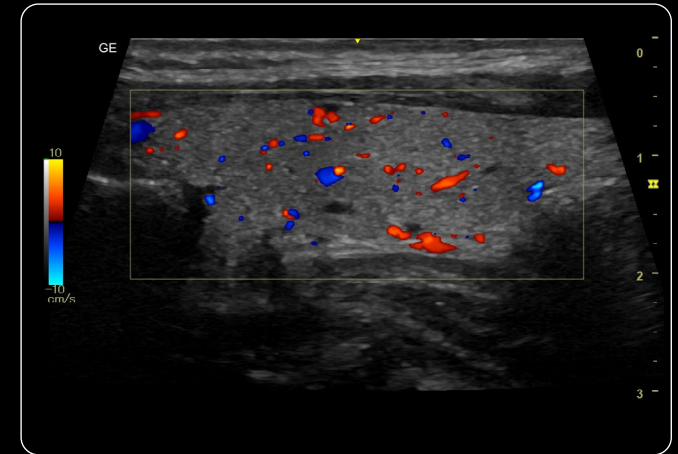
Image gallery



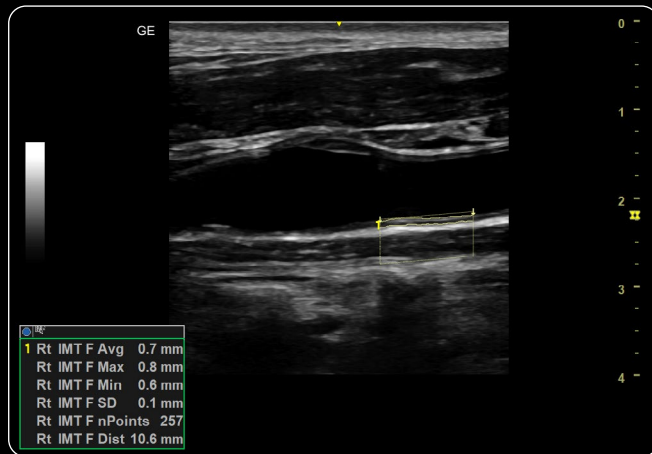
Liver with color Doppler



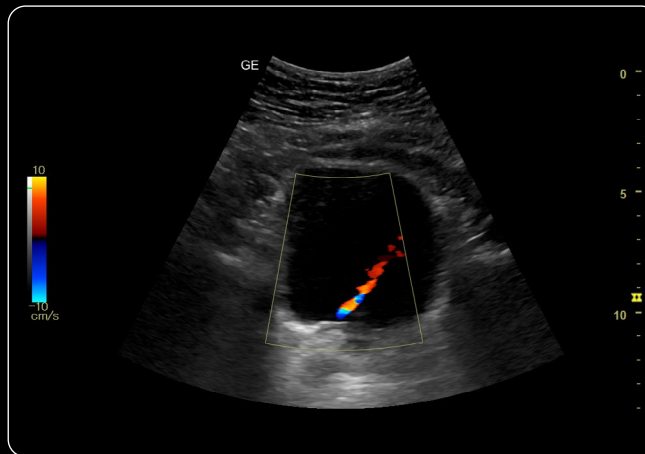
Patellar tendon with LOGIQ View



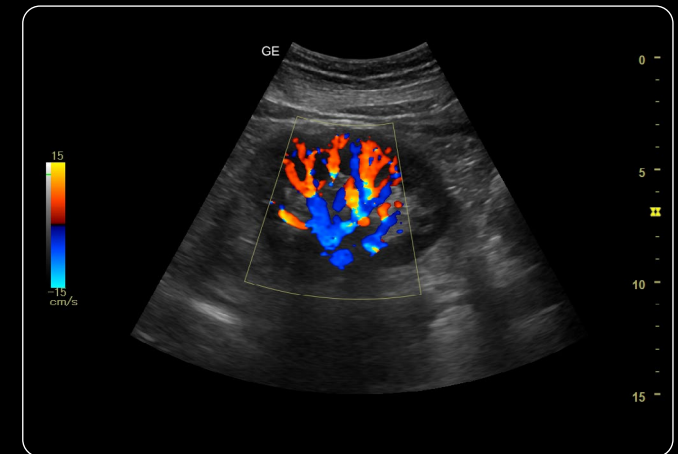
Virtual convex thyroid with color Doppler



Carotid with posterior IMT measurement

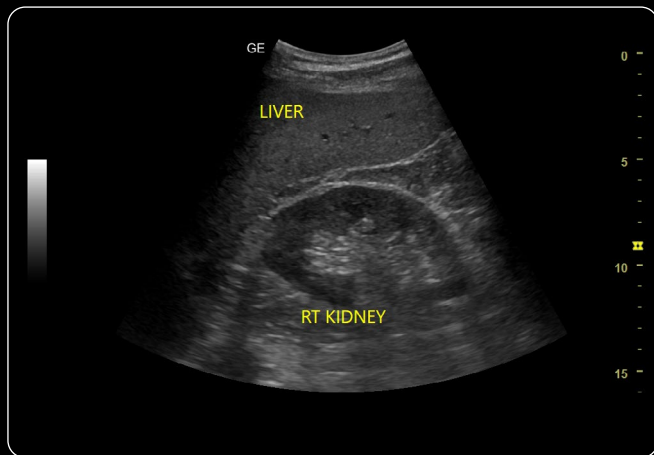


Urinary bladder with ureteral jet

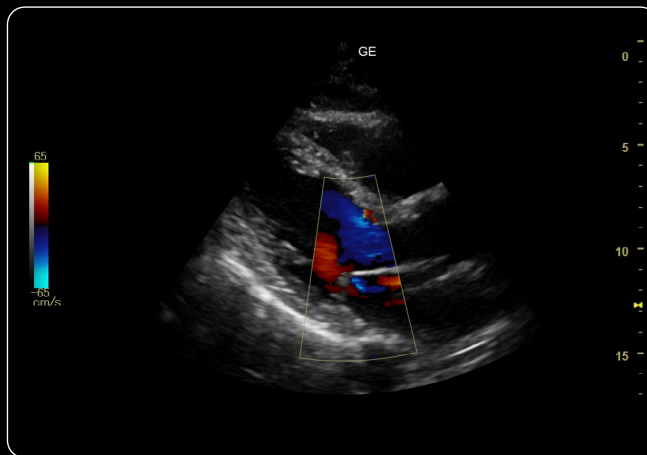


Renal with color Doppler

Image gallery



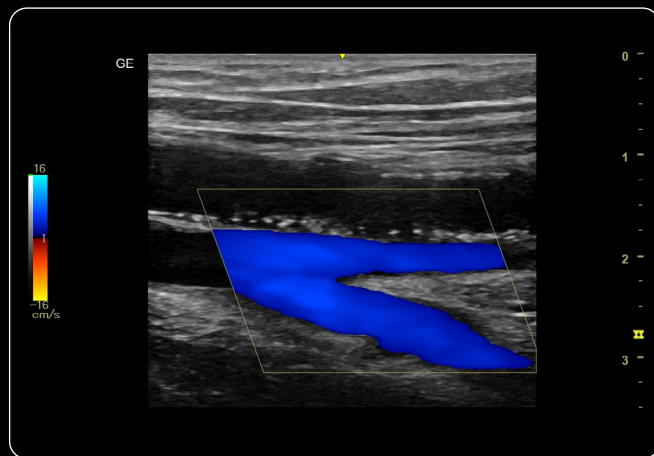
Whizz Label*



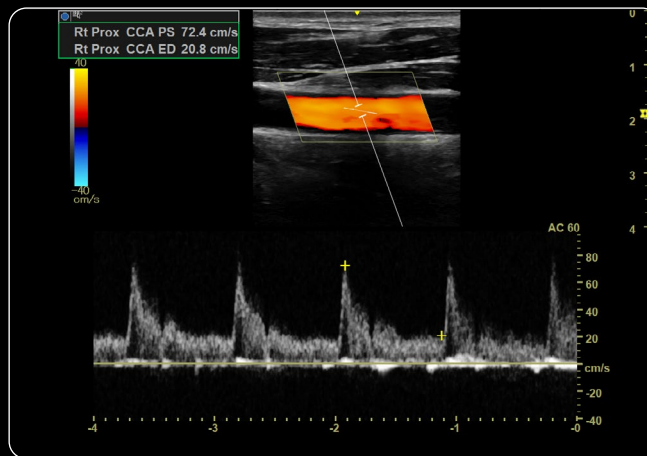
Cardiac parasternal long axis with color Doppler



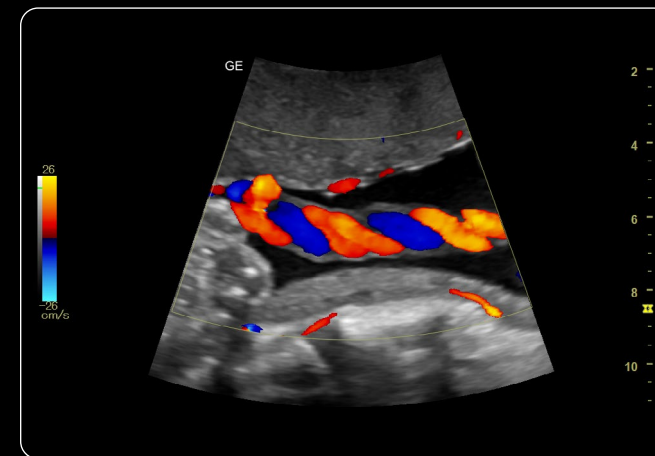
Fetal head



Lower extremity vein color Doppler



PW spectral Doppler carotid



Umbilical cord with color Doppler

An opportunity for growth

Ultrasound that serves you well today and into the future

Versana Balance is designed to grow with you. Start with a console and software package and add probes and optional upgrades as you go.

The expanded probe family includes:

- **L8-18i-RS*** – multi-purpose, high frequency linear probe for musculoskeletal exams, small parts, vascular and superficial scanning
- **12S-RS*** – high frequency sector probe for resolution with cardiac, vascular and pediatric imaging
- **4C-RS** – wide band convex array probe for near-field resolution and detail definition with abdominal, OB/GYN and pediatric imaging
- **L6-12-RS** – linear array probe for resolution with superficial imaging
- **12L-RS** – wide band linear array probe for resolution with superficial imaging

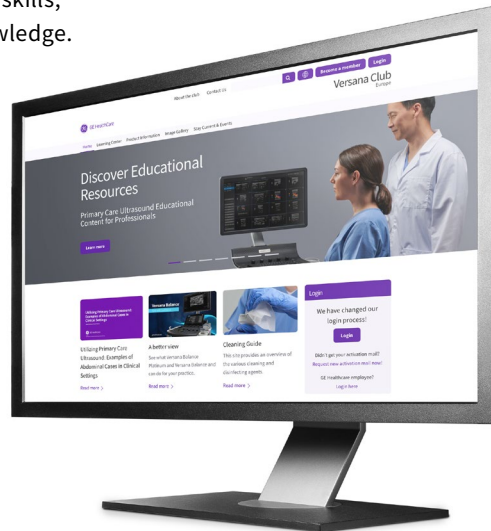
Advance your ultrasound skills with Versana Club

Versana Club offers resources to help you build your skills, network with others and share your ultrasound knowledge.

Membership perks include:

- Image-sharing with peers around the world
- Web-based video tutorials and other educational offerings
- Information on Versana service solutions and products
- Articles on ultrasound and patient care

Register now at www.versanaclub.net



- **E8C-RS** – micro convex endocavity probe for penetration and resolution
- **E8Cs-RS** – micro convex endocavity probe with wide field of view
- **3Sc-RS** – phased array sector probe for penetration with abdominal and cardiac imaging
- **6S-RS** – wide band sector array probe for resolution with pediatric cardiac imaging
- **RAB2-6-RS** – curved array 3D/4D probe for resolution with OB imaging
- **8C-RS** – micro convex probe for detailed pediatrics and neonatal imaging

*Available on Versana Balance V2.

Products mentioned in the material may be subject to government regulations and may not be available in all countries. Shipment and effective sale can only occur after approval from the regulator. Please check with local GE HealthCare representative for details.

© 2024 GE HealthCare.

Versana Balance, LOGIQ and CrossXBeam are trademarks of GE HealthCare. LI-RADS, TI-RADS and BI-RADS are trademarks of American College of Radiology. GE is a trademark of General Electric Company used under trademark license.

September 2024 JB30848XX

