



# Versana Premier™

Care with Confidence










# INTRODUCING Versana Premier

The Versana Premier ultrasound system can help you deliver high-quality urological care, patient after patient, day after busy day.

A wide variety of probes and clinical features specifically for urology let you provide quick and comfortable exams, see clearly, diagnose a broad range of conditions, and perform precise biopsies.

**POWERFUL. VERSATILE. PRODUCTIVE.**  
*World-class ultrasound designed for peace of mind.*

-  World-class imaging
-  Urology-specific probes
-  Smart clinical features
-  Intelligent automated productivity tools
-  Clinical and product education\*
-  Expert service and technical support
-  Flexible financing options
-  Access to a network of Versana users

## Versana Premier

is part of the Versana ultrasound family: complete solutions that help empower care without compromise, balancing capability, affordability, and reliability.

\* Local educational offerings and financing options may vary according to regions.  
Please check with your local GE Healthcare representative.





# A partner you can trust

Take your urology practice to new levels of excellence



## Comprehensive service and support for peace of mind

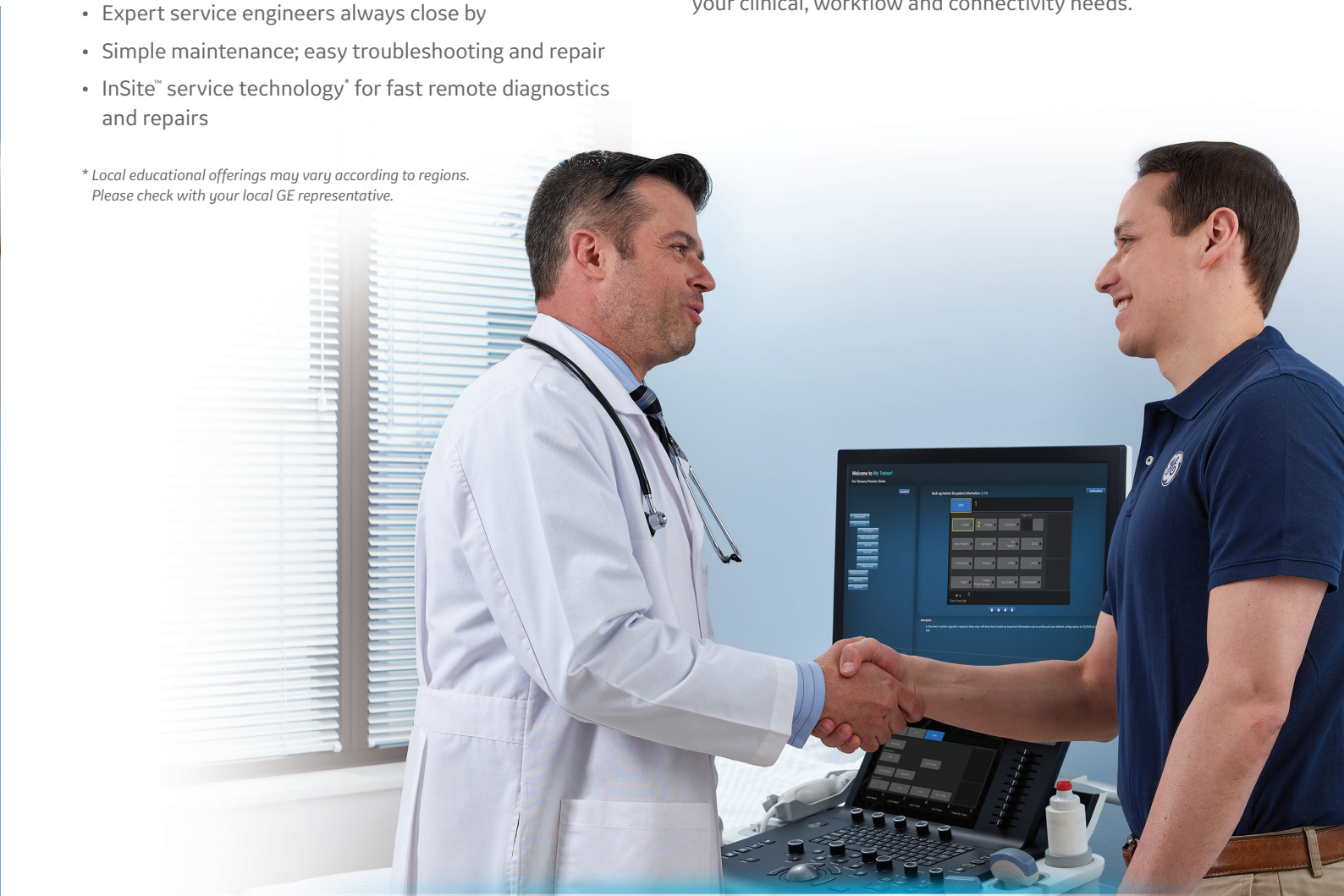
GE delivers flexible, worry-free, multi-year coverage. It's your assurance of long life, high uptime, maximum patient volume, and strong return on investment.

- Expert service engineers always close by
- Simple maintenance; easy troubleshooting and repair
- InSite™ service technology\* for fast remote diagnostics and repairs

\* Local educational offerings may vary according to regions. Please check with your local GE representative.

## Decades of GE Healthcare heritage at your service

Invest in Versana Premier and benefit from vast GE ultrasound expertise. It's designed with you, your practice, and your patients in mind to meet your clinical, workflow and connectivity needs.

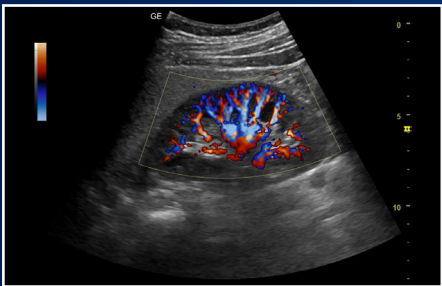


## World-class imaging technology

Versana Premier delivers outstanding imaging power and clarity to boost diagnostic confidence. It helps you see clearly, differentiate between tissues, and delineate structure boundaries. You'll enjoy proven functionalities found on most advanced GE systems.



CrossXBeam™ and SRI-HD to define structure borders clearly.



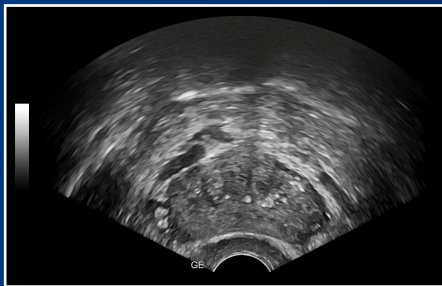
Sensitive color Doppler to visualize blood flow.



Linear imaging to analyze tissue presentation and analyze blood flow.



Transperineal imaging for non-vascular access procedures.



Curved imaging for volume studies.



Evaluations for prostate including bi-plane imaging.



# A complete solution

Advanced urology capability, clinical education, and financing to fit your budget

## Versatile system, simple to use

Multiple exam protocols and urology applications help you diagnose a wide spectrum of patient conditions. Intuitive automated tools streamline workflow.



**Whizz** dynamic image tuning continuously optimizes the image as you scan, even as you move from one organ or area to another



Compare current and prior exams side-by-side with the **Follow-Up Tool**



Make automatic volumetric measurements with **AutoBladder**



Use **TruScan** to review and analyze images after exams at your convenience



Use a **convex probe** for high-quality kidney exam



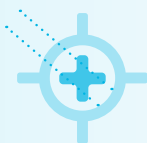
**Network options** use the cloud<sup>1</sup> to share images with other clinicians or patients<sup>2</sup>



Customize automated protocols with **Scan Assistant**



See in **biplane views** using a transrectal probe for transperineal procedures



Perform precise biopsies with **biopsy guides** and **Needle Recognition**

## Flexible financing choices to enhance return on investment

Financing plans<sup>3</sup> including monthly payments help you meet your financial goals and grow your practice.

## ERGONOMIC FEATURES FOR CLINICIAN AND PATIENT COMFORT<sup>†</sup>



## Sharpen your skills and stay ahead of the curve

- My Trainer: on-board help with system care, setup and operation
- Web-based product and clinical tutorials
- Local face-to-face training and remote application support\*

<sup>†</sup> Optional features which may vary from country to country.

\* Local educational offerings and financing options may vary according to regions. Please check with your local GE Healthcare representative.





# An opportunity for growth

*Ultrasound to serve you well today and set your course for the future*

## Experience the strength of the GE Healthcare family

Your support team is fully trained & GE Healthcare qualified, deeply experienced, and close by.

- Expert support during and after purchase
- In-depth product instruction
- Remote or on-site technical, clinical and network support

## Customized solutions and path to growth

Help your practice grow with Versana Premier. You can select a basic package, with the option to add more probes and software. Or let GE experts help select another system to suit your needs.

## Versana Club: Learn. Network. Share.

The Versana Club gives you access to member resources that can help expand your ultrasound knowledge and improve your practice. It's a place to share images with your peers from around the world.

### You'll also enjoy:

- Educational offerings
- Web-based video tutorials
- Information on Versana family service solutions and products
- Up-to-date content on ultrasound and patient care
- Notices of regional ultrasound events and other news



## VERSANA PREMIER: CARE WITH CONFIDENCE

*Powerful. Versatile. Productive. World-class ultrasound designed for peace of mind.*

Products mentioned in this material may be subject to government regulation and may not be available in all countries. Please check with your local Sales Representative. Shipment and the effective sale in certain countries can only occur if the product is approved. Final product configuration and features may differ from the ones represented here and may not be available in every country. Check with your local GE Healthcare representative for details.

1. Requires internet connection; may not be available in all countries.
2. Image sharing to mobile devices via Bluetooth available in some countries.
3. Financing options vary from country to country. Please check with your local GE representative.

© 2020 General Electric Company – All rights reserved.

GE Healthcare reserves the right to make changes in specifications and features shown herein, or discontinue the product described at any time without notice or obligation. Contact your GE Healthcare representative for the most current information. GE, the GE Monogram, Versana Premier, InSite and CrossXBeam are trademarks of General Electric Company. GE Healthcare, a division of General Electric Company. GE Medical Systems, Inc., doing business as GE Healthcare.

November 2020  
JB00253XU

