



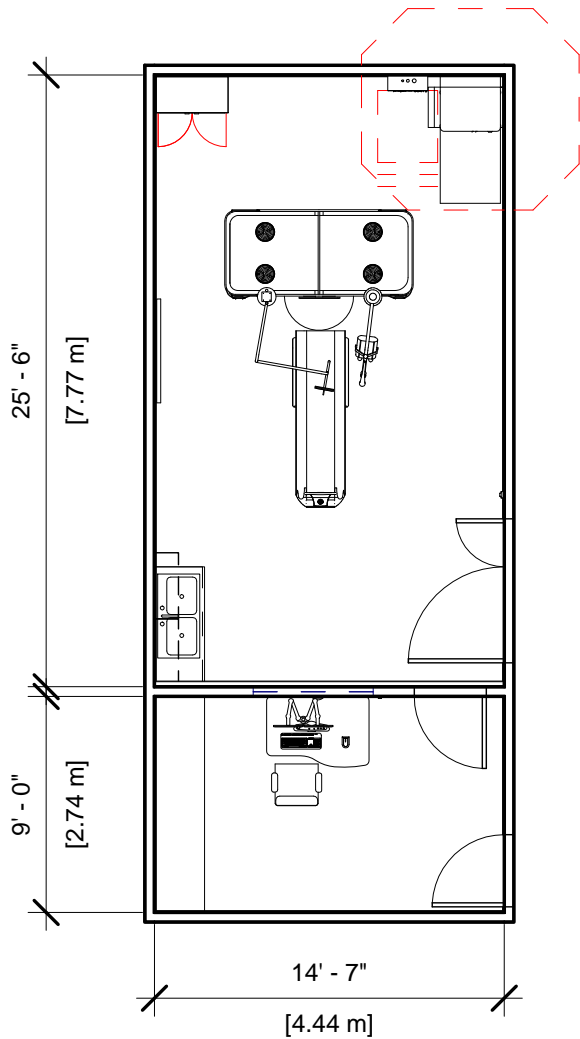
**GE Healthcare
Project Management**

GE Healthcare has made reasonable efforts to ensure this BIM file conforms to requirements of the applicable pre-installation manual. This BIM file was produced to assist with site planning and is not intended for construction or final building modeling. GE Healthcare is not responsible for any damages resulting from use of such file for construction or final building modeling purposes. Compliance with all applicable local, state, and federal laws and regulations is the responsibility of the customer or its designated architects and engineers. Please keep in mind the information in this BIM file is dynamic and is subject to change without notice. It is the responsibility of the customer or its designated architect(s) and engineer(s) to ensure they have the latest equipment or product information.

REVOLUTION FRONTIER w/1700 TABLE

Project number	--
Date	19-MARCH-2018
Drawn by	GENPACT
Checked by	

A-1
Scale 12" = 1'-0"



Specialty Equipment Schedule

Description	Weight (lbs)	BTU
CONTROL ROOM		
OPTIMA DESK	341	3201
EXAM ROOM		
MAIN DISCONNECT	125	0
STORAGE CABINET	99	0
CT TABLE	1047	0
REVOLUTION CT (FRONTIER)	3884	33297
MONITOR ON OVERHEAD COUNTERPOISED SUSPENSION	61	300
INJECTOR HEAD ON OVERHEAD COUNTERPOISED SUSPENSION	79	0
POWER DISTRIBUTION UNIT	300	700



**GE Healthcare
Project Management**

GE Healthcare has made reasonable efforts to ensure this BIM file conforms to requirements of the applicable pre-installation manual. This BIM file was produced to assist with site planning and is not intended for construction or final building modeling. GE Healthcare is not responsible for any damages resulting from use of such file for construction or final building modeling purposes. Compliance with all applicable local, state, and federal laws and regulations is the responsibility of the customer or its designated architects and engineers. Please keep in mind the information in this BIM file is dynamic and is subject to change without notice. It is the responsibility of the customer or its designated architect(s) and engineer(s) to ensure they have the latest equipment or product information.

REVOLUTION FRONTIER w/1700 TABLE

Project number	--
Date	19-MARCH-2018
Drawn by	GENPACT
Checked by	

A-2

Scale 1/8" = 1'-0"

Hold the Left Click for Rotating around
Use the Scroll for Zooming in and out



Revolution Frontier w/1700 Table



[Click for Site Planning Support](#)