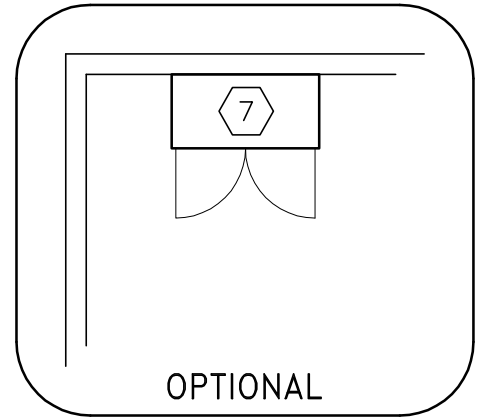
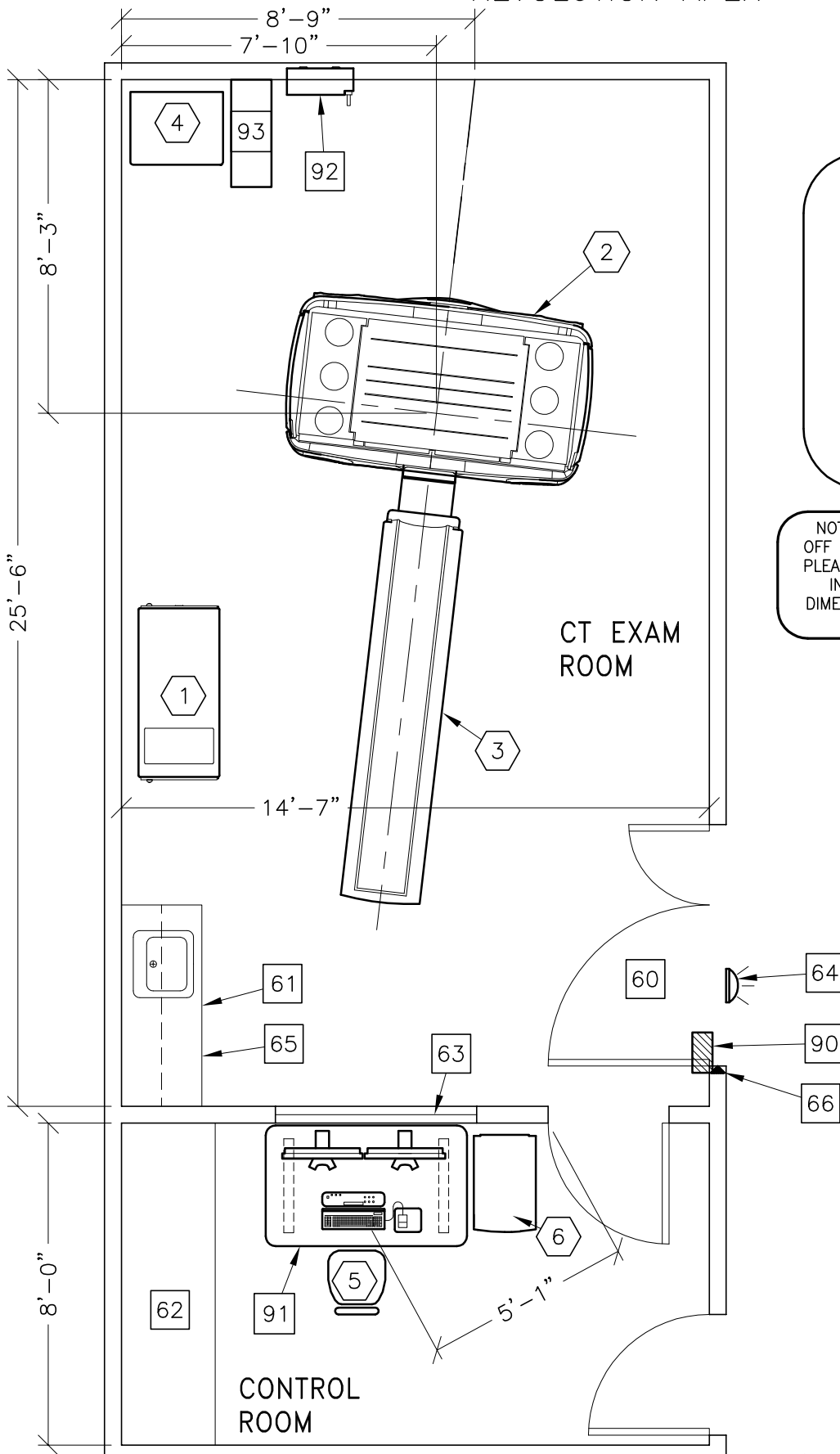


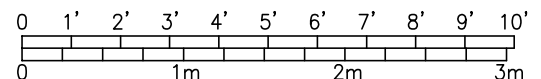


REVOLUTION APEX



NOTE: THIS IS A SUGGESTED LAYOUT BASED OFF OF GE HEALTHCARE PRE-INSTALL MANUAL. PLEASE CONTACT LOCAL PROJECT MANAGER OF INSTALLATION IF YOUR ROOM LAYOUT OR DIMENSIONS ARE DIFFERENT THAN THE LAYOUT SHOWN.

ROOM DIMENSIONS	LENGTH & WIDTH	CEILING HEIGHT
TYPICAL:	20'-8" x 13'-2" [6.30M x 4.00M]	9'-0" [2.74M]



ROOM PLAN LOCATED ON PAGE 6-120

ITEM	QUANTITY	ITEM DESCRIPTION	WEIGHT	HEAT OUTPUT
1	1	SYSTEM IV CABINET	706 lbs	7899 btu
2	1	REVOLUTION APEX GANTRY (INCLUDES TABLE BTU'S)	6170 lbs	27150 btu
3	1	PATIENT TABLE WITH EXTENDED TABLE TOP W/ 500 LB PATIENT	1949 lbs	
4	1	POWER DISTRIBUTION UNIT	795 lbs	1201 btu
5	1	OPERATOR'S CHAIR		
6	1	CONSOLE CABINET & LCD MONITORS	216 lbs	5102 btu
7	1	STORAGE CABINET (EMPTY CABINET WEIGHT)	99 lbs	
***** CUSTOMER/CONTRACTOR SUPPLIED AND INSTALLED ITEMS *****				
60		MINIMUM DOOR OPENING FOR EQUIPMENT DELIVERY IS 46 IN. W x 78 IN. H [1168.4mm x 1980mm], CONTINGENT ON A 96 IN. [2438.4mm] CORRIDOR WIDTH		
61		COUNTER TOP WITH SINK, BASE AND WALL CABINETS		
62		COUNTER TOP FOR EQUIPMENT-MINIMUM DEPTH 30 in. OR ADDITIONAL SHELVING MAY BE REQUIRED PROVIDE GROMMETED OPENINGS AS REQUIRED TO ROUTE INTERCONNECT CABLES TO RACEWAY BELOW COUNTERTOP.		
63		LEAD GLASS WINDOW		
64		X-RAY ON WARNING LIGHT - AVAILABLE FROM GE SUPPLY CALL: 800-200-9760 GE CAT. NO. WXIABWW-OF-XIU		
65		CASEWORK REQUIRED WITH A MINIMUM OF 16 CUBIC FEET TO STORE ALL SERVICE MATERIALS		
66		DOOR LIMIT SWITCH (REQUIRED IN SOUTH CAROLINA, OTHERWISE NEEDED ONLY IF REQUIRED BY STATE/LOCAL CODES)		
90		X-RAY ROOM WARNING LIGHT CONTROL PANEL REFERENCE JUNCTION POINT 'WLC' ON SHEET 'E1' FOR DETAILED DESCRIPTION -E4502RL FOR WARNING LIGHT CONTROL ONLY		
91		REVOLUTION MANUAL ADJUSTABLE TABLE AVAILABLE FROM GEHC, CALL 800-279-7925 OR LOCAL GE PROJECT MANAGER OF INSTALLATION CAT. NO. B7918AY		
92		MAIN DISCONNECT CONTROL		
93		UPS SYSTEM		

ENVIRONMENT

Ambient Operation Temperature: 64-79° (F) 18-26° C
 Allowable Temperature Change: 5° F [3° C] per hour
 Humidity: 30-60 percent non condensing
 Allowable Humidity Change: 5 percent per hour
 Max - Altitude: 7875 [2400M] ft. above sea level