



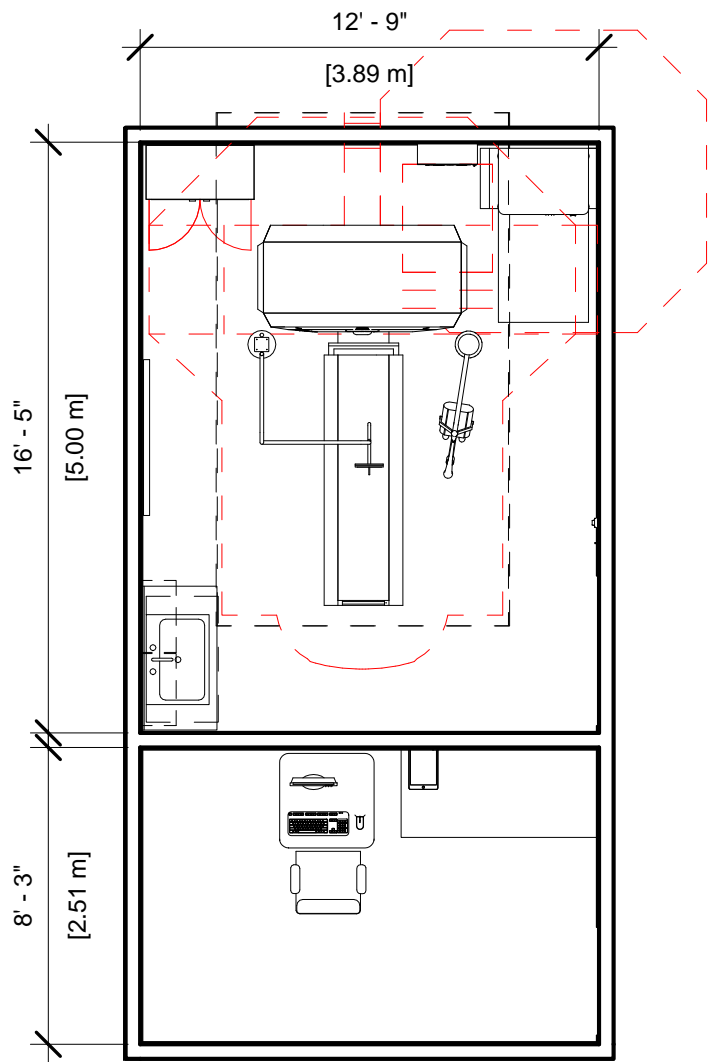
**GE Healthcare
Project Management**

GE Healthcare has made reasonable efforts to ensure this BIM file conforms to requirements of the applicable pre-installation manual. This BIM file was produced to assist with site planning and is not intended for construction or final building modeling. GE Healthcare is not responsible for any damages resulting from use of such file for construction or final building modeling purposes. Compliance with all applicable local, state, and federal laws and regulations is the responsibility of the customer or its designated architects and engineers. Please keep in mind the information in this BIM file is dynamic and is subject to change without notice. It is the responsibility of the customer or its designated architect(s) and engineer(s) to ensure they have the latest equipment or product information.

Revolution ACTs 8 Slice - RENDERING

Project number	6-108
Date	15.Sep.17
Drawn by	GENPACT
Checked by	

A-1
Scale 12" = 1'-0"



Specialty Equipment Schedule		
Description	Weight (lbs)	BTU
CONTROL ROOM		
NARROW OPERATORS CONSOLE	301	2866
EXAM ROOM		
POWER DISTRIBUTION UNIT	300	700
MAIN DISCONNECT CONTROL	90	0
INJECTOR HEAD ON OVERHEAD COUNTERPOISED SUSPENSION	79	0
MONITOR ON OVERHEADCOUNTERPOISED SUSPENSION	61	300
STORAGE CABINET	99	0
Revolution ACTs 8 Slice gantry	830	15524
PATIENT TABLE	150	700



GE Healthcare
Project Management

GE Healthcare has made reasonable efforts to ensure this BIM file conforms to requirements of the applicable pre-installation manual. This BIM file was produced to assist with site planning and is not intended for construction or final building modeling. GE Healthcare is not responsible for any damages resulting from use of such file for construction or final building modeling purposes. Compliance with all applicable local, state, and federal laws and regulations is the responsibility of the customer or its designated architects and engineers. Please keep in mind the information in this BIM file is dynamic and is subject to change without notice. It is the responsibility of the customer or its designated architect(s) and engineer(s) to ensure they have the latest equipment or product information.

Revolution ACTs 8 Slice - FLOOR PLAN & SCHEDULE

Project number	6-108
Date	15.Sep.17
Drawn by	GENPACT
Checked by	

A-2
Scale 3/16" = 1'-0"

Hold the Left Click for Rotating around
Use the Scroll for Zooming in and out



6-108-Revolution ACTs 8 Slice



GE Healthcare

[Click for Site Planning Support](#)