



**GE Healthcare  
Project Management**

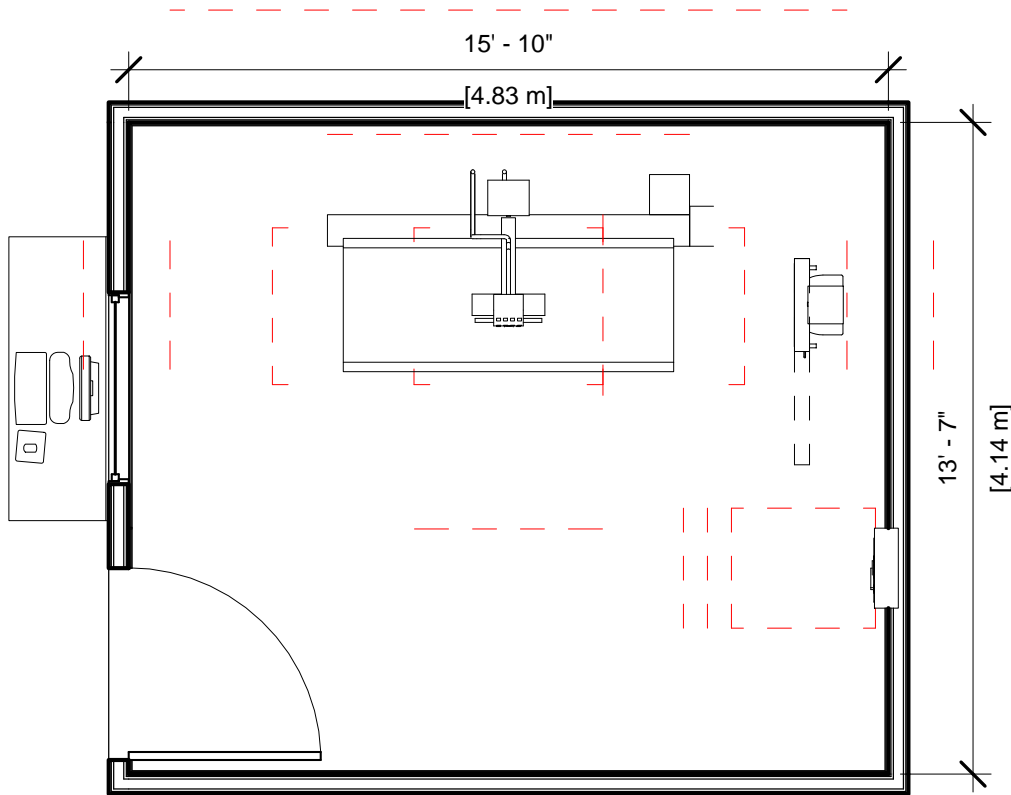
GE Healthcare has made reasonable efforts to ensure this BIM file conforms to requirements of the applicable pre-installation manual. This BIM file was produced to assist with site planning and is not intended for construction or final building modeling. GE Healthcare is not responsible for any damages resulting from use of such file for construction or final building modeling purposes. Compliance with all applicable local, state, and federal laws and regulations is the responsibility of the customer or its designated architects and engineers. Please keep in mind the information in this BIM file is dynamic and is subject to change without notice. It is the responsibility of the customer or its designated architect(s) and engineer(s) to ensure they have the latest equipment or product information.

**BRIVO XR385 - RENDERING**

<b>Project number</b>	1-146
<b>Date</b>	06.JUNE.2017
<b>Drawn by</b>	GENPACT
<b>Checked by</b>	

**A-1**

**Scale 12" = 1'-0"**



Specialty Equipment Schedule		
Description	Weight (lbs)	BTU
BRIVO XR385 CONTROL CONSOLE	52	426
Exam Room		
MAIN DISCONNECT, REFERENCE JUNCTION POINT 'A' ON SHEET E1 FOR DETAILED DESCRIPTION. CAT. NO. E4502ST OR WITH AUTO RESTART E4502RP. (20 W x 48 H x 6.68 in. D)	0	0
BRIVO XR385 TABLE	1393	5119
BRIVO XR385 WALLSTAND	407	109



**GE Healthcare  
Project Management**

GE Healthcare has made reasonable efforts to ensure this BIM file conforms to requirements of the applicable pre-installation manual. This BIM file was produced to assist with site planning and is not intended for construction or final building modeling. GE Healthcare is not responsible for any damages resulting from use of such file for construction or final building modeling purposes. Compliance with all applicable local, state, and federal laws and regulations is the responsibility of the customer or its designated architects and engineers. Please keep in mind the information in this BIM file is dynamic and is subject to change without notice. It is the responsibility of the customer or its designated architect(s) and engineer(s) to ensure they have the latest equipment or product information.

**BRIVO XR385 - PLAN & SCHEDULE**

Project number	1-146
Date	06.JUNE.2017
Drawn by	GENPACT
Checked by	

**A-2**

Scale 1/4" = 1'-0"

Hold the Left Click for Rotating around  
Use the Scroll for Zooming in and out



1-146 - Brivo XR385 DR-F



GE Healthcare

[Click for Site Planning Support](#)