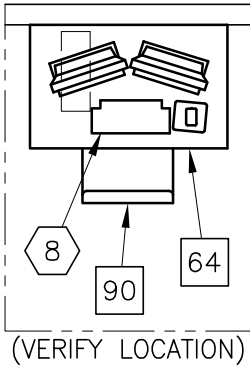




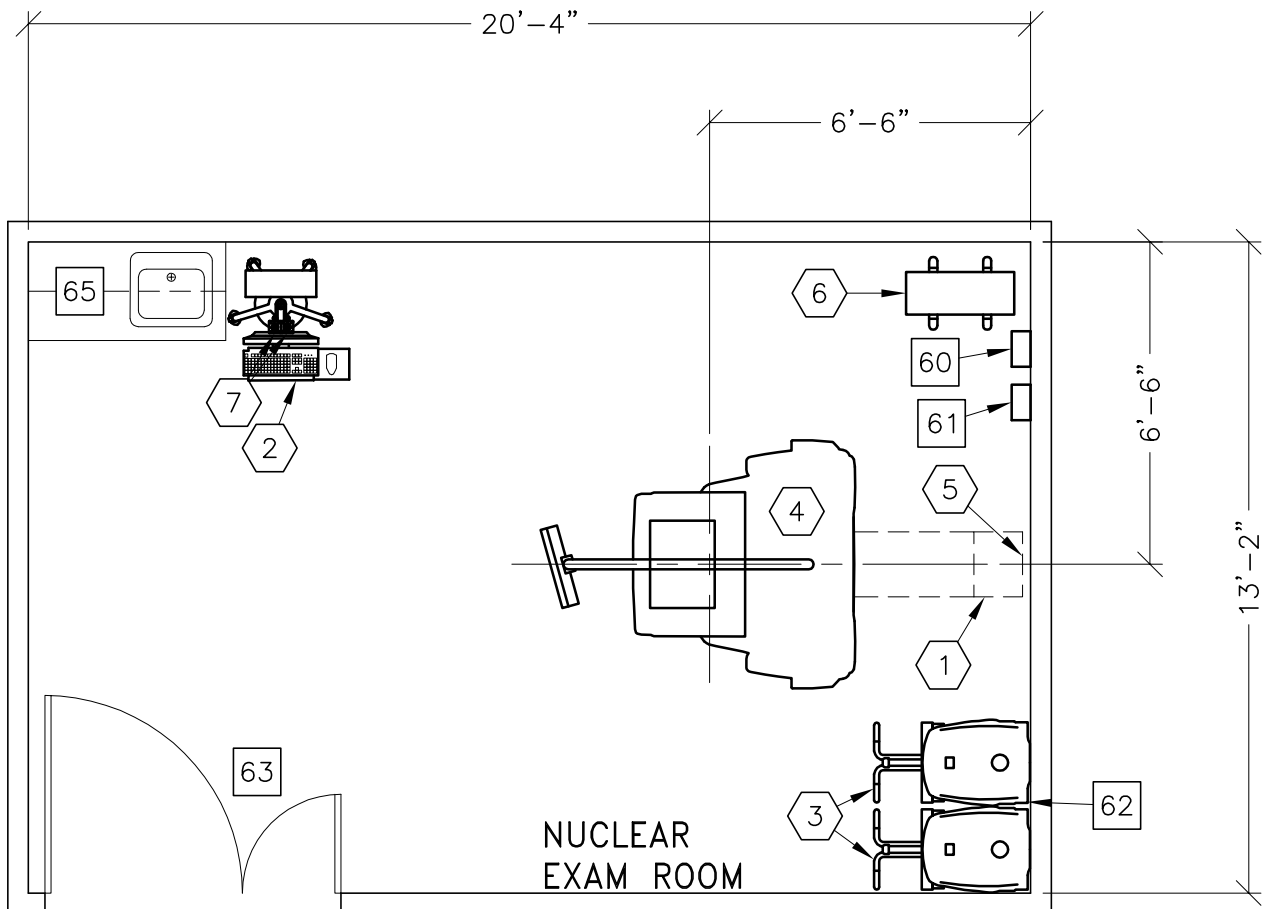
**IMPORTANT CUSTOMER READINESS ALERT:**

THIS EQUIPMENT INVOLVES THE USE OF RADIOACTIVE ISOTOPES, INCLUDING THOSE SOURCES NECESSARY FOR EQUIPMENT CALIBRATION. APPROPRIATE REGULATORY COMPLIANCE AND LICENSING MUST BE ARRANGED BY THE CUSTOMER EARLY IN THE PLANNING PROCESS AND THEN DEMONSTRATED/AVAILABLE FOR EQUIPMENT INSTALLATION.

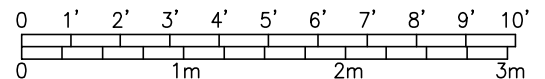


ASSIGNED BY THE HOSPITAL NET ADMIN IF CONNECTING TO THE HOSPITAL LAN	HOSTNAME	IP	AE TITLE	DICOM PORT
ACQUISITION HOST				
PROCESSING HOST				
HARDCOPY HOST				
LAN NET MASK				
GATEWAY TO OTHER NETWORKS				
OTHER				
HUB OR SWITCH				

- PREPARE ADEQUATE NETWORK SOCKETS IN THE PROPER LOCATIONS TO SUPPORT ALL ACQUISITION, LOCAL AND REMOTE WORKSTATION.
- IT DEPARTMENT MUST ASSIGN DEDICATED IP ADDRESSES (NOT DHCP) NOTE THE ADDRESSES BELOW FOR THE ACQUISITION, LOCAL AND REMOTE WORKSTATIONS.
- PREPARE BROADBAND CONNECTIVITY LINE AND DEDICATED IP ADDRESSES FOR INSITE CONNECTIVITY.
- REFER TO TABLE ON A1 PAGE



ROOM DIMENSIONS	LENGTH & WIDTH	CEILING HEIGHT
MINIMUM:	Refer to Pre-Installation Manual	



ROOM PLAN LOCATED ON PAGE 7-90

ITEM	QUANTITY			
ITEM		ITEM DESCRIPTION	WEIGHT	HEAT OUTPUT
①	1	TABLE EXTENDER		
②	1	OPERATORS CONSOLE ON CART	44 lbs	255 btu
③	2	BRIVO NM 615 COLLIMATOR CART	728 lbs	
④	1	BRIVO NM 615 GANTRY	3516 lbs	3412 btu
⑤	1	LIMIT OF TABLE TRAVEL		
⑥	1	11 KVA UPS CABINET	211 lbs	3034 btu
⑦	2	EMO PUSHBUTTON		
⑧	1	XELERIS WORKSTATION	55 lbs	255 btu
<p>*****  <b>CUSTOMER/CONTRACTOR SUPPLIED AND INSTALLED ITEMS</b>                      *****</p>				
60		MAIN DISCONNECT CONTROL		
61		MAIN DISCONNECT CONTROL, GEXPRO CAT. NO. GEXNM630LV40A65KF, 14 lbs.		
62		OPTIONAL WALL PROTECTION FROM COLLIMATOR CART. ALSO, FINISHED FLOORING COULD BE SUBJECT TO DAMAGE DURING MOVEMENT AND BEING PARKED FOR A LONG PERIOD. SUFFICIENT FLOORING MUST BE USED TO PREVENT DAMAGE.		
63		MINIMUM DOOR OPENING FOR EQUIPMENT DELIVERY IS 55.1 IN. W x 86.8 IN. H [1399mm x 2204mm], CONTINGENT ON A 96 IN. [2438mm] CORRIDOR WIDTH		
64		TABLE		
65		COUNTER TOP WITH SINK, BASE AND WALL CABINETS		
90		OPERATORS CHAIR		

ENVIRONMENT

Ambient Operation Temperature: 64-79° F [18-26° C]  
 Allowable Temperature Change: 5° F [3° C] per hour  
 Humidity: 30-60 percent non condensing  
 Allowable Humidity Change: 5 percent per hour  
 Max - Altitude: 7875 FT. [2400 M]