

Vscan Air™

Focused ultrasound assessments on-the-go



You and your interdisciplinary team work everyday to effectively evaluate and manage complex cases. Your unit runs on an everyday commitment from a team that places safety, collaboration, and patient outcomes first. GE HealthCare works to help keep your unit running smoothly with innovative solutions that help you manage dynamic patient needs. Point of care ultrasound provides on-the-spot insights into your patients' current conditions.

Get to know how Vscan Air SL (sector/linear) and Vscan Air CL (curved/linear) can elevate patient care.



Flexibility with 2-in-1 power

The Vscan Air dual-probe design gives you the power of two transducers in a single device. Offering both deep and shallow scanning capabilities to enable immediate and efficient whole-body scanning that is always with you as you move from patient to patient.

High-quality images for confidence

Our proprietary SignalMax™ + XDclear™ technology sets a new standard in handheld ultrasound. The Vscan Air SL combines the power of SignalMax high-intensity signal processing with industry-leading, single crystal transducer technology for exceptional penetration, resolution, and sensitivity. For anytime ultrasound* without compromising on image quality.

Insights in your pocket

Vscan Air offers an ultra-portable, pocket-sized design to help you get answers, whenever you need them. Accelerate diagnoses and treatment decisions that support your dynamic patient needs. No need to go looking for ultrasound – it's in your pocket.



M-Mode



Pulsed Wave Doppler



Annotations



Durability



One-swipe/tap controls



Color Doppler

AI powered features:



Auto Bladder Volume**



Caption AI™: Caption Guidance™ and Caption Interpretation™ AutoEF[†]

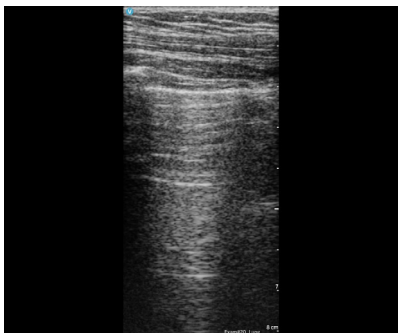
**Only available on Vscan Air CL.

AI feature not available on Vscan Air SL; bladder measurements only.

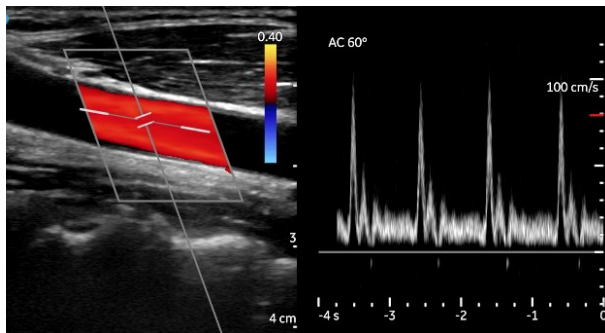
[†]Only available on Vscan Air SL.



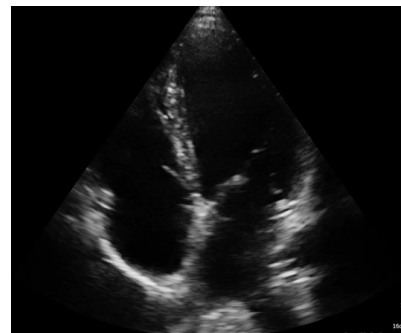
Residents with limited training in cardiac ultrasound were able to identify LVSD in patients with superior accuracy, and confirm findings of an **average of 22 hours before availability of formal echocardiography results[‡]**



Lungs – A lines



Common carotid artery with color and PW Doppler



Apical 4 chamber view

Make Vscan Air the newest member of your team-based approach to patient care

Why wait for answers?

Inpatient rounding

While assessing your patients, use your Vscan Air SL for focused cardiopulmonary and thoracic assessments, volume status and fluid responsiveness, and more. When your interdisciplinary team needs answers or for on-the-spot educational opportunities with residents and fellows, Vscan Air can help you see now to get to immediate bedside answers.

Consults, admissions, and discharges

Timely assessments of patients to make important decisions for admissions and discharges is key to the efficiency of your unit. With Vscan Air in your pocket, you can take ultrasound with you to get your patients to the next steps faster.

Assessments in hand

Vscan Air could help you to be more efficient in your assessments.

- Volume status and fluid responsiveness (VExUS protocol)
- Cardiopulmonary assessment
- Bedside procedures like fluid drainage
- Monitor position of chest tubes and catheters
- Evaluate for deep vein thrombosis
- RUQ pain evaluation
- Peripheral and central line placement
- Foley catheter and bladder check

Procedures

Use Vscan Air to aid your bedside procedures like peripheral and central line placement with the ease of wireless and cordless ultrasound. Procedures like chest tube placements, thoracentesis, and paracentesis can be performed with real-time visualization without the contamination risk from an ultrasound cord.



Vscan Air SL
(sector/linear)

Vscan Air CL
(curved/linear)

See more.
Treat faster.

* The device has been verified for limited use outside of professional healthcare facilities. Use is restricted to environmental properties described in the user manual.

1. Razi & Spencer, University of Chicago, Chicago, Illinois – USA; Bedside Hand-Carried Ultrasound by Internal Medicine Residents Versus Traditional Clinical Assessment for the Identification of Systolic Dysfunction in Patients.

Intended for healthcare professionals only.

Products mentioned in the material may be subject to government regulations and may not be available in all countries. Shipment and effective sale can only occur after approval from the regulator. Please check with local GE HealthCare representative for details.

© 2025 GE HealthCare. Vscan Air, SignalMax, XDClear, Caption AI, Caption Guidance, and Caption Interpretation are trademarks of GE HealthCare. GE is a trademark of General Electric Company used under trademark license.

June 2025 JB26840XX



GE HealthCare