

Versana Active

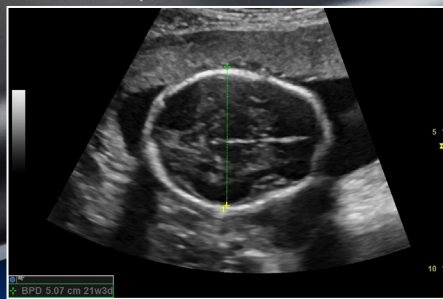
Portable ultrasound for OB/GYN



Versana Active™ delivers the imaging capability of a console in a hand-carried, lightweight system – bringing the agility of a laptop unit with the capability of attaching to a cart.



Sensitive color Doppler to assess blood flow.



Productivity tools to help automate your workflow and save time.



CrossXBeam™ and SRI-HD define borders clearly.

Durability for demanding usage day after day

Clinical and product **education***

Flexible financing options*

Expert service and technical support

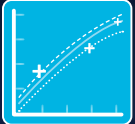
Access to Versana Club – a network of Versana users and tutorials

5-year warranty for peace of mind**

CAPABLE, ADAPTABLE SYSTEM FOR OB/GYN



Record **fetal growth** monitoring and structure descriptions



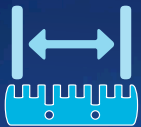
Use **Fetus Growth Trend** to compare current and prior exams and track fetal development



Create custom OB/GYN exam protocols and standardized workflow with **Scan Assistant**



Use **Whizz** dynamic image tuning to scan while the system seamlessly optimizes image quality



Automate and standardize fetal measurements with **SonoBiometry**



Easily add **voice comments** to exams



Upload **images and reports** to the cloud for consultation or sharing with patients



Use **Scan Coach** 3D animation, anatomic illustrations and reference images to find the correct scan plane



Easily compare current and prior images with the **Follow-Up Tool**



Use **templates** to create custom reports – including adding measurements and images



* Local educational offerings and financing options may vary according to regions. Please check with your local GE Healthcare representative.

** Warranty offering may vary by country or region. Please check with your GE Healthcare Representative.

© 2020 General Electric Company – All rights reserved.

GE Healthcare reserves the right to make changes in specifications and features shown herein, or discontinue the product described at any time without notice or obligation. Contact your GE Healthcare representative for the most current information. GE, the GE Monogram, Versana Active and CrossXBeam are trademarks of General Electric Company. GE Healthcare, a division of General Electric Company. GE Medical Systems, Inc., doing business as GE Healthcare.

January 2020
JB73739US