



PORTABLE ULTRASOUND FOR GENERAL PRACTICE

Versana Active™

Care with Confidence



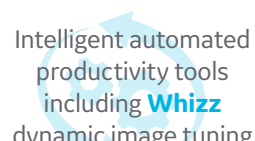
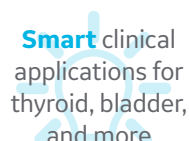
gehealthcare.com

INTRODUCING Versana Active

Versana Active™ ultrasound system delivers the imaging capability of a console in a hand-carried, lightweight package that enables you to take your system to your patients, on premises or remote facilities. This reliable system brings the agility of a laptop unit with the capability for attaching to a cart, while being small enough to fit into tight spaces. Adaptable to cover a broad range of everyday general exams, it is easy to carry to clinics and physician offices.

This high-quality yet affordable unit comes from the GE Healthcare legacy of ultrasound imaging excellence. It combines design, workflow and features developed to meet users' demanding requirements.

ADVANCED. CAPABLE. ADAPTABLE.
World-class ultrasound designed for peace of mind.





Clinical and product
education*

Flexible
financing options*

Expert service and
technical support

Access to a network
of Versana users
and tutorials with
Versana Club

Versana Active
is part of the Versana
ultrasound family:
complete solutions
that help empower care
without compromise,
balancing capability,
affordability, and
reliability.

A partner you can trust

Count on GE Healthcare for equipment and support to help you reach new levels of excellence

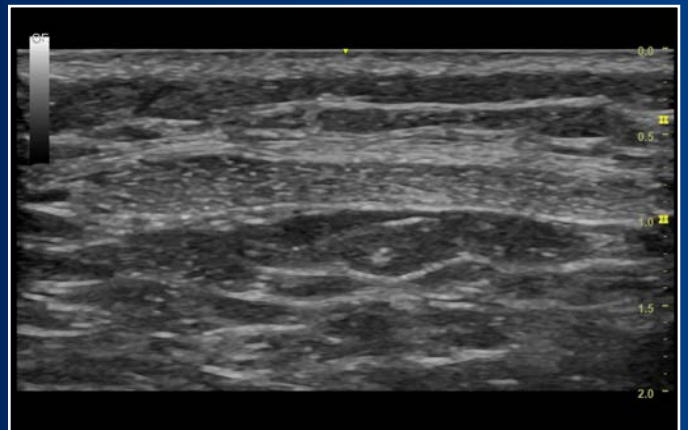


Advanced capability in a compact system

The image quality on Versana Active ranks with the best in its class. High spatial and contrast resolution help you clearly visualize anatomical structures and physiological function, and make confident decisions at the point of care.

Whizz one-touch dynamic image constantly optimizes image quality as you scan, even as you move from one organ or region to another.

By migrating technology from across the ultrasound portfolio, you get advanced capabilities from our higher-end consoles in a world-class yet affordable compact.



Clear 2D imaging for musculoskeletal – knee & patella

Dependable service and support for peace of mind

GE Healthcare delivers flexible, multi-year coverage to ensure long life, high uptime, efficient patient throughput, strong return on investment.

- Expert service engineers to provide support
- Simple maintenance, troubleshooting and repair
- InSite™ service technology for fast remote diagnostics and streamlined clinical applications support
- Five-year standard warranty

Decades of GE Healthcare heritage at your service

Versana Active is built on years of GE Healthcare ultrasound expertise. It's designed with you, your practice, and your patients in mind to meet your clinical, workflow and connectivity needs.



CrossXBeam™ and SRI-HD to define structure borders clearly of the gall bladder.



Sensitive color Doppler to examine thyroid vasculature and blood flow in vessels.

A complete solution

Advanced applications, educational support, attractive financing

Capable, adaptable system for comprehensive scanning

The light, portable Versana Active makes exams comfortable for you and your patient. Easily scan at the bedside or in tight workspaces. Perform abdominal, OB/GYN, cardiac, MSK and vascular exams, and more – plus needle-guidance procedures. This highly adaptable system lets you add a cart to create a full-featured console system and suit your practice needs. Fast boot-up lets you place the system in standby, then instantly scan the next patient who needs imaging. Advanced clinical applications and automated tools simplify exams, streamline workflow, and enable fast, high-volume scanning.



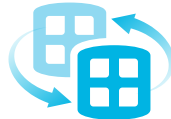
Use a **Thyroid Productivity Tool** for structure characterization and TI-RADS assessment



Create custom exam protocols and standardized workflow with **Scan Assistant**



Use **Scan Coach** 3D animation, anatomic illustrations and reference images to find the correct scan plane



Use the **Follow-Up Tool** to easily compare current and prior images



Measure intima-media thickness with **Auto-IMT**



Use **templates** to create custom reports to suit global or regional standards



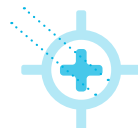
Automate and standardize fetal measurements with **SonoBiometry**



Easily add **voice comments** to exams



Use **Auto Bladder** to easily calculate volumes, including residual urine volume



Perform accurate biopsies by viewing the precise location of the needle with **Needle Recognition**



Upload images and reports to the cloud for consultation or sharing with patients

Flexible financing to enhance return on investment

For clinicians on a budget, Versana Active is an ideal and affordable solution. The Versana Active offering is customizable to meet your budget, plus offers financing plans including monthly payments to help you meet financial goals and grow your practice.

CHECK OUT THESE CONVENIENT FEATURES

Convenient
carrying handle



Light (5 kg/11 lb) and **slim** (57 mm/2.3 in)

High
durability



Wide range of probe
offerings



Cart option to suit
scanning preferences

Sharpen your skills and stay ahead of the curve

- Training and ultrasound education solutions including product and clinical tutorials
- My Trainer on-board help with system care, setup and operation
- Local face-to-face training and remote application support

Cloud access requires internet connection. Financing options and educational offerings vary from country to country. Please check with your local GE Healthcare representative.





An opportunity for growth

Versana ultrasound systems to serve you well today and set your course for the future.

Experience the strength of the GE Healthcare family

Your support team is fully trained, GE Healthcare qualified, deeply experienced, and nearby.

- Expert support during and after purchase
- In-depth staff product training
- Remote or on-site technical, clinical and network support

Customized solutions and path to growth

Versana Active can scale to suit your general practice today and grow with you. Select a basic system and software. Then choose from optional Versana upgrades, or other specialized GE Healthcare products as your practice advances.

Versana Club: Learn. Network. Share.

The Versana Club community offers resources to help you expand your ultrasound knowledge and improve your practice.

- Educational offerings
- Web-based video tutorials
- Information on Versana family service solutions and products
- Up-to-date content on ultrasound and patient care
- Notices of regional ultrasound events and other news
- Access to the broader family of GE Healthcare ultrasound user clubs

Register now at www.versanaclub.net.



VERSANA ACTIVE: CARE WITH CONFIDENCE

Advanced. Capable. Adaptable. World-class ultrasound designed for peace of mind.

Products mentioned in this material may be subject to government regulation and may not be available in all countries. Please check with your local Sales Representative. Shipment and the effective sale in certain countries can only occur if the product is approved. Final product configuration and features may differ from the ones represented here and may not be available in every country. Check with your local GE Healthcare representative for details.

Imagination at work

© 2019 General Electric Company – All rights reserved.

GE Healthcare reserves the right to make changes in specifications and features shown herein, or discontinue the product described at any time without notice or obligation. Contact your GE Healthcare representative for the most current information. GE, the GE Monogram, Versana Active, InSite and CrossXBeam are trademarks of General Electric Company. GE Healthcare, a division of General Electric Company. GE Medical Systems, Inc., doing business as GE Healthcare.

December 2019
JB74144US

