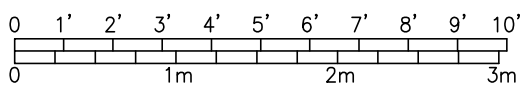
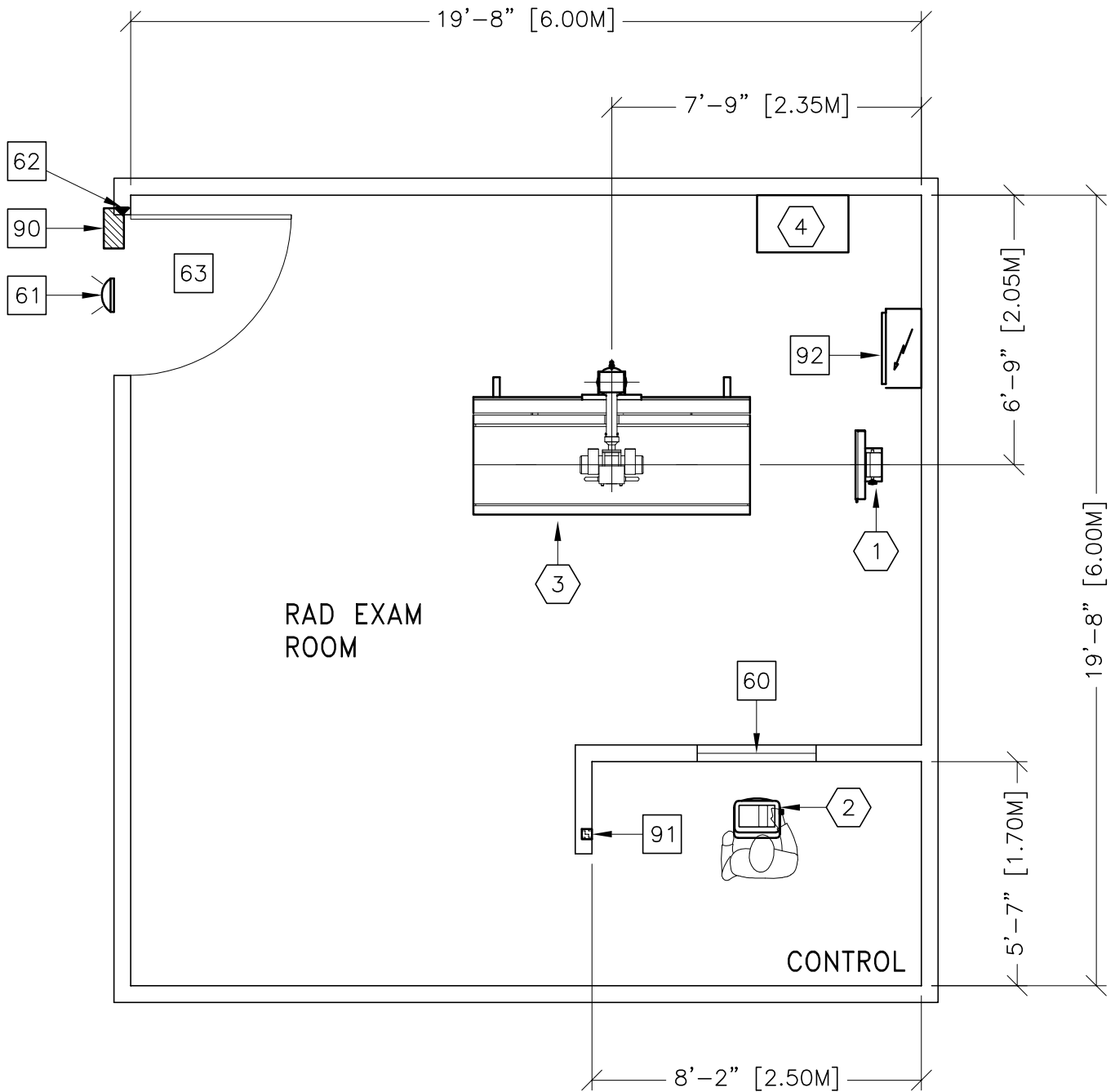




XR6000 STARLIGHT



ROOM DIMENSIONS	LENGTH & WIDTH	CEILING HEIGHT
MINIMUM:	20'-6" x 16'-0" [6.25m x 4.88m]	2500mm [8'-2.5"]

ROOM PLAN LOCATED ON PAGE 1-172

ITEM	QUANTITY	ITEM DESCRIPTION	WEIGHT	HEAT OUTPUT
①	1	STANDARD WALL STAND	107 kg	
②	1	OPERATORS CONSOLE ON PEDESTAL	11 kg 22 lbs	6 W 20 btu
③	1	STANDARD INTEGRATED TABLE WITH TUBESTAND	355 kg 783 lbs	580 W 1979 btu
④	1	POWER DISTRIBUTION UNIT	122 kg 269 lbs	145 W 495 btu
<p>***** CUSTOMER/CONTRACTOR SUPPLIED AND INSTALLED ITEMS *****</p>				
⑥0		CONTROL WALL TO CEILING WITH LEAD GLASS VIEWING WINDOW.		
⑥1		X-RAY ON WARNING LIGHT - AVAILABLE FROM GE SUPPLY CALL: 800-200-9760 GE CAT. NO. WXIABWW-0F-XIU		
⑥2		DOOR LIMIT SWITCH <NEEDED ONLY IF REQUIRED BY STATE/LOCAL CODES>		
⑥3		MINIMUM DOOR OPENING FOR EQUIPMENT DELIVERY IS 1000MM W X 2250MM H CONTINGENT ON A 2500MM CORRIDOR WIDTH		
⑨0		X-RAY ROOM WARNING LIGHT CONTROL PANEL REFERENCE JUNCTION POINT 'XRLC' ON SHEET 'E1' FOR DETAILED DESCRIPTION -E4502RL FOR WARNING LIGHT CONTROL ONLY.		
⑨1		EMERGENCY OFF SWITCH <NEEDED ONLY IF REQUIRED BY STATE/LOCAL CODES>		
⑨2		MAIN DISCONNECT, REFERENCE JUNCTION POINT 'A' ON SHEET E1. <16" W x 24" H x 6" D> [400MM W x 600MM H x 150MM D]		

ENVIRONMENT

Ambient Operation Temperature:	10-40° <C> / 50-104° <F>
Allowable Temperature Change:	<10° <C> / 18° <F> per hour
Humidity:	30-75 percent non condensing
Allowable Humidity Change:	-
Max - Altitude:	3000M <MIN: -100M> 9842' <MIN -328'>