



# CRITIKON™ Blood Pressure Cuff Adapters and Connectors

## Total solutions for non-invasive blood pressure

GE Healthcare's connection system is simple and easy to implement.

GE Healthcare provides cost-effective standardization and inventory management solutions. By standardizing blood pressure (BP) connection systems, you create a universal connection to allow the same type of BP cuff connection to work on a wide variety of non-invasive blood pressure devices. By consolidating all of your BP cuff purchases to one vendor, your Purchasing Department will have fewer purchase orders and invoices. And a single point of contact for BP cuffs is created, providing you with a dedicated implementation team.

Products included in this catalog are not made with natural rubber latex.



# BP Cuff Adapters

## Connecting BP Cuff to DINACLICK™ and Neo-Snap™ Connectors



**Y, 1 Male Bayonet to DINACLICK™ Female Recept**  
Compatibility: Philips/HP, Siemens, Datascope, Colin  
**Part # 2059291-001 (Qty: 10)**



**Y, 1 Female Submin to DINACLICK Female Recept**  
Compatibility: Protocol  
**Part # 2059291-002 (Qty: 10)**



**Y, T Male Submin to DINACLICK Female Recept**  
Compatibility: Nihon Kohden  
**Part # 2059291-003 (Qty: 10)**



**Y, 1 Unfitted to DINACLICK Female Recept**  
Compatibility: Unfitted  
**Part # 2059291-004 (Qty: 10)**



**X, 2 Male Bayonet to DINACLICK Female Recept**  
Compatibility: User Modified  
**Part # 2059292-001 (Qty: 10)**



**X, 2 Female Submin to DINACLICK Female Recept**  
Compatibility: GE Marquette  
**Part # 2059292-002 (Qty: 10)**



**X, 2 Mated Submin to DINACLICK Female Recept**  
Compatibility: GE Datex-Ohmeda  
**Part # 2059292-003 (Qty: 10)**



**X, 2 Male Screw to DINACLICK Female Recept**  
Compatibility: DINAMAP  
**Part # 2059292-004 (Qty: 10)**



**Y, 1 Male Slip Luer to Neo-Snap Male Plug**  
Compatibility: Philips/HP, Siemens, Datascope, Spacelabs  
**Part # 2059290-001 (Qty: 10)**



**Male Micro Plug to 2 Neo-Snap Male Plug**  
Compatibility: Spacelabs  
**Part # 2059290-002 (Qty: 10)**



**Y, 1 Male Barb 1/8" to Neo-Snap Male Plug**  
Compatibility: Philips, Welch Allyn  
**Part # 2059290-003 (Qty: 10)**



**Y, 1 Male Barb 3/32" to Neo-Snap Male Plug**  
Compatibility: Philips  
**Part # 2059290-004 (Qty: 10)**



**Male Micro Plug to 1 Neo-Snap Male Plug**  
Compatibility: Spacelabs  
**Part # 2059297-001 (Qty: 10)**

# BP Cuff Adapters

## Connecting BP Cuff to Luer



**Y, 1 Male Slip Luer to  
2 Female Slip Luers-Neonatal**  
Compatibility: Philips/HP, Siemens,  
Datascope, Spacelabs  
**Part # 330049 (Qty: 1)**



**1 Male Micro Plug to  
1 Female Locking Luer-Neonatal**  
Compatibility: Spacelabs  
**Part # 330088 (Qty: 10)**



**Y, 1 Male Micro Plug to 2 Female  
Locking Luers-Neonatal**  
Compatibility: Spacelabs  
**Part # 330078 (Qty: 10)**

## Connecting BP Cuff to 2 Female Screw Connectors



**Y, 1 Male Bayonet to  
2 Female Screw Connectors**  
Compatibility: Philips/HP, Siemens,  
Datascope, Colin  
**Part # 330046 (Qty: 1)**



**Y, 1 Unfitted to  
2 Female Screw Connectors**  
Compatibility: Unfitted  
**Part # 330048 (Qty: 1)**

## Connecting BP Cuff to 2 Unfitted



**Y, 1 Unfitted to 2 Unfitted**  
Compatibility: Unfitted  
**Part # 300829 (Qty: 1)**

## Connecting BP Cuff to 2 Male Submins



**Y, 1 Unfitted to 2 Male Submins**  
Compatibility: Unfitted  
**Part # 330084 (Qty: 10)**

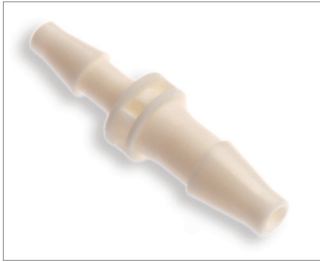


**Y, 1 Male Bayonet to 2 Male  
Submins**  
Compatibility: Philips/HP, Siemens,  
Datascope, Spacelabs  
**Part # 330080 (Qty: 10)**



**X, Mated Pair Submins to  
2 Male Submins**  
Compatibility: GE Datex-Ohmeda  
**Part # 330085 (Qty: 10)**

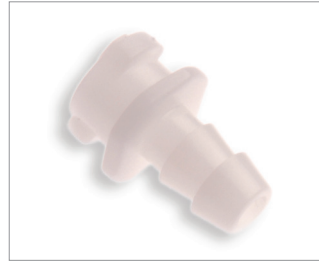
## BP Cuff Connectors



**5/32" ID Barbed to  
1/8" ID Barbed, Plastic**  
Compatibility: Airhose Connector  
**Part # 300671 (Qty: 10)**



**5/32" ID Barbed  
to 5/32" ID Barbed, Plastic**  
Compatibility: Airhose Connector  
**Part # 300670 (Qty: 10)**



**Female Submin to  
5/32" ID Barbed, Plastic**  
Compatibility: GE, GE Marquette,  
GE Datex-Ohmeda  
**Part # 330092 (Qty: 10)**



**Male Screw to  
5/32" ID Barbed, Plastic**  
Compatibility: GE DINAMAP  
**Part # 300664 (Qty: 10)**



**5/32" ID Barbed to  
Female Bayonet, Metal**  
Compatibility: Philips/HP, Siemens,  
Datascope, Colin  
**Part # 330060 (Qty: 10)**



**Male Bayonet to  
3/16" ID Barbed, Metal**  
Compatibility: Philips/HP, Siemens,  
Datascope, Colin  
**Part # 330059 (Qty: 10)**



**2T DINACLICK Female Recept to  
1/8" ID tubing, dual lumen hoses**  
Compatibility: DINACLICK Male Plug  
**Part # 2059294-001 (Qty: 10)**



**1T DINALICK Female Recept for  
single lumen hoses**  
Compatibility: DINACLICK Male Plug  
**Part # 2055630-001 1/8" tube  
(Qty: 10)**



**1T DINACLICK Female Recept for  
single lumen hoses**  
Compatibility: DINACLICK Male Plug  
**Part # 2055630-002 5/32" tube  
(Qty: 10)**



**5/32" ID Barbed to Female Slip  
Luer** Compatibility: Universal  
Neonatal  
**Part # 330068 (Qty: 10)**



**2T Neo-Snap Male Plug**  
Compatibility: Neo-Snap Female  
**Part # 2059293-001 (Qty: 10)**

## BP Cuff Connectors



**Male Submin to  
1/8" ID Barbed, Plastic**  
Compatibility: GE, GE Marquette,  
GE Datex-Ohmeda  
**Part # 330091 (Qty: 10)**



**Male Submin to  
5/32" ID Barbed, Plastic**  
Compatibility: GE, GE Marquette,  
GE Datex-Ohmeda  
**Part # 330090 (Qty: 10)**



**Mated Pair Submin to  
1/8" ID Barbed, Plastic**  
Compatibility: GE Datex-Ohmeda  
**Part # 330058 (Qty: 10)**



**Female Submin to  
1/8" ID Barbed, Plastic**  
Compatibility: GE,  
GE Marquette, Protocol  
**Part # 330064 (Qty: 10)**



**1/8" ID Barbed to  
Female Screw, Metal**  
Compatibility: GE DINAMAP  
**Part # 300619 (Qty: 2)**

## Wash Plugs and O-Rings

**GE Healthcare provides wash plugs that block water from entering the BP cuff during cleaning.**



**Washing Plugs for  
Submin Connector Cuffs**  
Compatibility: GE,  
GE Marquette, Protocol  
**Part # 330072 (Qty: 50)**



**Washing Plugs for  
Screw Connector Cuffs**  
Compatibility: GE DINAMAP  
**Part # 300877 (Qty: 50)**



**O-Ring Replacement Set for  
Air Hose Instrument Connector**  
Compatibility: (330073) and Air  
Hoses (107365, 107368, 107366)  
**Part # 330077 (Qty: 20)**



**Washing Plugs for Neo-Snap  
Female Recept and DINACLICK  
Male Plug**  
Compatibility: GE  
**Part # 2059295-001 (Qty: 50)**

To learn more about GE Healthcare's comprehensive cuff solutions, visit us at [cuffs.gehealthcare.com](https://cuffs.gehealthcare.com)

© 2020 General Electric Company – All rights reserved.

GE Healthcare reserves the right to make changes in specifications and features shown herein, or discontinue the product described at any time without notice or obligation. Contact your GE Healthcare representative for the most current information. GE, the GE Monogram, CRITIKON, and DINAClick are trademarks of General Electric Company. GE Healthcare, a division of General Electric Company. GE Medical Systems, Inc., doing business as GE Healthcare. Colin is a registered trademark of Colin Medical Instruments. Datascope is a registered trademark of Datascope Corp. HP is a registered trademark of Agilent Technologies. Nihon Kohden is a registered trademark of Royal Philips Electronics. Protocol is a registered trademark of Welch Allyn, Inc. Siemens is a registered trademark of Siemens Medical Solutions. Spacelabs is a registered trademark of Spacelabs Medical Systems.

JB01134XX 10/20

