



LOGIQ P5

Transducer guide

Leading edge innovation is our design promise.

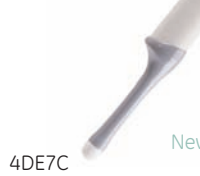
GE Healthcare offers ultrasound transducers for a broad variety of applications – empowering you to easily make the most of the breakthrough technology available on your LOGIQ® P5 ultrasound system.

Every design decision is made with patient and user comfort in mind, to reduce stress without compromising diagnostic performance. When we introduce an advanced transducer feature, we incorporate it across the product line – so you always scan state-of-the-art images. Our family of transducers delivers outstanding imaging capability with lightweight, ergonomic benefits; and unique broadband technology provides deep penetration and excellent resolution without the need to change transducers during the exam.

Choose from the following transducers to meet your clinical needs.



Convex



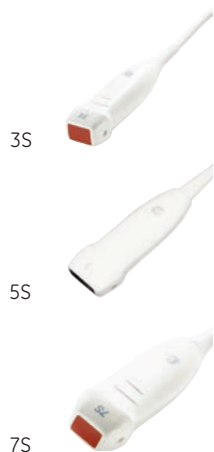
	Applications	Footprint	Bandwidth	FOV	Biopsy Guide
	Abdomen, OB/GYN, Urology, Vascular	60 x 18 mm	1.4 - 4.8 MHz	55°	Single angle, reusable
	Abdomen, OB/GYN, Urology, Vascular	48 x 11 mm	2 - 5 MHz	68°	Single angle, reusable
	Abdomen, OB/GYN	53.2 x 40.6 mm	2 - 5 MHz	80°(B) 85° x 80° (volume)	Single angle, reusable
	Abdomen, OB/GYN, Urology, Vascular	60 x 18 mm	2 - 6 MHz	55°	Multi angle, reusable
	Pediatric, Neonatal	26 x 5 mm	4 - 11 MHz	133°	n/a
	OB/GYN, Urology	26 x 5 mm	4 - 11 MHz	133°	Single angle, reusable, disposable
	OB/GYN, Urology	34 x 35 mm	4 - 11 MHz	133°	Single angle, reusable, disposable

Linear



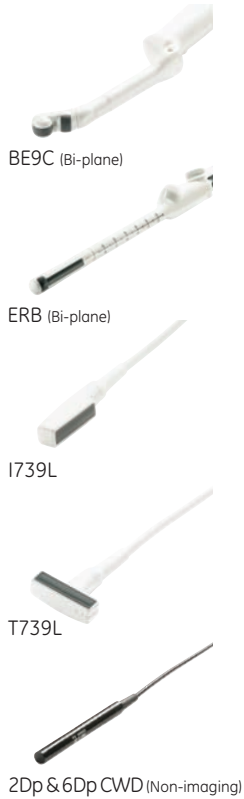
Applications	Footprint	Bandwidth	FOV	Biopsy Guide
Vascular, Small Parts, Neonatal, Pediatrics	40 x 9 mm	3.5 - 10.5 MHz	39 x 160 mm	Multi angle, reusable
Vascular, Small Parts, Neonatal, Pediatrics	44 x 6 mm	2.7 - 7.8 MHz	39 x 160 mm	Multi angle, reusable
Vascular, Small Parts, Neonatal, Pediatrics	39 x 5 mm	3.5 - 9.5 MHz	39 mm	Multi angle, reusable
Vascular, Small Parts, Neonatal, Pediatrics	39 x 5 mm	4.5 - 12 MHz	39 mm	Multi angle reusable
Vascular, Small Parts, Neonatal, Pediatrics	45 x 10 mm	5 - 12 MHz	39 mm	Single angle, reusable

Phased array



Applications	Footprint	Bandwidth	FOV	Biopsy Guide
Cardiac, Transcranial, Abdomen	18.5 x 18.5 mm	1.5 - 3.5 MHz	90°	Multi angle, reusable
Cardiac, Transcranial, Abdomen	14.4 x 11 mm	2.2 - 5.3 MHz	90°	Multi angle, reusable
Neonatal, Pediatrics	9.3 x 7 mm	3 - 8 MHz	90°	n/a

Specialty



Applications	Footprint	Bandwidth	FOV	Biopsy Kit
Urology Transrectal	20 x 5 mm	4.0 - 11.0 MHz	127°	Single angle, reusable, disposable,
Urology Transrectal	Linear 51 x 5 mm Convex 17 x 5.5 mm	Linear 4.7 - 9.5 MHz Convex 4.5 - 8.8 MHz	Linear 51.2 mm Convex 122°	Brachytherapy grid, bridge guide biopsy
Intraoperative	39 x 5 mm	3.5 - 9.5 MHz	39 mm	n/a
Intraoperative	39 x 5 mm	3.5 - 9.5 MHz	39 mm	Multi angle, reusable
Cardiac	n/a	2 & 5 MHz	n/a	n/a

For more information contact your GE Sales Representative at 888-202-5528 or visit us at gehealthcare.com/ultrasound.

GE Healthcare
9900 Innovation Drive
Wauwatosa, WI 53226
U.S.A.

www.gehealthcare.com

Europe
GE Healthcare
Beethovenstr. 239
D - 42655 Solingen
T 49 212 2802 0
F 49 212 2802 28

Asia
GE Healthcare Clinical
Systems ASIA
1105-1108 Maxdo Center
8 XingYi Road, Shanghai
200336
T 86 21 5257 4640
F 86 21 5208 0582

©2008 General Electric Company - All rights reserved.

GE Medical Systems Ultrasound & Primary Care Diagnostics, LLC, a General Electric company, doing business as GE Healthcare.

General Electric Company reserves the right to make changes in specifications and features shown herein, or discontinue the product described at any time without notice or obligation. Contact your GE representative for the most current information.

GE, GE Monogram and LOGIQ are trademarks of General Electric Company.



imagination at work