

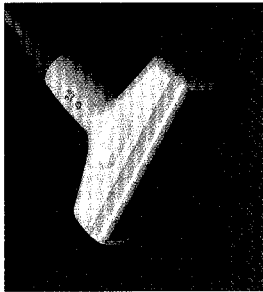


**GE Medical Systems**

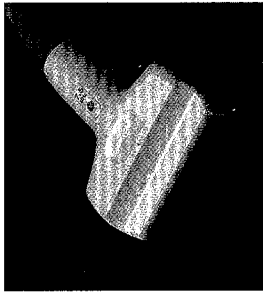
[gemedicalsystems.com](http://gemedicalsystems.com)

# LOGIQ 200 PRO/α200 SERIES TRANSDUCER GUIDE

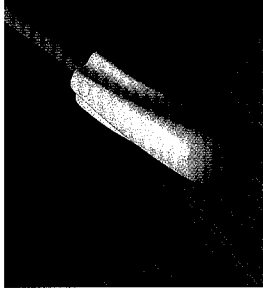
**H46022LB Linear LB**



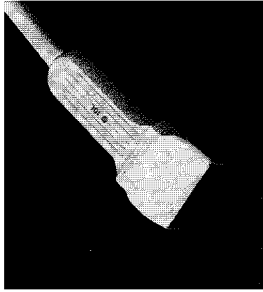
**H46022LH Linear LH**



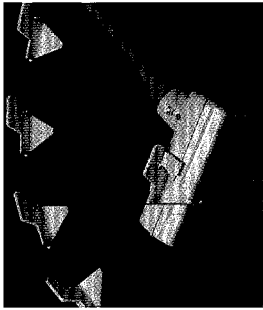
**H46022LI Linear LI**



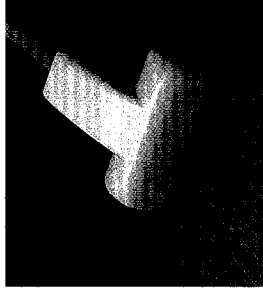
**H45202LM Linear 10L\***



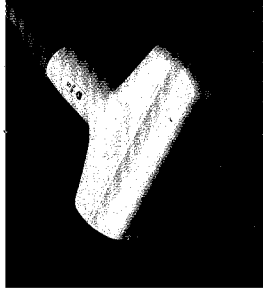
**H46022LD Linear LD**



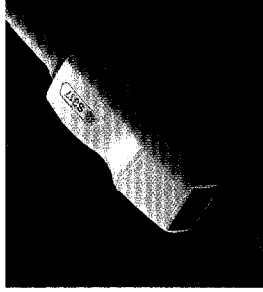
**H46022LT Linear LT**



**H46022LE Linear LE**



**H45202D Sector S317\***



Applications	Abdomen OB Gyn	Biopsy Abdomen	Small Parts Vascular	Intraoperative	Intraoperative	Abdomen OB Gyn, Urology	Small Parts Mammography	Cardiac Abdomen
B-Mode Transmit Frequency (MHz)	3.0, 3.5	3.0, 3.5	6.0, 7.5	6.0, 7.0	6.0, 7.0	6.0, 6.5	6.0, 7.0, 9.0	3.0, 3.5, 4.0
FOV	94 mm	94 mm	63 mm*	35 mm	35 mm	83 mm	40 mm	90 degrees
Foot Print (mm)	109 x 22	112 x 267	74 x 16	51 x 20	66 x 21	95 x 21	49 x 15	28 x 22
Biopsy Guide Available		Multi Angle, Reusable	Multi or Single Angle, Reusable				Multi Angle, Reusable	

\* = For LOGIQ 200 PRO Only

Not all probes available in all regions

© 2000 General Electric Company

Printed in USA

Rev 9/2000

00-6561

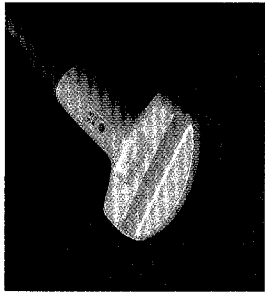


**GE Medical Systems**

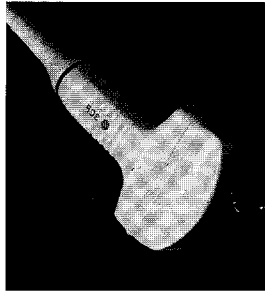
# LOGIQ 200 PRO/α200 SERIES TRANSDUCER GUIDE

gemedicalsystems.com

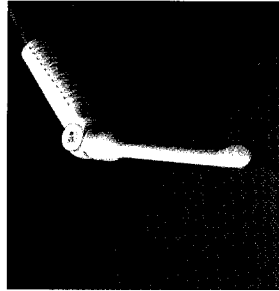
**H46022CB CBF**



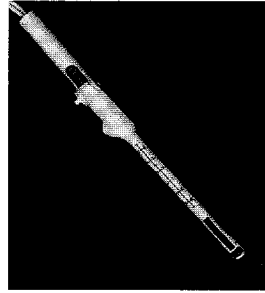
**H45202WB Convex C3b\***



**H46022MT Microconvex MTZ**



**H45202ER Convex/Linear ERB\***



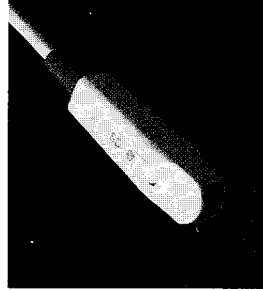
**H46022CA Convex CAE**



**H45202CZ Microconvex CZB**



**H45222CS Microconvex CS**



Applications	Abdomen OB Gyn, Urology	Abdomen OB Gyn, Urology	Abdomen Urology	Neonatal	OB Gyn Urology	Cardiac Abdomen	Endocavitary
B-Mode Transmit Frequency (MHz)	3.0, 3.5	4.0, 5.0, 6.0	3.5, 4.0, 4.5, 5.0	5.5, 6.5	5.5, 6.5	3.0-3.5	6.0, 7.0
FOV	72 degrees	72 degrees	59 degrees	124 degrees	119 degrees	82 degrees	120 degrees/50 mm
Foot Print (mm)	72 x 19	58 x 17	64 x 18	21 x 15	22 x 15	25 x 18	18 x 10 / 56 x 9
Biopsy Guide Available	Multi or Single Angle, Reusable	Multi or Single Angle, Reusable	Multi Angle, Reusable	Multi or Single Angle, Reusable	0° or 5° Single Angle, Reusable/Disposable	Single Angle, Reusable	Single Angle, Reusable

\* = For LOGIQ 200 PRO Only

Not all probes available in all regions

© 2000 General Electric Company

Printed in USA

Rev 9/2000 00-6561