

ViewPoint

Connect. Report. Relax.

GE Healthcare makes ultrasound workflow quicker and easier with ViewPoint. A truly comprehensive data management solution for OB/GYN practices, vascular labs and other diagnostic ultrasound users, ViewPoint combines the reporting and image archiving capabilities you need with the experience and support of the industry leader.

Connect.

Think of ViewPoint as the window to all your patient data, connecting you with the information you need, whenever and wherever you want it.

- Save time and ensure accuracy by transferring data directly from your ultrasound machine
- Save paper costs by storing images via DICOM
- Enhance your workflow by exchanging patient, exam and report data with EMR or HIS

Report.

With ViewPoint, you can quickly produce reports for both routine exams and complicated cases. Drawing on the experience of hundreds of clinicians, our innovative structured reporting technology speeds report creation while capturing all of your data for statistical analysis. You can even review and analyze volume data sets with our exclusive 4D View and LOGIQworks™ FX plug-ins

Relax.

At the end of the day, ViewPoint ensures you can relax with the knowledge that reports are complete and all of your records and images are securely stored and accessible. You will also enjoy the experience, service and support of a focused team within the world's leading ultrasound and IT company. Be confident in the future knowing GE's annual technology breakthrough strategy ensures you always have access to the latest innovations.



Split screen mode



Integrated 4D View Software



Ready to meet your needs

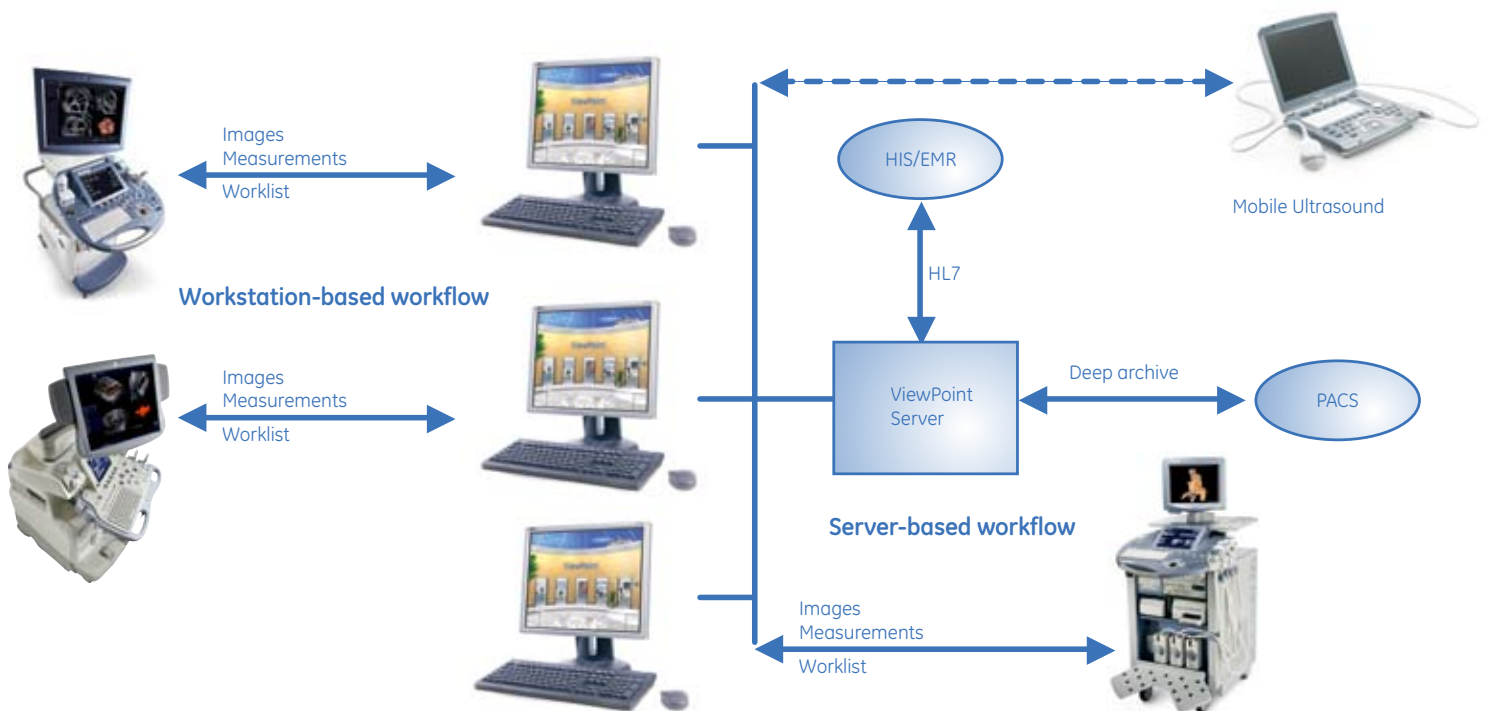
ViewPoint is a flexible and scalable solution, offering many options to meet your needs. Whatever your requirements, GE's experts can help you design a solution that matches your desired workflow.

Multiple options:

- One-click data transfer for measurements and images
- Compatibility with multi-vendor ultrasound machines
- Robust DICOM image archiving, including cine clips and volume image data
- DICOM Worklist
- Streamlined HL7 interfacing for HIS and EMR
- DICOM interface to PACS
- PDF and DICOM export of reports
- Integrated appointment scheduler
- Server- or workstation- based workflows
- Mobile ultrasound solutions
- Remote site connectivity

Key benefits include:

- Create quick and accurate reports
- Generate customizable structured reports
- Benefit from digital patient records
- Utilize flexible digital image storage
- Streamline accreditation with customizable data-mining
- Connect multiple ultrasound machines to one server
- Connect multiple sites to one network
- Exchange patient data with EMR, HIS/RIS and other IT systems
- Use advanced post-processing applications for volume review
- Enjoy flexible workflow and enhanced productivity by reading exams at a workstation
- Choose from multiple options for document management, including fax, PDF and DICOM formats
- Simultaneously review image and report data
- Fast image review via Study List



GE Healthcare
Wauwatosa, WI U.S.A.
877 644 3114
www.gehealthcare.com

© 2006 General Electric Company – All rights reserved.
GE Healthcare, a division of General Electric Company.

General Electric Company reserves the right to make changes in specifications and features shown herein, or discontinue the product described at any time without notice or obligation. Contact your GE representative for the most current information.

GE, GE Monogram, LOGIQ, LOGIQworks, Centricity, TruScan, CrossXBeam and Voluson are registered trademarks of General Electric Company.

