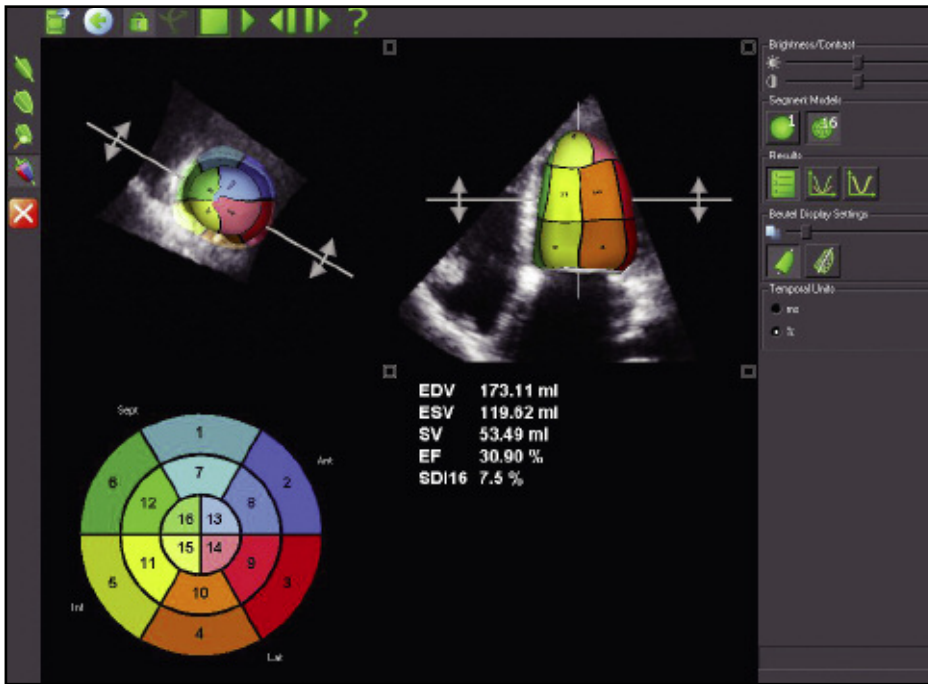


# 4D LV volume

Easy, fast and accurate assessments.



## Quantifying left ventricular volumes

Echocardiography is reaching new dimensions with real-time 4D imaging and quantification. Now EchoPac™ Dimension gives users the ability to quantify volume information, increasing their clinical confidence by providing clinically relevant information for routine patients.

Using the exceptional real-time full-volume image quality produced by Vivid™ 7 Dimension, the 4D LV volume tailored package from TomTec Imaging Systems can provide a full assessment of the left ventricle, free of geometric assumptions and shape, in less than a minute.

4D LV volume features advanced volume finding algorithms for an easy, fast, accurate and highly reproducible functional analysis of the left ventricle. These valuable clinical tools are available on both Vivid 7 Dimension and EchoPAC.

### 4D LV volume rendering

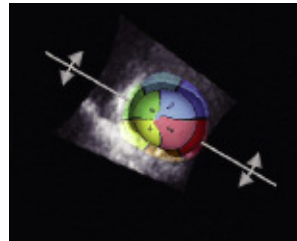
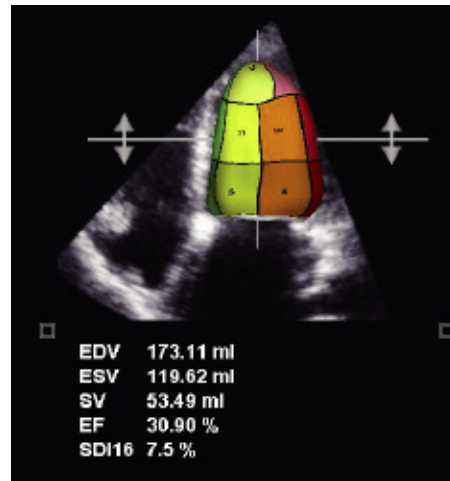
4D LV volume tracks the endocardial border of the ventricle in three dimensions, thus providing a model that represents the true geometry of the ventricle instead of relying on shape assumptions. Stroke Volume and Ejection Fraction are derived from those measurements with higher accuracy than 2D methods allow. Using a 16-segment model, a subdivision of the ventricle is performed for regional volumetric analysis. Not only can resting transthoracic information be analyzed, but stress echo datasets can be analyzed as well from the Vivid 7 Dimension.

### 4D LV volume analysis:

The following global and regional measurements are derived:

EDV	—	End Diastolic volume
ESV	—	End Systolic volume
SV	—	Stroke volume
EF	—	Ejection fraction

These values can be stored into the Vivid 7 Dimension and EchoPAC worksheet or report. The 4D LV volume analysis can be stored as part of the patient exam.



\*Reproducibility and accuracy of 3D Echo have been shown by Carly Jenkins et al. JACC, 2004, Vol. 44, No. 4, 878-886

Not all features may be available in your current software package. Please consult your sales representative to inquire about additional features for your Vivid 7 Dimension or your EchoPAC.

GE Healthcare  
9900 Innovation Drive  
Wauwatosa, WI 53226  
U.S.A.

[www.gehealthcare.com](http://www.gehealthcare.com)

©2007 General Electric Company – All rights reserved.

GE Medical Systems Ultrasound & Primary Care Diagnostics, LLC, a General Electric company, doing business as GE Healthcare.

General Electric Company reserves the right to make changes in specifications and features shown herein, or discontinue the product described at any time without notice or obligation. Contact your GE representative for the most current information.

GE, GE Monogram, Vivid and EchoPAC are trademarks of General Electric Company.



ULTC-0188-11.07-EN-US