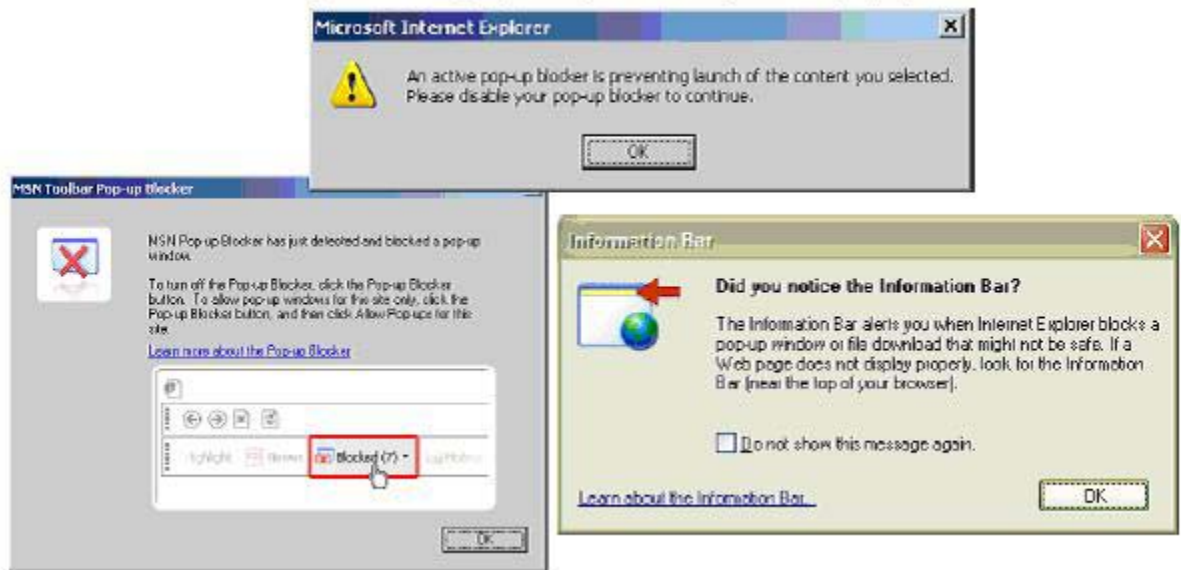


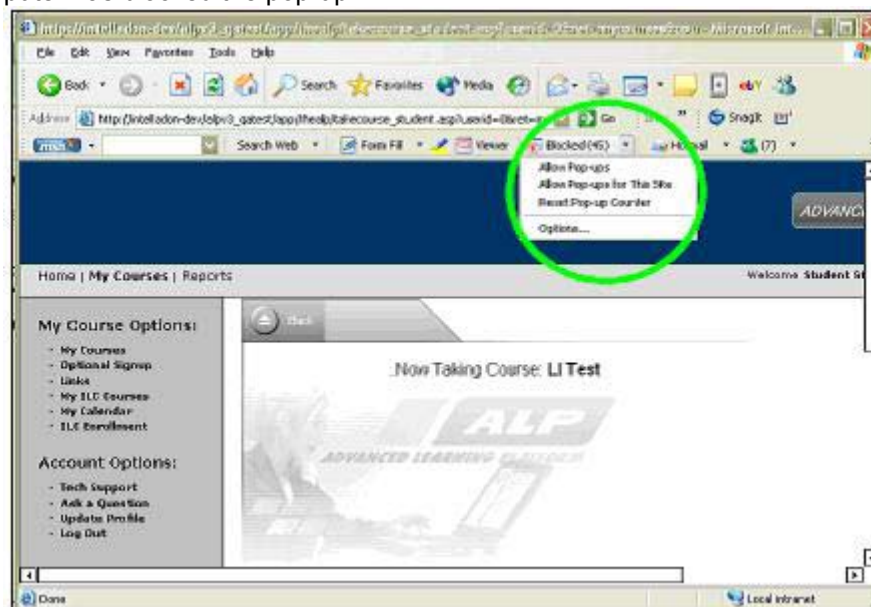
Pop-up Blockers

The courses launch in a pop-up window. If you are running any type of a pop-up blocker program, please disable it before attempting to use the program.

Below are some samples of messages you may encounter if you have a pop-up blocker:



Note: If after launching a module the program stops at the following screen, you will know your computer has blocked the pop-up.



Workaround for Pop-up Blockers

If you don't want to disable the pop-up blocker during your site visit, you can use the workaround method. The workaround is to hold down the "Ctrl" key on your keyboard every time you select a

button in the website for use. This will allow a pop-up window to be displayed with each click, but you have to hold down your Ctrl key each time you click.

How to Turn Off Pop-Up Blockers

Since there are a number of options and software packages that provide this feature to turn off pop-ups, we cannot provide instructions on all of them. The following information explains how to turn off popup blockers in Internet Explorer.

If you are using Internet Explorer as your Internet browser, follow the steps below to disable your pop-blocker. You can enable the pop-up blocker after using the learning management site.

1. In your Internet Explorer browser window, click on the Tools menu at the top.
2. Select Pop-Up Blocker from the drop-down menu list.
3. Click Turn Off Pop-Up Blocker.
4. When you are finished using this Interactive Mapping site, go back to the Tools menu, select Pop-Up blocker, and click Turn On Pop-Up Blocker (if you want to turn it back on).

If you are still experiencing problems with pop-up windows not appearing after following the steps above, make sure you don't have multiple pop-up blockers (like Google Search Bar pop-up blocker) enabled. The following links are provided for additional common software packages that can be set up to enable pop up blockers.

Google Toolbar:

http://toolbar.google.com/popup_help.html

Earthlink Pop Up Blocker Support Site:

<http://www.earthlink.net/home/software/popupblocker/totalaccessdownload/>

Netscape 7.x:

While on the login page, in your menu, go to Tools -> Popup Manager -> Allow Popups From This Site

Another internet site that has information about how to turn off pop-up blockers

<http://de.usa.edu/HowTo/How2PopupBlockers.html>