

GE Healthcare

Education Services

Ultrasound

2011 Technical Education



imagination at work

Instructor-Led Courses

Image Vault 1

LOGIQ e/i 2

LOGIQ E9 3

LOGIQ P3 4

LOGIQ P5/P6 5

LOGIQ S6 6

LOGIQ 7 7

LOGIQ 9 8

Vivid E9 9

Vivid S5/S6 10

Vivid 7 11

Voluson E8/E6 12

Voluson i/q 13

Voluson 730 14

Self-Paced Courses

Cardiac Applications 15

Ultrasound Basic Physics Instrumentation 16

US LOGIQ Family 17

Vivid 7 18

Venue 40 19

Healthcare IT Courses

Essentials of Healthcare ITSM 20

Securing the Healthcare IT EnvironmentSM 21

Wireless in the Healthcare IT EnvironmentSM 22

Essentials of HL7[®] 23

Essentials of DICOM[®] 24

Technical Education

Education Centers

Waukesha, WI - The Healthcare Institute has expanded to include classrooms to support anesthesia classes and our new Healthcare IT curriculum.

Madison, WI - Our original center of learning for life support device education now includes our new Healthcare IT curriculum.

Jupiter, FL - Our center of excellence for patient monitoring product support now includes new classrooms featuring our new Healthcare IT curriculum and many GE product training classes.

Remote Locations - Periodically, we take classes to strategic locations for added customer convenience. Check our website for the most current list of classes www.gehealthcare.com/training.

Hosting a Class - If you have a group to train, consider hosting a class at your facility. Our instructors can bring a number of our courses to you for maximum flexibility and convenience. You eliminate travel expense and have the advantage of training multiple staff at the same time, which can reinforce learning.

GE Health and Safety Policy

GE Healthcare requires students to wear closed-toe and closed-heel shoes while attending training. Safety toe-shoes are required, but steel-toe shoe covers are available in the classroom. Open-toe, high-heel shoes or sandals are not permitted.

About Technical Education from GE Healthcare

GE Healthcare Education Services delivers technical education for Diagnostic Imaging, Computed Tomography, Magnetic Resonance, Mammography, Nuclear Medicine/PET, Ultrasound, Monitoring, Diagnostic Cardiology, Infant Care and Anesthesia Delivery Systems and Respiratory products. We also offer a curriculum of Healthcare IT classes focused specifically on the needs of today's biomedical and technical professionals.

Our goal is to be recognized as the global leader in healthcare education solutions.

- Building customer knowledge and competencies through a diverse educational portfolio in an increasingly complex healthcare environment.
- Striving to exceed customer expectations by delivering exceptional quality education that is clinically relevant and has a measurable impact on practice.
- Be a provider of choice for Healthcare IT education regardless of medical equipment choices, previous learning or experience.

Added value for your education investment

College credit is available for many of our classes, both technical and Healthcare IT, through the University of Phoenix and DeVry University. If you are working toward a degree, or contemplating one, these classes may bring you closer to completion. Visit www.gehealthcare.com/training and choose "College Credit for Technical Training" for more information on these programs.

For your convenience, we now have one number to call for information on any course.

1-888-799-9921

Student Information

Registration Instructions

Registration is online. Go to www.gehealthcare.com/training and choose the appropriate category for course schedules and registration link. Select your course and complete all information. Print a copy for your files before submitting. When done, click on Save and Submit to send registration form to a Training Coordinator.

Students enrolling in Ultrasound technical classes are required to submit the Technical Agreement & Employment Verification Form located on the electronic form. Print a copy of the form, complete and sign. Fax signed form to 1-262-546-0997.

Confirmation of enrollment is sent via e-mail from CorpMyLearning within 2 business days.

Policies and Terms

- Accepted via email or phone: 888-799-9921 or edservices@ge.com
- Must be received 15 business days prior to the course start date
- A \$1,000 per week "no-show" or cancellation fee will be incurred if a student does not show up for class or does not cancel before the 15 business day window
- GE reserves the right to cancel or reschedule any class. GE will not be held responsible for any travel costs incurred due to causes beyond our control, such as, but not limited to, hurricanes, tornados, or strikes

Attendance

- Students are required to arrive on time for class.
- Class start and end times vary. Please refer to your e-mail enrollment notification.
- A "no-show" is not eligible for tuition reimbursement.
- Students must pass an assessment to receive certificate of successful completion.

Cancellations

- Must be received 15 business days prior to the scheduled start date.
- Accepted via e-mail or phone.
- Fee of 50% will be charged of total tuition for cancellations less than 15 days of the scheduled class date.

Low Enrollment

GE Healthcare reserves the right to cancel classes due to low enrollment. Classes with low enrollment 15 business days prior to the scheduled date will be cancelled. Please consider this when booking your travel.

When GE Healthcare cancels a class, tuition will be refunded in full. Alternatively, tuition may be applied to the cost of another class scheduled to take place within 12 months of the original class.

GE Healthcare will not be held responsible for any travel costs incurred due to circumstances beyond our control, such as, but not limited to, hurricanes, tornados, or labor strikes.

Many classes contain lecture and lab exercises requiring networking skills. The fundamentals of networking are not covered in products classes.

IT Pre-requisites

The following IT skills are required prior to enrollment.*

IP Addressing
Switch Troubleshooting
Troubleshooting Wireless Networks
Subnetting
Router Configuration
Network Connectivity
Hard Drives
Access Control Lists
Communication Paths
Hardware Replacement
Router Troubleshooting
Network Troubleshooting
Hubs
POST
Back-up Systems
Switch Port Configuration
Access Point Configuration

* Courses requiring Healthcare IT competency are identified on the course description page

Accepted demonstration of Healthcare IT competency:

- CompTIA Network+®, Microsoft MCP®, or Cisco CCNA® certification
- Essentials of Healthcare ITSM
- Participants may complete a test to demonstrate IT competencies required for specific courses.

Image Vault

The Image Vault Ultrasound class introduces the student to the Image Vault Dimension system, which is part of GE Healthcare's group of Cardiac Ultrasound products. Students learn about the system's administrative operation, hardware components and capabilities, component replacement, connectivity to source devices and workstations. Participants will also review connectivity to archive solutions, and how to perform the necessary planned maintenance and repair procedures. This course includes hands-on lab exercises and troubleshooting problems.

Intended Audience

- Biomedical equipment technicians
- Biomedical and clinical engineers

Customer Requirements

Customers are required to bring a computer laptop to class. The laptop will be used to view electronic documentation and operate software service tools, which are provided during class.

Computer Laptop Requirements:

- Hardware: PC based (not Mac®), Wireless Network Card, DB 9 Serial port, CD ROM, USB port, AC Power Cord
- Operating System: Microsoft Windows® 2000 or XP Professional only
- Software: Microsoft Internet Explorer ver. 5.5 or greater, Microsoft Windows Media Player® 10 or greater, Adobe Reader® (latest version), latest Adobe Flash® plug-ins, HyperTerminal or other terminal emulation program.
- Local administrator access
- Ability to disable spyware and virus scan programs
- No other versions of Ghost previously installed

GE Healthcare's Technical Service Package is not included in this education class price, and is recommended for this course. If you do not already license this Technical Service Package, GE Healthcare recommends that you purchase a license prior to attending this course. For information on licensing this material for ultrasound, please call 888-434-8666 or contact your local GE Healthcare representative. For advanced imaging products, please call 800-437-1171.



Purchase Packages:

Tuition:

R0271PG \$8,055

Tuition & lodging:

R0272PG \$8,980

Tuition, lodging & air:

R0273PG \$10,080*

* US Only

Delivery Method: Classroom

Length of Course: 5 days

Course Location:

Please visit www.gehealthcare.com/training for the most current information on dates and locations.

Pre-Requisites:

- Ultrasound Basic Physics and Instrumentation pre-work

Required IT Skills:

- GE Essentials of Healthcare IT or equivalent

For list of core IT skills, see chart on the Student Information page.

LOGIQ e/i

This course is designed to give participants in depth knowledge of the LOGIQ e and LOGIQ i products illustrating the practical skills needed to install software and peripherals, set up connectivity with other networking devices, and troubleshoot the system. Participants will review basic system operations, identification of service tools and diagnostics, and how to disassemble the system. The course will provide a detailed explanation of the individual hardware and software components and their integration and interconnectivity with other system components. Participants will learn hands-on skills in labs designed to reinforce principles reviewed in class.



Intended Audience

- Biomedical equipment technicians
- Biomedical and clinical engineers

Customer Requirements

Customers are required to bring a computer laptop to class. The laptop will be used to view electronic documentation and operate software service tools, which are provided during class.

Computer Laptop Requirements:

- Hardware: PC based (not Mac®), Wireless Network Card, DB 9 Serial port, CD ROM, USB port, AC Power Cord
- Operating System: Microsoft Windows® 2000 or XP Professional only
- Software: Microsoft Internet Explorer ver. 5.5 or greater, Microsoft Windows Media Player® 10 or greater, Adobe Reader® (latest version), latest Adobe Flash® plug-ins, HyperTerminal or other terminal emulation program.
- Local administrator access
- Ability to disable spyware and virus scan programs
- No other versions of Ghost previously installed

GE Healthcare's Technical Service Package is not included in this education class price, and is recommended for this course. If you do not already license this Technical Service Package, GE Healthcare recommends that you purchase a license prior to attending this course. For information on licensing this material for ultrasound, please call 888-434-8666 or contact your local GE Healthcare representative. For advanced imaging products, please call 800-437-1171.

Purchase Packages:

Tuition:

R0304PG \$8,625

Tuition & lodging:

R0305PG \$8,995

Tuition, lodging & air:

R0306PG \$9,890*

* US Only

Delivery Method: Classroom

Length of Course: 2 days

Course Location:

Please visit www.gehealthcare.com/training for the most current information on dates and locations.

Pre-Requisites:

- Ultrasound Basic Physics and Instrumentation pre-work

Recommended IT Skills:

- GE Essentials of Healthcare IT or equivalent
- GE Essentials of DICOM

For list of core IT skills, see chart on the Student Information page.

LOGIQ E9

The LOGIQ E9 course includes product training on the LOGIQ E9 and advanced applications of Volume Navigation and Scan Assistant. Participants will get hands-on experience in product, peripheral and DICOM® configuration, SW reload, system disassembly, and troubleshooting. The applications portion includes the configuration and use of the new Volume Navigation and Scan Assistant features.

Intended Audience

- Biomedical equipment technicians
- Biomedical and clinical engineers



Customer Requirements

Customers are required to bring a computer laptop to class. The laptop will be used to view electronic documentation and operate software service tools, which are provided during class.

Computer Laptop Requirements:

- Hardware: PC based (not Mac®), Wireless Network Card, DB 9 Serial port, CD ROM, USB port, AC Power Cord
- Operating System: Microsoft Windows® 2000 or XP Professional only
- Software: Microsoft Internet Explorer ver. 5.5 or greater, Microsoft Windows Media Player® 10 or greater, Adobe Reader® (latest version), latest Adobe Flash® plug-ins, HyperTerminal or other terminal emulation program.
- Local administrator access
- Ability to disable spyware and virus scan programs
- No other versions of Ghost previously installed

GE Healthcare's Technical Service Package is not included in this education class price, and is recommended for this course. If you do not already license this Technical Service Package, GE Healthcare recommends that you purchase a license prior to attending this course. For information on licensing this material for ultrasound, please call 888-434-8666 or contact your local GE Healthcare representative. For advanced imaging products, please call 800-437-1171.

Purchase Packages:

Tuition:

R0310PG \$14,255

Tuition & lodging:

R0311PG \$15,180

Tuition, lodging & air:

R0312PG \$16,075*

* US Only

Delivery Method: Classroom

Strongly Recommended:

- GE Essentials of DICOM

Length of Course: 5 days

Course Location:

Please visit www.gehealthcare.com/training for the most current information on dates and locations.

Pre-Requisites:

- Ultrasound Basic Physics and Instrumentation pre-work

Required IT Skills:

- GE Essentials of Healthcare IT or equivalent

Recommended IT Skills:

- GE Essentials of DICOM

For list of core IT skills, see chart on the Student Information page.

LOGIQ P3

The LOGIQ P3 Technical Training course provides service personnel with the knowledge and skills they will need to support the product. Topics include: an overview of the system; system operation and applications; networking, DICOM and connectivity functions; troubleshooting; and performing planned maintenance.

Intended Audience

- Biomedical equipment technicians
- Biomedical and clinical engineers

Customer Requirements

Customers are required to bring a computer laptop to class. The laptop will be used to view electronic documentation and operate software service tools, which are provided during class.

Computer Laptop Requirements:

- Hardware: PC based (not Mac®), Wireless Network Card, DB 9 Serial port, CD ROM, USB port, AC Power Cord
- Operating System: Microsoft Windows® 2000 or XP Professional only
- Software: Microsoft Internet Explorer ver. 5.5 or greater, Microsoft Windows Media Player® 10 or greater, Adobe Reader® (latest version), latest Adobe Flash® plug-ins, HyperTerminal or other terminal emulation program.
- Local administrator access
- Ability to disable spyware and virus scan programs
- No other versions of Ghost previously installed

GE Healthcare's Technical Service Package is not included in this education class price, and is recommended for this course. If you do not already license this Technical Service Package, GE Healthcare recommends that you purchase a license prior to attending this course. For information on licensing this material for ultrasound, please call 888-434-8666 or contact your local GE Healthcare representative. For advanced imaging products, please call 800-437-1171.



Purchase Packages:

Tuition:	
R0347PG	\$5,750
Tuition & lodging:	
R0348PG	\$6,120
Tuition, lodging & air:	
R0349PG	\$7,015*
* US Only	

Delivery Method: Classroom

Length of Course: 3 days

Course Location:

Please visit www.gehealthcare.com/training for the most current information on dates and locations.

Pre-Requisites:

- Ultrasound Basic Physics and Instrumentation pre-work

Recommended IT Skills:

- GE Essentials of Healthcare IT or equivalent

For list of core IT skills, see chart on the Student Information page.

LOGIQ P5/P6

The LOGIQ P5/P6 Ultrasound class introduces students to the TruScan architecture of the LOGIQ family of Ultrasound products. Students learn about the system's capabilities, component replacement, and how to perform the necessary preventive maintenance and repair procedures. The course is primarily hands-on lab exercises and troubleshooting problems. Labs include:

- Operation and Applications
- Configuration (System and DICOM)
- Hardware Identification and Replacement
- Preventive Maintenance and QA
- Troubleshooting and Software Loading

Intended Audience

- Biomedical equipment technicians
- Biomedical and clinical engineers

Customer Requirements

Customers are required to bring a computer laptop to class. The laptop will be used to view electronic documentation and operate software service tools, which are provided during class.

Computer Laptop Requirements:

- Hardware: PC based (not Mac®), Wireless Network Card, DB 9 Serial port, CD ROM, USB port, AC Power Cord
- Operating System: Microsoft Windows® 2000 or XP Professional only
- Software: Microsoft Internet Explorer ver. 5.5 or greater, Microsoft Windows Media Player® 10 or greater, Adobe Reader® (latest version), latest Adobe Flash® plug-ins, HyperTerminal or other terminal emulation program.
- Local administrator access
- Ability to disable spyware and virus scan programs
- No other versions of Ghost previously installed

GE Healthcare's Technical Service Package is not included in this education class price, and is recommended for this course. If you do not already license this Technical Service Package, GE Healthcare recommends that you purchase a license prior to attending this course. For information on licensing this material for ultrasound, please call 888-434-8666 or contact your local GE Healthcare representative. For advanced imaging products, please call 800-437-1171.



Purchase Packages:

Tuition:

R0322PG \$8,625

Tuition & lodging:

R0323PG \$9,180

Tuition, lodging & air:

R0324PG \$10,075*

* US Only

Delivery Method: Classroom

Length of Course: 3 days

Course Location:

Please visit www.gehealthcare.com/training for the most current information on dates and locations.

Recommended IT Skills:

- GE Essentials of Healthcare IT or equivalent

For list of core IT skills, see chart on the Student Information page.

LOGIQ S6

The LOGIQ S6 Ultrasound class introduces students to the TruScan® architecture of the LOGIQ family of Ultrasound products. Students learn about the system's capabilities, component replacement, and how to perform the necessary planned maintenance and repair procedures. The course is primarily hands-on lab exercises and troubleshooting problems.

Intended Audience

- Biomedical equipment technicians
- Biomedical and clinical engineers

Customer Requirements

Customers are required to bring a computer laptop to class. The laptop will be used to view electronic documentation and operate software service tools, which are provided during class.

Computer Laptop Requirements:

- Hardware: PC based (not Mac®), Wireless Network Card, DB 9 Serial port, CD ROM, USB port, AC Power Cord
- Operating System: Microsoft Windows® 2000 or XP Professional only
- Software: Microsoft Internet Explorer ver. 5.5 or greater, Microsoft Windows Media Player® 10 or greater, Adobe Reader® (latest version), latest Adobe Flash® plug-ins, HyperTerminal or other terminal emulation program.
- Local administrator access
- Ability to disable spyware and virus scan programs
- No other versions of Ghost previously installed

GE Healthcare's Technical Service Package is not included in this education class price, and is recommended for this course. If you do not already license this Technical Service Package, GE Healthcare recommends that you purchase a license prior to attending this course. For information on licensing this material for ultrasound, please call 888-434-8666 or contact your local GE Healthcare representative. For advanced imaging products, please call 800-437-1171.

Purchase Packages:

Tuition:

R0262PG \$8,625

Tuition & lodging:

R0263PG \$9,180

Tuition, lodging & air:

R0264PG \$10,075*

* US Only

Delivery Method: Classroom

Length of Course: 3 days

Course Location:

Please visit www.gehealthcare.com/training for the most current information on dates and locations.

Pre-Requisites:

- Ultrasound Basic Physics and Instrumentation pre-work

Recommended IT Skills:

- GE Essentials of Healthcare IT or equivalent

For list of core IT skills, see chart on the Student Information page.

LOGIQ 7

The LOGIQ 7 course includes the 4 day LOGIQ 9 course. The LOGIQ 7 portion of the course is designed to provide knowledge of the LOGIQ 7 hardware differences between the LOGIQ 9 Ultrasound system and the LOGIQ 7 system. The LOGIQ 9 and LOGIQ 7 systems both incorporate the TruScan architecture and share common user controls, peripherals, system and DICOM configuration. Designed for the in-house biomedical or clinical engineer who will service both LOGIQ 9 and LOGIQ 7 systems, the course contains additional hands-on labs for LOGIQ 7 hardware identification and replacement.

Note: Participants interested in only the LOGIQ 9 should register for the LOGIQ 9 course.

Intended Audience

- Biomedical equipment technicians
- Biomedical and clinical engineers

Customer Requirements

Customers are required to bring a computer laptop to class. The laptop will be used to view electronic documentation and operate software service tools, which are provided during class.

Computer Laptop Requirements:

- Hardware: PC based (not Mac®), Wireless Network Card, DB 9 Serial port, CD ROM, USB port, AC Power Cord
- Operating System: Microsoft Windows® 2000 or XP Professional only
- Software: Microsoft Internet Explorer ver. 5.5 or greater, Microsoft Windows Media Player® 10 or greater, Adobe Reader® (latest version), latest Adobe Flash® plug-ins, HyperTerminal or other terminal emulation program.
- Local administrator access
- Ability to disable spyware and virus scan programs
- No other versions of Ghost previously installed

GE Healthcare's Technical Service Package is not included in this education class price, and is recommended for this course. If you do not already license this Technical Service Package, GE Healthcare recommends that you purchase a license prior to attending this course. For information on licensing this material for ultrasound, please call 888-434-8666 or contact your local GE Healthcare representative. For advanced imaging products, please call 800-437-1171.

Purchase Packages:

Tuition:

R0220PG \$13125

Tuition & lodging:

R0230PG \$14,050

Tuition, lodging & air:

R0231PG \$14,945*

* US Only

Delivery Method: Classroom

Length of Course: 5 days

Course Location:

Please visit www.gehealthcare.com/training for the most current information on dates and locations.

Recommended IT Skills:

- GE Essentials of Healthcare IT or equivalent

For list of core IT skills, see chart on the Student Information page.

LOGIQ 9

The LOGIQ 9 Ultrasound course introduces the participants to the TruScan architecture for radiology ultrasound products. Designed for an in-house biomedical or clinical engineer, this course contains hands-on lab exercises that explore the system's capabilities, component replacement, and necessary planned maintenance and repair procedures. Labs also include configuration (System and DICOM), hardware identification and replacement, software loading and troubleshooting.

Intended Audience

- Biomedical equipment technicians
- Biomedical and clinical engineers

Customer Requirements

Customers are required to bring a computer laptop to class. The laptop will be used to view electronic documentation and operate software service tools, which are provided during class.

Computer Laptop Requirements:

- Hardware: PC based (not Mac®), Wireless Network Card, DB 9 Serial port, CD ROM, USB port, AC Power Cord
- Operating System: Microsoft Windows® 2000 or XP Professional only
- Software: Microsoft Internet Explorer ver. 5.5 or greater, Microsoft Windows Media Player® 10 or greater, Adobe Reader® (latest version), latest Adobe Flash® plug-ins, HyperTerminal or other terminal emulation program.
- Local administrator access
- Ability to disable spyware and virus scan programs
- No other versions of Ghost previously installed

GE Healthcare's Technical Service Package is not included in this education class price, and is recommended for this course. If you do not already license this Technical Service Package, GE Healthcare recommends that you purchase a license prior to attending this course. For information on licensing this material for ultrasound, please call 888-434-8666 or contact your local GE Healthcare representative. For advanced imaging products, please call 800-437-1171.



Purchase Packages:

Tuition:	
R0216PG	\$11,555
Tuition & lodging:	
R0232PG	\$12,295
Tuition, lodging & air:	
R0233PG	\$13,190*
* US Only	

Delivery Method: Classroom

Length of Course: 4 days

Course Location:

Please visit www.gehealthcare.com/training for the most current information on dates and locations.

Recommended IT Skills:

- GE Essentials of Healthcare IT or equivalent

For list of core IT skills, see chart on the Student Information page.

Vivid E9

The Vivid E9 course includes training on the Vivid E9 product, advanced cardiac connectivity and advanced cardiac applications. Participants will get hands-on experience in product configuration, setting up network connectivity, SW reload, disassembly, and troubleshooting. The cardiac connectivity component includes fundamentals of file sharing, MPEGVue® and eVue, disk partitions and file structures in Windows, disk management, and cardiac vs. DICOM connectivity. The applications portion includes identifying the phases of stress echo, multiplane cardiac and 4D imaging, TEE probes, and specialized scan modes.

Intended Audience

- Biomedical equipment technicians
- Biomedical and clinical engineers

Customer Requirements

Customers are required to bring a computer laptop to class. The laptop will be used to view electronic documentation and operate software service tools, which are provided during class.

Computer Laptop Requirements:

- Hardware: PC based (not Mac®), Wireless Network Card, DB 9 Serial port, CD ROM, USB port, AC Power Cord
- Operating System: Microsoft Windows® 2000 or XP Professional only
- Software: Microsoft Internet Explorer ver. 5.5 or greater, Microsoft Windows Media Player® 10 or greater, Adobe Reader® (latest version), latest Adobe Flash® plug-ins, HyperTerminal or other terminal emulation program.
- Local administrator access
- Ability to disable spyware and virus scan programs
- No other versions of Ghost previously installed

GE Healthcare's Technical Service Package is not included in this education class price, and is recommended for this course. If you do not already license this Technical Service Package, GE Healthcare recommends that you purchase a license prior to attending this course. For information on licensing this material for ultrasound, please call 888-434-8666 or contact your local GE Healthcare representative. For advanced imaging products, please call 800-437-1171.



Purchase Packages:

Tuition:

R0313PG \$14,255

Tuition & lodging:

R0314PG \$15,180

Tuition, lodging & air:

R0315PG \$16,075*

* US Only

Delivery Method: Classroom

Length of Course: 4 days

Course Location:

Please visit www.gehealthcare.com/training for the most current information on dates and locations.

Pre-Requisites:

- Ultrasound Basic Physics and Instrumentation pre-work

Recommended IT Skills:

- GE Essentials of Healthcare IT or equivalent

For list of core IT skills, see chart on the Student Information page.

Vivid S5/S6

This course covers overview, networking, and troubleshooting the Vivid S5 and Vivid S6 systems – successors to the Vivid 3 and Vivid 4 platforms. The course provides a detailed explanation of the individual hardware and software components and their integration and interconnectivity with other system components. Participants will learn hands-on skills in labs designed to reinforce principles reviewed in class.

Intended Audience

- Biomedical equipment technicians
- Biomedical and clinical engineers

Customer Requirements

Customers are required to bring a computer laptop to class. The laptop will be used to view electronic documentation and operate software service tools, which are provided during class.

Computer Laptop Requirements:

- Hardware: PC based (not Mac®), Wireless Network Card, DB 9 Serial port, CD ROM, USB port, AC Power Cord
- Operating System: Microsoft Windows® 2000 or XP Professional only
- Software: Microsoft Internet Explorer ver. 5.5 or greater, Microsoft Windows Media Player® 10 or greater, Adobe Reader® (latest version), latest Adobe Flash® plug-ins, HyperTerminal or other terminal emulation program.
- Local administrator access
- Ability to disable spyware and virus scan programs
- No other versions of Ghost previously installed

GE Healthcare's Technical Service Package is not included in this education class price, and is recommended for this course. If you do not already license this Technical Service Package, GE Healthcare recommends that you purchase a license prior to attending this course. For information on licensing this material for ultrasound, please call 888-434-8666 or contact your local GE Healthcare representative. For advanced imaging products, please call 800-437-1171.



Purchase Packages:

Tuition:

R0316PG \$8,625

Tuition & lodging:

R0317PG \$9,365

Tuition, lodging & air:

R0318PG \$10,260*

* US Only

Delivery Method: Classroom

Length of Course: 4 days

Course Location:

Please visit www.gehealthcare.com/training for the most current information on dates and locations.

Pre-Requisites:

- Ultrasound Basic Physics and Instrumentation pre-work

Recommended IT Skills:

- GE Essentials of Healthcare IT or equivalent

For list of core IT skills, see chart on the Student Information page.

Vivid 7

The Vivid 7 Ultrasound class introduces students to the TruScan architecture of the VIVID family of Ultrasound products. Participants learn about the system's capabilities, component replacement, and how to perform the necessary planned maintenance and repair procedures. The course is primarily hands-on lab exercises and troubleshooting problems.

Intended Audience

- Biomedical equipment technicians
- Biomedical and clinical engineers

Customer Requirements

Customers are required to bring a computer laptop to class. The laptop will be used to view electronic documentation and operate software service tools, which are provided during class.

Computer Laptop Requirements:

- Hardware: PC based (not Mac®), Wireless Network Card, DB 9 Serial port, CD ROM, USB port, AC Power Cord
- Operating System: Microsoft Windows® 2000 or XP Professional only
- Software: Microsoft Internet Explorer ver. 5.5 or greater, Microsoft Windows Media Player® 10 or greater, Adobe Reader® (latest version), latest Adobe Flash® plug-ins, HyperTerminal or other terminal emulation program.
- Local administrator access
- Ability to disable spyware and virus scan programs
- No other versions of Ghost previously installed

GE Healthcare's Technical Service Package is not included in this education class price, and is recommended for this course. If you do not already license this Technical Service Package, GE Healthcare recommends that you purchase a license prior to attending this course. For information on licensing this material for ultrasound, please call 888-434-8666 or contact your local GE Healthcare representative. For advanced imaging products, please call 800-437-1171.

Purchase Packages:

Tuition:

R0217PG \$13,115

Tuition & lodging:

R0236PG \$14,040

Tuition, lodging & air:

R0237PG \$14,935*

* US Only

Delivery Method: Classroom

Length of Course: 5 days

Course Location:

Please visit www.gehealthcare.com/training for the most current information on dates and locations.

Pre-Requisites:

- Ultrasound Basic Physics and Instrumentation pre-work

Recommended IT Skills:

- GE Essentials of Healthcare IT or equivalent

For list of core IT skills, see chart on the Student Information page.

Voluson E8/E6

The VOLUSON E8/E6 course is designed to introduce you to the VOLUSON E8/E6, the advanced technology imaging platform for women's healthcare. This course contains hands-on lab exercises for system troubleshooting, component replacement, system capabilities and necessary preventive maintenance and repair procedures. You will configure DICOM devices supported by the system, perform disassembly procedures and data transfers, understand the procedure to set up and export a program on the Scan Assistant, and compare and contrast the hardware options between the Voluson E8 BT09 and the Voluson E6 BT09. Labs also include software loading and back-up, and recovering key data.



Intended Audience

- Biomedical equipment technicians
- Biomedical and clinical engineers

Customer Requirements

Customers are required to bring a computer laptop to class. The laptop will be used to view electronic documentation and operate software service tools, which are provided during class.

Computer Laptop Requirements:

- Hardware: PC based (not Mac®), Wireless Network Card, DB 9 Serial port, CD ROM, USB port, AC Power Cord
- Operating System: Microsoft Windows® 2000 or XP Professional only
- Software: Microsoft Internet Explorer ver. 5.5 or greater, Microsoft Windows Media Player® 10 or greater, Adobe Reader® (latest version), latest Adobe Flash® plug-ins, HyperTerminal or other terminal emulation program.
- Local administrator access
- Ability to disable spyware and virus scan programs
- No other versions of Ghost previously installed

GE Healthcare's Technical Service Package is not included in this education class price, and is recommended for this course. If you do not already license this Technical Service Package, GE Healthcare recommends that you purchase a license prior to attending this course. For information on licensing this material for ultrasound, please call 888-434-8666 or contact your local GE Healthcare representative. For advanced imaging products, please call 800-437-1171.

Purchase Packages:

Tuition:

R0245PG \$13,115

Tuition & lodging:

R0246PG \$14,040

Tuition, lodging & air:

R0247PG \$14,935*

* US Only

Delivery Method: Classroom

Length of Course: 5 days

Course Location:

Please visit www.gehealthcare.com/training for the most current information on dates and locations.

Pre-Requisites:

- Ultrasound Basic Physics and Instrumentation pre-work

Recommended IT Skills:

- GE Essentials of Healthcare IT or equivalent

For list of core IT skills, see chart on the Student Information page.

Voluson i/q

This course is an overview of the Voluson i/q product illustrating the practical skills needed to install system software and peripherals, set up connectivity with the network devices, and troubleshoot the system problems. Participants will be involved in performing basic system operations, using diagnostic tests and disassembling the system. The course will provide a detailed explanation of the individual hardware and software components and their integration and interconnectivity with other system components. Participants will learn hands-on skills in labs designed to reinforce principles reviewed in class.



Intended Audience

- Biomedical equipment technicians
- Biomedical and clinical engineers

Customer Requirements

Customers are required to bring a computer laptop to class. The laptop will be used to view electronic documentation and operate software service tools, which are provided during class.

Computer Laptop Requirements:

- Hardware: PC based (not Mac®), Wireless Network Card, DB 9 Serial port, CD ROM, USB port, AC Power Cord
- Operating System: Microsoft Windows® 2000 or XP Professional only
- Software: Microsoft Internet Explorer ver. 5.5 or greater, Microsoft Windows Media Player® 10 or greater, Adobe Reader® (latest version), latest Adobe Flash® plug-ins, HyperTerminal or other terminal emulation program.
- Local administrator access
- Ability to disable spyware and virus scan programs
- No other versions of Ghost previously installed

GE Healthcare's Technical Service Package is not included in this education class price, and is recommended for this course. If you do not already license this Technical Service Package, GE Healthcare recommends that you purchase a license prior to attending this course. For information on licensing this material for ultrasound, please call 888-434-8666 or contact your local GE Healthcare representative. For advanced imaging products, please call 800-437-1171.

Purchase Packages:

Tuition:

R0242PG \$8,825

Tuition & lodging:

R0243PG \$9,180

Tuition, lodging & air:

R0244PG \$10,075*

* US Only

Delivery Method: Classroom

Length of Course: 2 days

Course Location:

Please visit www.gehealthcare.com/training for the most current information on dates and locations.

Pre-Requisites:

- Ultrasound Basic Physics and Instrumentation pre-work

Recommended IT Skills:

- GE Essentials of Healthcare IT or equivalent

For list of core IT skills, see chart on the Student Information page.

Voluson 730

The Voluson 730 Ultrasound class introduces participants to the Real Time Volumetric Imaging family of Ultrasound products. Participants learn about the system's capabilities, component replacement, and how to perform the necessary planned maintenance and repair procedures. The course is primarily hands-on lab exercises and troubleshooting problems.

Intended Audience

- Biomedical equipment technicians
- Biomedical and clinical engineers



Customer Requirements

Customers are required to bring a computer laptop to class. The laptop will be used to view electronic documentation and operate software service tools, which are provided during class.

Computer Laptop Requirements:

- Hardware: PC based (not Mac®), Wireless Network Card, DB 9 Serial port, CD ROM, USB port, AC Power Cord
- Operating System: Microsoft Windows® 2000 or XP Professional only
- Software: Microsoft Internet Explorer ver. 5.5 or greater, Microsoft Windows Media Player® 10 or greater, Adobe Reader® (latest version), latest Adobe Flash® plug-ins, HyperTerminal or other terminal emulation program.
- Local administrator access
- Ability to disable spyware and virus scan programs
- No other versions of Ghost previously installed

GE Healthcare's Technical Service Package is not included in this education class price, and is recommended for this course. If you do not already license this Technical Service Package, GE Healthcare recommends that you purchase a license prior to attending this course. For information on licensing this material for ultrasound, please call 888-434-8666 or contact your local GE Healthcare representative. For advanced imaging products, please call 800-437-1171.

Purchase Packages:

Tuition:

R0219PG \$13,115

Tuition & lodging:

R0240PG \$14,040

Tuition, lodging & air:

R0241PG \$14,935*

* US Only

Delivery Method: Classroom

Length of Course: 5 days

Course Location:

Please visit www.gehealthcare.com/training for the most current information on dates and locations.

Pre-Requisites:

- Ultrasound Basic Physics and Instrumentation pre-work
- Complete Voluson 730 Service

Recommended IT Skills:

- GE Essentials of Healthcare IT or equivalent

For list of core IT skills, see chart on the Student Information page.

Cardiac Applications

Pre-course work for the Vivid scanner classes. Course topics include: cardiac anatomy, typical cardiac scans and exam types, and how to evaluate cardiac exams.

Intended Audience

- Biomedical equipment technicians
- Biomedical and clinical engineers

Customer Requirements

A computer, or computer access with CD ROM drive required to use this CD course.

Computer Requirements:

- Hardware: PC based (not Mac®), Wireless Network Card, DB 9 Serial port, CD ROM drive
- Operating System: Microsoft Windows® 2000 or XP Professional only
- Software: Microsoft Internet Explorer ver. 5.5 or greater, Microsoft Windows Media Player® 10 or greater, Adobe Reader® (latest version), latest Adobe Flash® plug-ins, HyperTerminal or other terminal emulation program.

GE Healthcare's Technical Service Package is not included in this education class price, and is recommended for this course. If you do not already license this Technical Service Package, GE Healthcare recommends that you purchase a license prior to attending this course. For information on licensing this material for ultrasound, please call 888-434-8666 or contact your local GE Healthcare representative. For advanced imaging products, please call 800-437-1171.

Tuition:

R0224PG

\$2,000

Delivery Method: CD

Length of Course: 10 hours

Ultrasound Basic Physics Instrumentation

This course provides an overview of the three primary areas within ultrasound: Principles, Components and Functions, and Applications. The Principles section includes an introduction to ultrasound, ultrasound production, sound characteristics, image generation, and ultrasound characteristics. The Components and Functions Section includes system overview, system Control, transducers, operator controls, beam former, display devices, mode processors, image archiving, and image storage. The Applications section includes application of ultrasound; scan planes and orientation, abdomen, OB/GYN and anatomy structure visualized with ultrasound such as the abdomen, fetus male and female pelvis.

Intended Audience

- Biomedical equipment technicians
- Biomedical and clinical engineers

Customer Requirements

A computer, or computer access with CD ROM drive required to use this CD course.

Computer Requirements:

- Hardware: PC based (not Mac®), Wireless Network Card, DB 9 Serial port, CD ROM drive
- Operating System: Microsoft Windows® 2000 or XP Professional only
- Software: Microsoft Internet Explorer ver. 5.5 or greater, Microsoft Windows Media Player® 10 or greater, Adobe Reader® (latest version), latest Adobe Flash® plug-ins, HyperTerminal or other terminal emulation program.

GE Healthcare's Technical Service Package is not included in this education class price, and is recommended for this course. If you do not already license this Technical Service Package, GE Healthcare recommends that you purchase a license prior to attending this course. For information on licensing this material for ultrasound, please call 888-434-8666 or contact your local GE Healthcare representative. For advanced imaging products, please call 800-437-1171.

Tuition:
R0205PG \$3,000

Delivery Method: CD

Length of Course: 24 hours

US LOGIQ Family

The LOGIQ Family course is required for LOGIQ 7 & 9 courses. Course topics include: system overview, mechanical overview, safety, getting started, connectivity, measurement and analysis, system installation, software reload, basic troubleshooting FAQ, and applications.

Intended Audience

- Biomedical equipment technicians
- Biomedical and clinical engineers



Customer Requirements

A computer, or computer access with CD ROM drive required to use this CD course.

Computer Requirements:

- Hardware: PC based (not Mac®), Wireless Network Card, DB 9 Serial port, CD ROM drive
- Operating System: Microsoft Windows® 2000 or XP Professional only
- Software: Microsoft Internet Explorer ver. 5.5 or greater, Microsoft Windows Media Player® 10 or greater, Adobe Reader® (latest version), latest Adobe Flash® plug-ins, HyperTerminal or other terminal emulation program.

GE Healthcare's Technical Service Package is not included in this education class price, and is recommended for this course. If you do not already license this Technical Service Package, GE Healthcare recommends that you purchase a license prior to attending this course. For information on licensing this material for ultrasound, please call 888-434-8666 or contact your local GE Healthcare representative. For advanced imaging products, please call 800-437-1171.

Tuition:

R0209PG

\$2,300

Delivery Method: CD

Length of Course: 24 hours

Vivid 7

Pre-course work for the VIVID 7 Service Class. This course includes: cardiac applications, VIVID 7 features and operation, VIVID 7 components and theory and VIVID 7 diagnostics and troubleshooting.

Intended Audience

- Biomedical equipment technicians
- Biomedical and clinical engineers

Customer Requirements

A computer, or computer access with CD ROM drive required to use this CD course.

Computer Requirements:

- Hardware: PC based (not Mac®), Wireless Network Card, DB 9 Serial port, CD ROM drive
- Operating System: Microsoft Windows® 2000 or XP Professional only
- Software: Microsoft Internet Explorer ver. 5.5 or greater, Microsoft Windows Media Player® 10 or greater, Adobe Reader® (latest version), latest Adobe Flash® plug-ins, HyperTerminal or other terminal emulation program.

GE Healthcare's Technical Service Package is not included in this education class price, and is recommended for this course. If you do not already license this Technical Service Package, GE Healthcare recommends that you purchase a license prior to attending this course. For information on licensing this material for ultrasound, please call 888-434-8666 or contact your local GE Healthcare representative. For advanced imaging products, please call 800-437-1171.

Purchase Packages:

Tuition:

R0217PG \$13,115

Tuition & lodging:

R0236PG \$14,040

Tuition, lodging & air:

R0237PG \$14,935*

* US Only

Delivery Method: CD

Length of Course: 6 days

Venue 40

The Venue 40 Technical Training course provides service personnel with the knowledge and skills they will need to support the product. Topics include: an overview of the system; system hardware components; basic operation; installation and functional checks; service tools and diagnostic utilities; and disassembly.

Intended Audience

- Biomedical equipment technicians
- Biomedical and clinical engineers

Customer Requirements

Customers are required to bring a computer laptop to class. The laptop will be used to view electronic documentation and operate software service tools, which are provided during class.

Computer Laptop Requirements:

- Hardware: PC based (not Mac®), Wireless Network Card, DB 9 Serial port, CD ROM, USB port, AC Power Cord
- Operating System: Microsoft Windows® 2000 or XP Professional only
- Software: Microsoft Internet Explorer ver. 5.5 or greater, Microsoft Windows Media Player® 10 or greater, Adobe Reader® (latest version), latest Adobe Flash® plug-ins, HyperTerminal or other terminal emulation program.
- Local administrator access
- Ability to disable spyware and virus scan programs
- No other versions of Ghost previously installed

GE Healthcare's Technical Service Package is not included in this education class price, and is recommended for this course. If you do not already license this Technical Service Package, GE Healthcare recommends that you purchase a license prior to attending this course. For information on licensing this material for ultrasound, please call 888-434-8666 or contact your local GE Healthcare representative. For advanced imaging products, please call 800-437-1171.



Tuition:

R0325PG

\$745

Delivery Method: Web

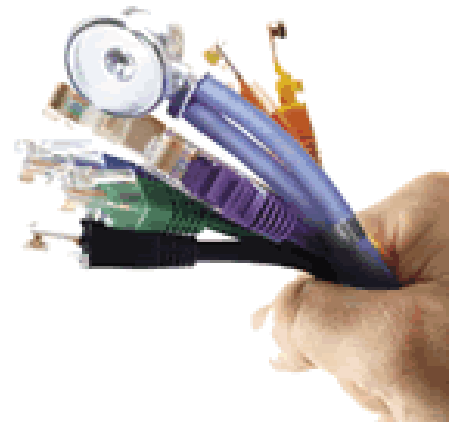
Course Location:

Please visit www.gehealthcare.com/training for the most current information on dates and locations.

Length of Course: 2 hours

Essentials of Healthcare ITSM

This instructor-led class is specifically designed for technical professionals responsible for the installation and support of medical devices and the networks interconnecting them. The class is taught by highly qualified technical trainers and will focus on developing the practical skills needed by a biomedical engineer to interface with networked devices in healthcare today. Extensive labs with plenty of hands-on time allows the student with no previous IT training to gain confidence in this new and exciting arena. The class will build and troubleshoot flat, switched, routed, and wireless networks. Basic computer skills are required.



Intended Audience

- Biomedical equipment technicians
- Biomedical and clinical engineers
- Biomedical and clinical engineering managers
- Medical technology managers
- Hospital IT staff
- Any professional who supports the field of medical technology

Purchase Packages:

Tuition:

R0248PG \$3,850

Tuition & lodging:

R0249PG \$4,775

Tuition, lodging & air:

R0250PG \$5,670*

* US Only

Delivery Method: Classroom

Length of Course: 5 days

Course Location:

Please visit www.gehealthcare.com/training for the most current information on dates and locations.

Securing the Healthcare IT EnvironmentSM

This instructor-led class is specifically designed for technical professionals responsible for the secure transport of electronic protected health information across healthcare IT infrastructures. This class is taught by experts in the healthcare IT field and topics include: a global security overview, relevant HIPAA Title II Privacy and Security Rule information, the top 10 HCIT network attacks and ways to prevent them, strategies to mitigate risk, and securing a home network. Hands-on labs include password cracking, configuring biometric identifiers, encryption, port scanning, using network analyzers, software firewall configuration, performing an MD5 Hash, and home router configuration. Students will perform a risk analysis of medical devices using MDS2 documentation and ACCE/ECRI tools. Basic computer skills and TCP/IP network troubleshooting techniques are required.



Intended Audience

- Biomedical equipment technicians
- Biomedical and clinical engineers
- Biomedical and clinical engineering managers
- Medical technology managers
- Hospital IT staff
- Any professional who supports the field of medical technology

Purchase Packages:

Tuition:

R0265PG \$5,000

Tuition & lodging:

R0266PG \$5,925

Tuition, lodging & air:

R0267PG \$6,820*

* US Only

Delivery Method: Classroom

Length of Course: 5 days

Course Location:

Please visit www.gehealthcare.com/training for the most current information on dates and locations.

Required IT Skills:

- GE Essentials of Healthcare IT or equivalent

For list of core IT skills, see chart on the Student Information page.

Wireless in the Healthcare IT EnvironmentSM

This vendor-neutral class focuses on the installation, management, and troubleshooting of RF technologies in healthcare today; including WMTS, 802.11, RFID, and cellular communications. Topics include RF and antenna basics, common interference sources in healthcare, remote patient viewing using the Wireless Medical Telemetry Service (WMTS), 802.11 and access point configuration including wireless VLANs, RFID basics, cellular communications, and security requirements for wireless systems. Students receive hands-on training with network analyzers and spectrum analyzers, perform site surveys for WMTS and 802.11, and troubleshoot WMTS antenna systems.



Intended Audience

- Biomedical equipment technicians
- Biomedical and clinical engineers

Purchase Packages:

Tuition:

R0268PG \$5,000

Tuition & lodging:

R0269PG \$5,925

Tuition, lodging & air:

R0270PG \$6,820*

* US Only

Delivery Method: Classroom

Length of Course: 5 days

Course Location:

Please visit www.gehealthcare.com/training for the most current information on dates and locations.

Required IT Skills:

- GE Essentials of Healthcare IT or equivalent

For list of core IT skills, see chart on the Student Information page.

Essentials of HL7®

This vendor-neutral class prepares the student to configure and troubleshoot HL7. Focusing on V2.x, students will learn to use the HL7 standard as a reference source as well as vendor conformance documents to aid in interface design. Topics include the structure and encoding of common patient administration, order, results, and billing messages, as well as interface design, data mapping, and vocabulary. Common troubleshooting techniques will be discussed and class concepts will be reinforced through use of the HL7 Messaging Workbench software. This instructor-led course is open to anyone wanting a more in-depth insight into HL7, regardless of equipment choice in the healthcare environment.



Intended Audience

- Biomedical equipment technicians
- Biomedical and clinical engineers
- Biomedical and clinical engineering managers
- Medical technology managers
- Hospital IT staff
- Any professional who supports the field of medical technology

Purchase Packages:

Tuition:

R0344PG \$2,350

Tuition & lodging:

R0345PG \$2,905

Tuition, lodging & air:

R0346PG \$3,800*

* US Only

Delivery Method: Classroom

Length of Course: 3 days

Course Location:

Please visit www.gehealthcare.com/training for the most current information on dates and locations.

Essentials of DICOM®

This instructor-led course prepares the participant to become proficient in the installation, maintenance and troubleshooting of DICOM on digital imaging networks. Participants will learn to use the DICOM standard as a reference source, analyze conformance statements for predicting connectivity, configure and use DICOM simulators, and capture and analyze DICOM traffic using freeware tools like the DICOM Validation Toolkit.

Intended Audience

- Biomedical equipment technicians
- Biomedical and clinical engineers
- Biomedical and clinical engineering managers
- Medical technology managers
- Hospital IT staff
- Radiologists
- Any professional who supports the field of medical technology



Purchase Packages:

Tuition:

R0307PG \$3,500

Tuition & lodging:

R0308PG \$4,055

Tuition, lodging & air:

R0309PG \$4,950*

* US Only

Delivery Method: Classroom

Length of Course: 3 days

Course Location:

Please visit www.gehealthcare.com/training for the most current information on dates and locations.

Required IT Skills:

- GE Essentials of Healthcare IT or equivalent

For list of core IT skills, see chart on the Student Information page.

© 2011 General Electric Company – All rights reserved.

GE and GE Monogram are trademarks of General Electric Company.

Image Vault, LOGIQ, Scan Assistant, Vivid, Volume Navigation, and Voluson are trademarks of General Electric Company.

Adobe Flash and Adobe Reader are registered trademarks of Adobe Systems Incorporated in the United States and/or other countries.

Ghost is a trademark of Symantec Corporation or its affiliates in the U.S. and other countries.

HyperTerminal is a registered trademark of Hilgraeve, Inc.

Internet Explorer, Windows and Windows Media are trademarks of the Microsoft group of companies.

Mac is a registered trademark of Apple, Inc., registered in the U.S. and other countries.

Essentials of Healthcare IT, Securing the Healthcare IT Environment, Wireless in the Healthcare IT Environment and Essentials of DICOM are service marks of General Electric Company.

CCNA is a registered trademark of Cisco Systems Inc., and /or its affiliates in the U.S. and certain other countries.

CompTIA and Network+ Certification are registered trademarks of Computing Technology Industry Association.

DICOM is a registered trademark of the National Electrical Manufacturers Association for its standards publications relating to digital communications of medical information.

HL7 is a registered trademark of Health Level Seven (HL7) Inc., the non-profit standards developing organization that is accredited by the American National Standards Institute, (ANSI).

University of Phoenix is a registered trademark of Apollo Group, Inc. in the United States and/or other countries.

GE Medical Systems Information Technologies, Inc., a General Electric company doing business as GE Healthcare.

GE Healthcare
N16 W22419 Watertown Road
Waukesha, WI 53186
U.S.A.
www.gehealthcare.com

