

GE Healthcare

Education Services

Positron Emission Tomography

2011 Technical Education



imagination at work

PET Courses

Discovery RX 1

Discovery STE 2

Discovery VCT 3

Discovery 600 4

Discovery 690 Elite 4

Optima 560 4

Discovery 690 5

Discovery 690 VCT 5

PET Advance 6

Pre-requisites/Fundamentals

LightSpeed Pro (HP60, Pro16, RT, BrightSpeed) 7

LightSpeed Series (4/8/16) Class/Lab 8

LightSpeed VCT (32/64 Slice) 9

PET Advance Basic 10

PET Basic Physics/Instrumentation 11

PET Basic Service 12

Healthcare IT Courses

Essentials of Healthcare ITSM 13

Securing the Healthcare IT EnvironmentSM 14

Wireless in the Healthcare IT EnvironmentSM 15

Essentials of HL7[®] 16

Essentials of DICOM[®] 17

Technical Service Training Tailored to Fit Your Needs!

Education Centers

Waukesha, WI - The GE Healthcare Institute is a state of the art facility providing a dedicated learning environment with over 210,000 square feet of learning space including 75 labs and 25 classrooms.

Blended Curriculum - Our technical service training offers a blended curriculum with web-based and in-resident courses. Our integrated training platform minimizes the time you spend away from home.

- **Web-based Courses**

Introductory, pre-requisite, and some differences courses are available for independent study.

- **In-Resident Courses**

(Classroom/Lab) Advanced courses held at the GE Healthcare Institute provide invaluable and practical hands-on training taught by industry-leading instructors.

Differences Courses - Tailored specifically for those who have previous training on GE Diagnostic Imaging Equipment and designed to bring you up to speed on the latest technology and equipment.

GE Health and Safety Policy

GE Healthcare requires students to wear closed-toe and closed-heel shoes while attending training. Safety toe-shoes are required, but steel-toe shoe covers are available in the classroom. Open-toe, high-heel shoes or sandals are not permitted.

About Technical Education from GE Healthcare

GE Healthcare Education Services delivers technical education for Diagnostic Imaging, Computed Tomography, Magnetic Resonance, Mammography, Molecular Imaging/PET, Ultrasound, Monitoring, Diagnostic Cardiology, Infant Care and Anesthesia Delivery Systems and Respiratory products. We also offer a curriculum of Healthcare IT classes focused specifically on the needs of today's biomedical and technical professionals.

Our goal is to be recognized as the global leader in healthcare education solutions.

- Building customer knowledge and competencies through a diverse educational portfolio in an increasingly complex healthcare environment.
- Striving to exceed customer expectations by delivering exceptional quality education that is clinically relevant and has a measurable impact on practice.
- Be a provider of choice for Healthcare IT education regardless of medical equipment choices, previous learning or experience.

Added value for your education investment

College credit is available for many of our classes, both technical and Healthcare IT, through the University of Phoenix and DeVry University. If you are working toward a degree, or contemplating one, these classes may bring you closer to completion. Visit www.gehealthcare.com/training and choose "College Credit for Technical Training" for more information on these programs.

Contact our registrar for more information.
EdServices@ge.com
or 1-888-799-9921 press option 2

Registration Instructions

To download the Registration form, go to www.gehealthcare.com/education (under Technical Service Education, select Diagnostic Imaging: GE). Click on the "Register" button and download the Service Training Application Form (pdf). After completing this form, fax to: 262-574-8627, Attn: Registrar, GE Technical Service Training. Or e-mail to: EdServices@ge.com

After your application form is received/approved, the Registrar will contact the student to confirm dates, course prerequisites, and housing details (if In-Resident). After attendance and payment details are confirmed, a formal confirmation letter will be sent. For current course information, pricing, registration, or lodging information, please visit our web site.

Policies and Terms

- Accepted via email or phone: 888-799-9921 or edservices@ge.com
- Must be received 15 business days prior to the course start date
- A \$1,000 per week "no-show" or cancellation fee will be incurred if a student does not show up for class or does not cancel before the 15 business day window
- GE reserves the right to cancel or reschedule any class. GE will not be held responsible for any travel costs incurred due to causes beyond our control, such as, but not limited to, hurricanes, tornados, or strikes

Attendance

- Students are required to arrive on time for class.
- Class start and end times vary. Please refer to your e-mail enrollment notification.
- A "no-show" is not eligible for tuition reimbursement.
- Students must pass an assessment to receive certificate of successful completion.

Cancellations

Please note that should cancellation of this class become necessary, less than

15 business days prior to the course start date, the following cancellation fees will be in effect:

Please contact the Training Registrar directly if cancellation is necessary.

- Courses with a duration of one week or less: \$1,000
- Courses with a duration of two weeks or less: \$2,000
- Courses with a duration of three weeks or less: \$3,000

Low Enrollment

GE Healthcare reserves the right to cancel classes due to low enrollment. Classes with low enrollment 15 business days prior to the scheduled date will be cancelled. Please consider this when booking your travel.

When GE Healthcare cancels a class, tuition will be refunded in full. Alternatively, tuition may be applied to the cost of another class scheduled to take place within 12 months of the original class.

GE Healthcare will not be held responsible for any travel costs incurred due to circumstances beyond our control, such as, but not limited to, hurricanes, tornados, or labor strikes.

In-Resident Training at the GE Healthcare Institute

For your convenience during your in-resident training, there are onsite meal services and condominium accommodations conveniently located across the street from the Healthcare Institute.

Program Managers

CT/PET & Cross Modality:

Joel Jensen Joel.Jensen@ge.com

MR:

Brian Adams Brian.Adams@ge.com

Molecular Imaging & Radiopharmacy:

Stacy Marten Stacy.Marten@ge.com

X-ray:

Dan Pittenger Daniel.Pittenger@ge.com

Note: Most courses have the following special considerations: A functioning laptop computer with a CD-rom reader, network card and a modem card is required for use during this course. The browser on the computer must be IE4 or Netscape 4.5 or higher. Minimum system requirements include 133 MHz Windows 95, NY 4.0 or higher 32 MB of RAM 16-bit color display adapter.

Discovery RX

The Discovery ST course consists of a 5-day in-residence class with labs. It's intended for Service Engineers who are servicing a Discovery ST system. It will equip the Service Engineer with over-all system and PET subsystem theory and hands-on lab activities to address technical service issues for the Discovery ST/STE/VCT/RX systems. Service Engineers will also need to take the appropriate CT course(s).

Course Competencies:

- Understand theory of operation at the subsystem level
- Work safely in the Discovery STE/VCT/RX environment 100% of the time
- Identify required tools and documentation for system service
- Identify the installation steps required for system installation, including seismic install requirements
- Identify replaceable parts, and replacement procedures
- Perform planned maintenance procedures
- Troubleshoot the system to the FRU level
- Correctly identify and operate specific subsystems
- Perform system quality assurance checks and performance verification
- Troubleshoot image quality issues
- Perform system alignments, tuning and calibrations
- Load software (LFC) during install or troubleshooting

Product Number:

R0314PT \$15,345

Delivery Method: Class/Lab

Length of Course: 36 hours

Program Information:

For the most current course information and pricing, please visit us at www.gehealthcare.com/education (under Technical Service Education, click on Diagnostic Imaging: GE).

Note: The associated CT pre-requisite courses must be completed prior to this course.

Pre-Requisites Required:

PET Basic Physics/ Instrumentation	R0306PT	\$3,300
PET Basic Service (Class/Lab)	R0313PT	\$3,990
LightSpeed Pro (HP60, Pro16, RT, BrightSpeed (Class/Lab)	R0026CT	\$16,450

Discovery STE

The Discovery ST course consists of a 5-day in-residence class with labs. It's intended for Service Engineers who are servicing a Discovery ST system. It will equip the Service Engineer with over-all system and PET subsystem theory and hands-on lab activities to address technical service issues for the Discovery ST/STE/VCT/RX systems. Service Engineers will also need to take the appropriate CT course(s).



Course Competencies:

- Understand theory of operation at the subsystem level
- Work safely in the Discovery STE/VCT/RX environment 100% of the time
- Identify required tools and documentation for system service
- Identify the installation steps required for system installation, including seismic install requirements
- Identify replaceable parts, and replacement procedures
- Perform planned maintenance procedures
- Troubleshoot the system to the FRU level
- Correctly identify and operate specific subsystems
- Perform system quality assurance checks and performance verification
- Troubleshoot image quality issues
- Perform system alignments, tuning and calibrations
- Load software (LFC) during install or troubleshooting

Product Number:

R0314PT \$15,345

Delivery Method: Class/Lab

Length of Course: 36 hours

Program Information:

For the most current course information and pricing, please visit us at www.gehealthcare.com/education (under Technical Service Education, click on Diagnostic Imaging: GE).

Note: The associated CT pre-requisite courses must be completed prior to this course.

Pre-Requisites Required:

PET Basic Physics/ Instrumentation	R0306PT	\$3,300
PET Basic Service (Class/Lab)	R0313PT	\$3,990
LightSpeed Pro (HP60, Pro16, RT, BrightSpeed (Class/Lab)	R0026CT	\$16,450

Discovery VCT

The Discovery ST course consists of a 5-day in-residence class with labs. It's intended for Service Engineers who are servicing a Discovery ST system. It will equip the Service Engineer with over-all system and PET subsystem theory and hands-on lab activities to address technical service issues for the Discovery ST/STE/VCT/RX systems. Service Engineers will also need to take the appropriate CT course(s).



Course Competencies:

- Understand theory of operation at the subsystem level
- Work safely in the Discovery STE/VCT/RX environment 100% of the time
- Identify required tools and documentation for system service
- Identify the installation steps required for system installation, including seismic install requirements
- Identify replaceable parts, and replacement procedures
- Perform planned maintenance procedures
- Troubleshoot the system to the FRU level
- Correctly identify and operate specific subsystems
- Perform system quality assurance checks and performance verification
- Troubleshoot image quality issues
- Perform system alignments, tuning and calibrations
- Load software (LFC) during install or troubleshooting

Product Number:

R0315PT

\$15,345

Delivery Method: Class/Lab

Length of Course: 36 hours

Program Information:

For the most current course information and pricing, please visit us at www.gehealthcare.com/education (under Technical Service Education, click on Diagnostic Imaging: GE).

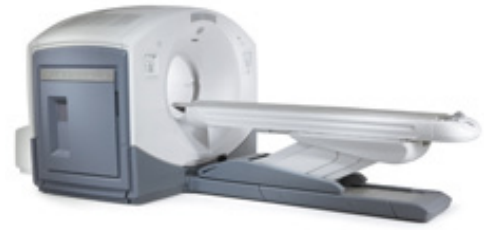
Pre-Requisites Required:

PET Basic Physics/ Instrumentation	R0306PT	\$3,300
PET Basic Service (Class/Lab)	R0313PT	\$3,990
LightSpeed VCT (32/64 Slice) (Class Lab)	R0030CT	\$13,900

Note: The associated CT pre-requisite courses must be completed prior to this course.

Discovery 600/690 Elite & Optima 560

This course consists of a 5-day in-residence class with labs. It is intended for Service Engineers who are servicing a Discovery 600 or Discovery 690 Elite or Optima system. It will equip the Service Engineer with over-all system and PET subsystem theory and hands-on lab activities to address technical service issues for the Discovery 600/690 Elite and Optima 560 systems. Service Engineers will also need to take the appropriate CT course(s).



Course Competencies:

- Understand theory of operation at the subsystem level
- Work safely in the Discovery Discovery 600/690 Elite and Optima 560 environment 100% of the time
- Identify required tools and documentation for system service
- Identify the installation steps required for system installation, including seismic install requirements
- Identify replaceable parts, and replacement procedures
- Perform planned maintenance procedures
- Troubleshoot the system to the FRU level
- Correctly identify and operate specific subsystems
- Perform system quality assurance checks and performance verification
- Troubleshoot image quality issues
- Perform system alignments, tuning and calibrations
- Load software (LFC) during install or troubleshooting

Product Number:

R0309PT

\$15,345

Delivery Method: Class/Lab

Length of Course: 36 hours

Program Information:

For the most current course information and pricing, please visit us at www.gehealthcare.com/education (under Technical Service Education, click on Diagnostic Imaging: GE).

Pre-Requisite Required:

LightSpeed Pro (HP60, Pro 16, RT, BrightSpeed)	R0026CT	\$16,450
PET Basic Service (Class/Lab)	R0313PT	\$3,990

Discovery 690/690 VCT

This course consists of a 5-day in-residence class with labs. It is intended for Service Engineers who are servicing a Discovery 690/690 VCT system. It will equip the Service Engineer with over-all system and PET subsystem theory and hands-on lab activities to address technical service issues for the Discovery 690/690 VCT systems. Service Engineers will also need to take the appropriate CT course(s).



Course Competencies:

- Understand theory of operation at the subsystem level
- Work safely in the Discovery 690/690 VCT environment 100% of the time
- Identify required tools and documentation for system service
- Identify the installation steps required for system installation, including seismic install requirements
- Identify replaceable parts, and replacement procedures
- Perform planned maintenance procedures
- Troubleshoot the system to the FRU level
- Correctly identify and operate specific subsystems
- Perform system quality assurance checks and performance verification
- Troubleshoot image quality issues
- Perform system alignments, tuning and calibrations
- Load software (LFC) during install or troubleshooting

Product Number:

R0309PT

\$15,345

Delivery Method: Class/Lab

Length of Course: 36 hours

Program Information:

For the most current course information and pricing, please visit us at www.gehealthcare.com/education (under Technical Service Education, click on Diagnostic Imaging: GE).

Pre-Requisites Required:

PET Basic Service (Class/Lab)	R0313PT	\$4,115
PET Basic Physics/ Instrumentation (Web)	R0306PT	\$3,300
LightSpeed VCT (32/64 Slice) (Class Lab)	R0030CT	\$13,900

PET Advance

The PET Advance course consists of a 5-day in-residence class with labs. It is intended for Service Engineers who are servicing PET Advance or Discovery LS systems. It will equip the Service Engineer with system and subsystem theory and hands-on lab activities to address technical service issues for the PET Advance family of scanners. Field engineers who are servicing Discovery LS systems also need to take the appropriate CT course(s).

Course Competencies:

- Identify required tools and documentation for system service
- Work safely in the PET Advance NXi environment 100% of the time
- Identify FRU part numbers, and replace common FRUs
- Identify the installation steps and resources required for system installation
- Perform system quality assurance checks and performance verification
- Troubleshoot image quality issues
- Perform system alignments and calibrations
- Isolate system faults to the FRU level using system diagnostics
- Perform planned maintenance procedures
- Load software (LFC) during install or troubleshooting

Product Number:

R0301PT \$12,255

Delivery Method: Class/Lab

Length of Course: 36 hours

Program Information:

For the most current course information and pricing, please visit us at www.gehealthcare.com/education (under Technical Service Education, click on Diagnostic Imaging: GE).

Pre-Requisites Required:

PET Basic Service (Class/Lab)	R0313PT	\$3,990
PET Advance Basic (Web)	R0305PT	\$3,900
PET Basic Physics/ Instrumentation (Web)	R0306PT	\$3,300

LightSpeed Pro (HP60, Pro 16, RT, BrightSpeed) (Class/Lab)

The LightSpeed Pro course is a two-week inresidence class with labs. This course is intended for Service Engineers who don't have prior LightSpeed training. It will equip the Service Engineer with system and subsystem theory and hands-on lab activities to address technical service issues for the newer 4/8/16-slice family of scanners (includes LightSpeed 4/8/16 HP60, Lightspeed 16 Pro, Lightspeed RT16, BrightSpeed 4/8/16).

Course Competencies:

- Perform system quality assurance checks and performance verification
- Troubleshoot image quality issues
- Perform tube change, alignments, calibrations, and image quality checks
- Isolate system faults to the FRU level using system diagnostics
- Perform planned maintenance procedures
- Load software (LFC) during install or troubleshooting

Product Number:

R0026CT \$16,945

Delivery Method: Class/Lab

Length of Course: 76 hours

Program Information:

For the most current course information and pricing, please visit us at www.gehealthcare.com/education (under Technical Service Education, click on Diagnostic Imaging: GE).

Note: The associated CT pre-requisite courses must be completed prior to this course.

LightSpeed Series (4/8/16) (Class/Lab)

The LightSpeed Series course is a 12-day inresidence class with labs. It will equip the Service Engineer with system and subsystem theory and hands-on lab activities to address technical service issues for the original 4/8/16-slice family of scanners (includes LightSpeed 4/8/16 and HiSpeed QXI).

Course Competencies:

- Identify required tools and documentation for system service
- Work safely in the LightSpeed 4/8/16 environment
- Identify FRU part numbers, and replace common FRUs
- Identify the installation steps and resources required for system installation
- Perform system quality assurance checks and performance verification
- Troubleshoot image quality issues
- Perform tube change, alignments, calibrations, and image quality checks
- Isolate system faults to the FRU level using system diagnostics
- Perform planned maintenance procedures
- Load software (LFC) during install or troubleshooting

Product Number:

R0018CT

\$11,325

Delivery Method: Class/Lab**Length of Course:** 36 hours**Program Information:**

For the most current course information and pricing, please visit us at www.gehealthcare.com/education (under Technical Service Education, click on Diagnostic Imaging: GE).

Note: The associated CT pre-requisite courses must be completed prior to this course.

LightSpeed VCT (32/64 Slice) (Class/Lab)

This course consists of a one-week in-residence class with labs. It is a differences class and is intended for Service Engineers who have previous LightSpeed Pro training. It will equip the Service Engineer with system and subsystem theory and hands-on lab activities to address technical service issues for the 32/64-slice family of scanners (includes LightSpeed VCT, LightSpeed VCT XT, LightSpeed VCT Select).

Course Competencies:

- Identify required tools and documentation for system service
- Work safely in the LightSpeed VCT environment
- Identify FRU part numbers, and replace common FRUs
- Identify the installation steps and resources required for system installation
- Perform system quality assurance checks and performance verification
- Troubleshoot image quality issues
- Perform tube change, alignments, calibrations, and image quality checks
- Isolate system faults to the FRU level using system diagnostics
- Perform planned maintenance procedures
- Load software (LFC) during install or troubleshooting

Product Number:

R0030CT

\$14,315

Delivery Method: Class/Lab**Length of Course:** 36 hours**Program Information:**

For the most current course information and pricing, please visit us at www.gehealthcare.com/education (under Technical Service Education, click on Diagnostic Imaging: GE).

Note: The associated CT pre-requisite courses must be completed prior to this course.

PET Advance Basic (Web)

This course is intended to prepare Service Engineers on basic PET Advance theory and subsystem basics before attending the PET Advance class/lab.

Product Number:

R0305PT

\$3,900

Delivery Method: Class/Lab**Length of Course:** 5 hours**Program Information:**

For the most current course information and pricing, please visit us at www.gehealthcare.com/education (under Technical Service Education, click on Diagnostic Imaging: GE).

PET Basic Physics/Instrumentation (Web)

The PET Fundamentals course is designed primarily for service engineers who have little or no familiarity with PET or CT/PET systems. Completion of this course is required for all PET and CT/PET system-level courses.

Course Competencies:

The course teaches general processes, concepts, and equipment used in PET and CT/PET scanning and is comprised of six modules, or mini courses: Principles, Components and Functions, Image Processing and Display, Basic Applications, Quality Assurance, and Safety.

Product Number:

R0306PT \$3,300

Delivery Method: Class/Lab

Length of Course: 7 hours

Program Information:

For the most current course information and pricing, please visit us at www.gehealthcare.com/education (under Technical Service Education, click on Diagnostic Imaging: GE).

PET Basic Service

The PET Basic Service course consists of a 5-day in-residence class with labs. It will equip the Field Engineer with the theory and physics of Positron Emission Tomography and the ability to safely operate and identify several GE PET and PET/CT systems at a basic service level. Completion of this course is required to attend a follow-on PET or PET/CT course. The systems taught in the course include: Discovery LS, Discovery ST, Discovery STE, Discovery VCT, Discovery 600 Series, PET Advance.

Course Competencies:

- Demonstrate safe practices and take appropriate safety measures against possible hazards while working with PET and PET/CT systems.
- Perform radioactive pin source handling and conduct radiation surveys for all of the PET and PET/CT systems.
- Identify the features, functionality, and major components of GE PET and PET/CT systems.
- Operate GE PET and PET/CT systems at the application level for performance evaluation of the system.
- Perform the majority of PM procedures.
- Perform simple non-invasive repairs.

Pre-Requisites Required:

PET Basic Physics/ Instrumentation (Web)	R0306PT	\$3,300
---	---------	---------

Product Number:

R0313PT

\$4,115

Delivery Method: Class/Lab

Length of Course: 36 hours

Program Information:

For the most current course information and pricing, please visit us at www.gehealthcare.com/education (under Technical Service Education, click on Diagnostic Imaging: GE).

Essentials of Healthcare ITSM

This instructor-led class is specifically designed for technical professionals responsible for the installation and support of medical devices and the networks interconnecting them. The class is taught by highly qualified technical trainers and will focus on developing the practical skills needed by a biomedical engineer to interface with networked devices in healthcare today. Extensive labs with plenty of hands-on time allows the student with no previous IT training to gain confidence in this new and exciting arena. The class will build and troubleshoot flat, switched, routed, and wireless networks. Basic computer skills are required.



Intended Audience

- Biomedical equipment technicians
- Biomedical and clinical engineers
- Biomedical and clinical engineering managers
- Medical technology managers
- Hospital IT staff
- Any professional who supports the field of medical technology

Purchase Packages:

Tuition:

R0248PG \$3,850

Tuition & lodging:

R0249PG \$4,775

Tuition, lodging & air:

R0250PG \$5,670*

* US only

Delivery Method: Classroom

Length of Course: 5 days

Course Location:

Please visit www.gehealthcare.com/training for the most current information on dates and locations.

Securing the Healthcare IT EnvironmentSM

This instructor-led class is specifically designed for technical professionals responsible for the secure transport of electronic protected health information across healthcare IT infrastructures. This class is taught by experts in the healthcare IT field and topics include: a global security overview, relevant HIPAA Title II Privacy and Security Rule information, the top 10 HCIT network attacks and ways to prevent them, strategies to mitigate risk, and securing a home network. Hands-on labs include password cracking, configuring biometric identifiers, encryption, port scanning, using network analyzers, software firewall configuration, performing an MD5 Hash, and home router configuration. Students will perform a risk analysis of medical devices using MDS2 documentation and ACCE/ECRI tools. Basic computer skills and TCP/IP network troubleshooting techniques are required.



Intended Audience

- Biomedical equipment technicians
- Biomedical and clinical engineers
- Biomedical and clinical engineering managers
- Medical technology managers
- Hospital IT staff
- Any professional who supports the field of medical technology

Purchase Packages:

Tuition:

R0265PG \$5,000

Tuition & lodging:

R0266PG \$5,925

Tuition, lodging & air:

R0267PG \$6,820*

* US only

Delivery Method: Classroom

Length of Course: 5 days

Course Location:

Please visit www.gehealthcare.com/training for the most current information on dates and locations.

Required IT Skills:

- GE Essentials of Healthcare IT or equivalent

For list of core IT skills, see chart on the Student Information page.

Wireless in the Healthcare IT EnvironmentSM

This vendor-neutral class focuses on the installation, management, and troubleshooting of RF technologies in healthcare today; including WMTS, 802.11, RFID, and cellular communications. Topics include RF and antenna basics, common interference sources in healthcare, remote patient viewing using the Wireless Medical Telemetry Service (WMTS), 802.11 and access point configuration including wireless VLANs, RFID basics, cellular communications, and security requirements for wireless systems. Students receive hands-on training with network analyzers and spectrum analyzers, perform site surveys for WMTS and 802.11, and troubleshoot WMTS antenna systems.



Intended Audience

- Biomedical equipment technicians
- Biomedical and clinical engineers
- Biomedical and clinical engineering managers
- Medical technology managers
- Hospital IT staff
- Any professional who supports the field of medical technology

Purchase Packages:

Tuition:

R0268PG \$5,000

Tuition & lodging:

R0269PG \$5,925

Tuition, lodging & air:

R0270PG \$6,820*

* US only

Delivery Method: Classroom

Length of Course: 5 days

Course Location:

Please visit www.gehealthcare.com/training for the most current information on dates and locations.

Required IT Skills:

- GE Essentials of Healthcare IT or equivalent

For list of core IT skills, see chart on the Student Information page.

Essentials of HL7®

This vendor-neutral class prepares the student to configure and troubleshoot HL7. Focusing on V2.x, students will learn to use the HL7 standard as a reference source as well as vendor conformance documents to aid in interface design. Topics include the structure and encoding of common patient administration, order, results, and billing messages, as well as interface design, data mapping, and vocabulary. Common troubleshooting techniques will be discussed and class concepts will be reinforced through use of the HL7 Messaging Workbench software. This instructor-led course is open to anyone wanting a more in-depth insight into HL7, regardless of equipment choice in the healthcare environment.



Intended Audience

- Biomedical equipment technicians
- Biomedical and clinical engineers
- Biomedical and clinical engineering managers
- Medical technology managers
- Hospital IT staff
- Any professional who supports the field of medical technology

Purchase Packages:

Tuition:

R0344PG \$2,350

Tuition & lodging:

R0345PG \$2,905

Tuition, lodging & air:

R0346PG \$3,800*

* US only

Delivery Method: Classroom

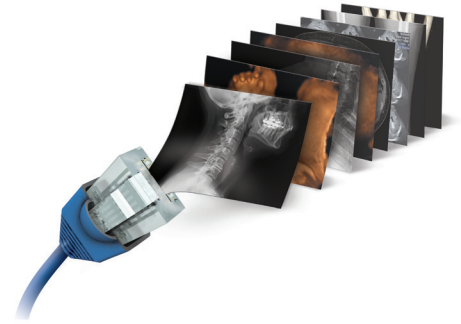
Length of Course: 3 days

Course Location:

Please visit www.gehealthcare.com/training for the most current information on dates and locations.

Essentials of DICOM®

This instructor-led course prepares the participant to become proficient in the installation, maintenance and troubleshooting of DICOM on digital imaging networks. Participants will learn to use the DICOM standard as a reference source, analyze conformance statements for predicting connectivity, configure and use DICOM simulators, and capture and analyze DICOM traffic using freeware tools like the DICOM Validation Toolkit.



Intended Audience

- Biomedical equipment technicians
- Biomedical and clinical engineers
- Biomedical and clinical engineering managers
- Medical technology managers
- Hospital IT staff
- Radiologist
- Any professional who supports the field of medical technology

Purchase Packages:

Tuition:

R0307PG \$3,500

Tuition & lodging:

R0308PG \$4,055

Tuition, lodging & air:

R0309PG \$4,950*

* US only

Delivery Method: Classroom

Length of Course: 3 days

Course Location:

Please visit www.gehealthcare.com/training for the most current information on dates and locations.

Required IT Skills:

- GE Essentials of Healthcare IT or equivalent

For list of core IT skills, see chart on the Student Information page.

© 2011 General Electric Company - All rights reserved.

GE and GE Monogram are trademarks of General Electric Company.

Discovery LS®, LightSpeed®, and LightSpeed VCT® are trademarks of General Electric Company.

DICOM® is the registered trademark of the National Electrical Manufacturers Association for its standards publications relating to digital communications of medical information.

University of Phoenix is a registered trademark of Apollo Group, Inc. in the United States and/or other countries

DeVry is a registered trademark of DeVry Educational Development Corp.

General Electric Company reserves the right to make changes in specification and features shown herein, or discontinue the product described at any time without notice or obligation.

Contact your GE representative for the most current information

GE Healthcare
N16 W22419 Watertown Road
Waukesha, WI 53186
U.S.A.
www.gehealthcare.com

