

Lung VCAR clinical case study

Lung VCAR assist in evaluation of a metastatic CT chest exam

Dr. Marie-Pierre Revel
Radiologist
Hopital Pompidou
Paris, France



History

71-year-old man with history of kidney carcinoma presenting with metastatic Pulmonary lung nodules.

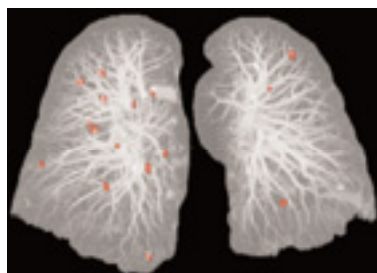
Lung VCAR

Out of 11 known nodules present in the exam confirmed by radiologists, Lung VCAR® highlighted all 11 with 5 false positives using the software's autovisualization feature, Digital Contrast Agent (DCA) and a filter setting of two. These nodules ranged in size from 6mm - 13mm and were classified as a combination of juxta-vascular, juxta-pleural and well circumscribed.

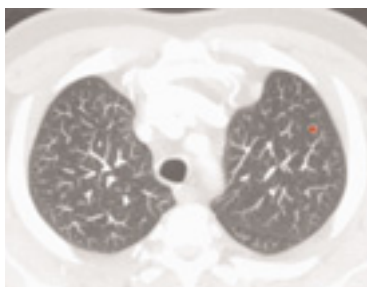
There were no false negatives.

The 5 false positives were easily dismissible due to their location. 3 were on the heart wall and 2 were located on the lung pleura.

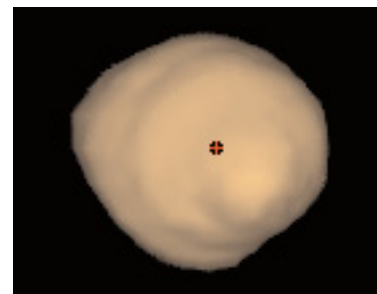
The following images display a subset of the 11 nodules found.



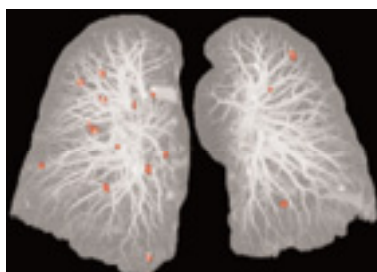
Mapping



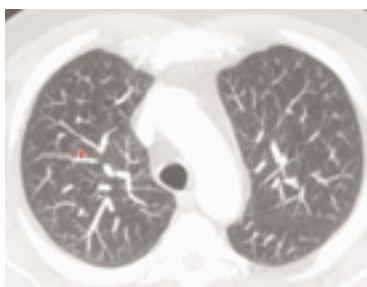
Nodule 1



Nodule 1 Volume



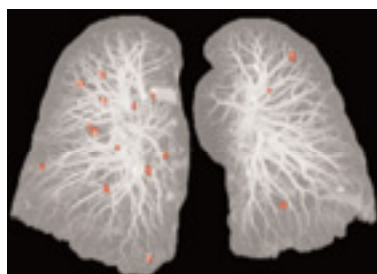
Mapping



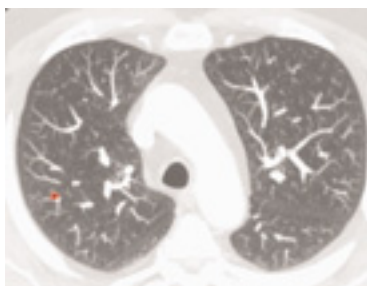
Nodule 2



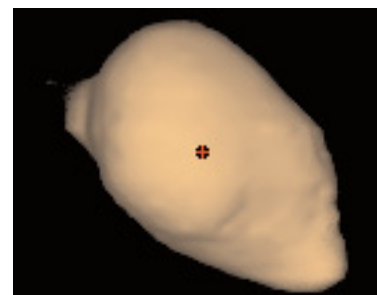
Nodule 2 Volume



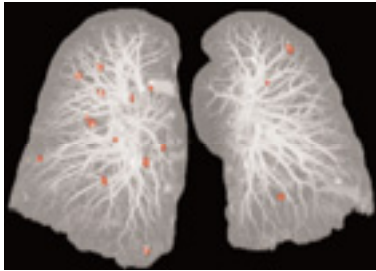
Mapping



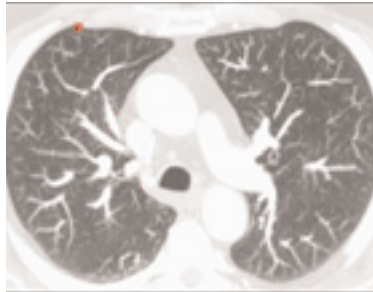
Nodule 3



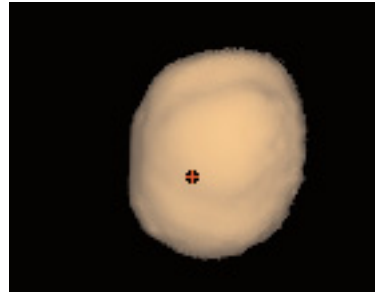
Nodule 3 Volume



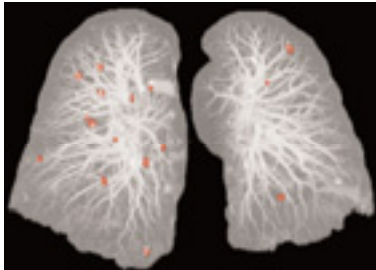
Mapping



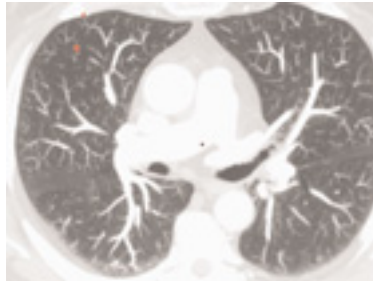
Nodule 4



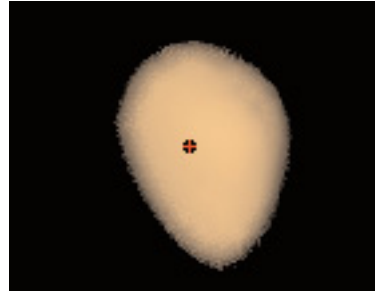
Nodule 4 Volume



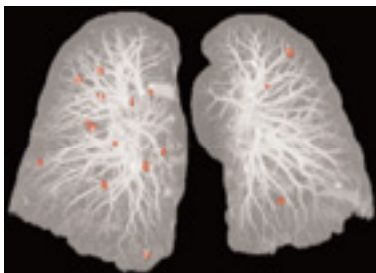
Mapping



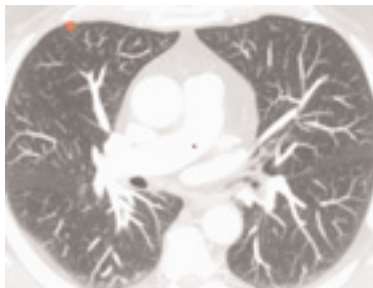
Nodule 5



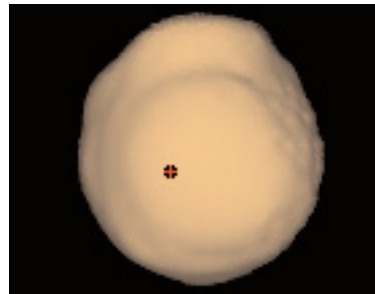
Nodule 5 Volume



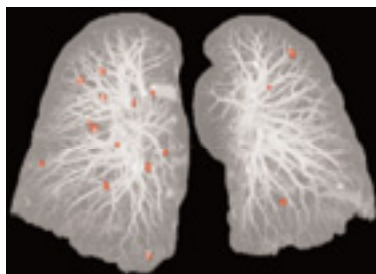
Mapping



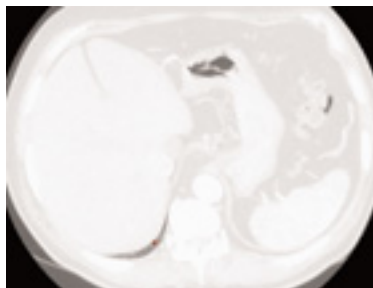
Nodule 6



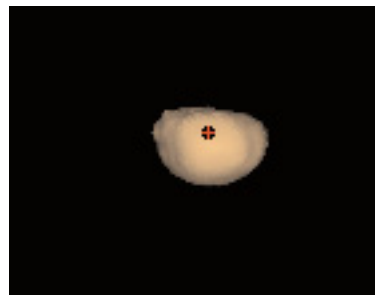
Nodule 6 Volume



Mapping



Nodule 7



Nodule 7 Volume

©2005 General Electric Company – All rights reserved.

General Electric Company reserves the right to make changes in specifications and features shown herein, or discontinue the product described at any time without notice or obligation.

GE, GE Monogram and VCAR™ are trademarks of General Electric Company.

GE Medical Systems, a General Electric company, going to market as GE Healthcare.

For more than 100 years, scientists and industry leaders have relied on General Electric for technology, services and productivity solutions. So no matter what challenges your healthcare system faces – you can always count on GE to help deliver the highest quality services and support.

For details, please contact your GE Healthcare representative today.

GE Healthcare
3000 North Grandview
Waukesha, WI 53188
U.S.A.
www.gehealthcare.com



imagination at work