

GE Healthcare

Sentinelle Vanguard Breast MR Table



**Excellence
Ahead**



Meet the accessory that simplifies breast MR

Outstanding image quality. Exceptional comfort for patients. Enhanced productivity. You get all that and more with the detachable Sentinelle Vanguard Breast MR Auxiliary Table® for your GE Signa® 1.5T scanner. This accessory helps you deliver top-tier breast care and get more performance from your GE Healthcare MR suite.

Be a leader in a fast-growing field

Now you can improve workflow, raise your level of clinical excellence, and lead your market in breast MR – the fastest-growing of all MR studies. As revised guidelines in breast care drive more patients to your facility, excellence in breast MR can differentiate your practice, attract referrals, and help grow your business.

Get confident diagnoses and accurate biopsies

The Sentinelle Vanguard® table helps you produce exceptional images for most women and most breasts. Built-in Variable Coil Geometry™ (VCG) lets you customize the coil for each patient. You can acquire images axially or sagittally with the same clinical confidence. And, with isotropic voxel images, reformat in any plane, even radially, to help visualize the extent of disease along the anatomical structure.

For biopsies, multi-axis grids help you customize positioning and reach targets previously inaccessible with traditional coils. You have 360-degree independent access to each breast, and access to the breast quadrants. This enables biopsies with shorter needle travel and less breast trauma.





Give your patients more comfort

The detachable Vanguard table can make breast MR more pleasant for patients. The table lets you prepare patients in a prep room, away from the sights and sounds of your scanner. The patient-centric design uses supports and padding to help you fit women of many sizes. When patients can comfortably lie still, you get images with fewer motion artifacts, which leads to reduced callbacks.

Improve workflow and enhance productivity

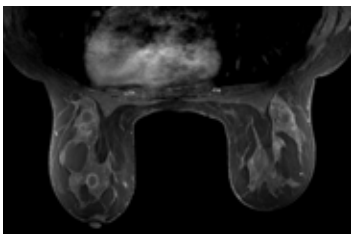
The Vanguard table helps make your MR suite more productive and can increase your throughput. Because you can prepare one patient while you scan another, you can complete possible additional studies per day — significantly increasing volume. Patients will appreciate quicker, more comfortable procedures — and better-satisfied customers can mean more referrals.

Simplify product compatibility and vendor reliability

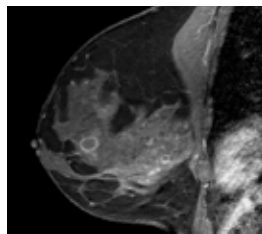
The Sentinelle Vanguard Breast MR Auxiliary Table is one of GE's Accessories & Supplies offerings, so it's engineered for compatibility with GE Healthcare equipment. You can also put everything you need for your Vanguard table and your GE MR system on one simple purchase order. GE also has the resources and tools to help you get maximum benefit from your table right from the start. Plus, partnering with GE Healthcare means you'll also have access to a complete range of equipment financing options.

Take your MR practice to new levels of excellence with the Vanguard table. It's breast MR simplified and part of your total breast MR solution from GE Healthcare.

To Simplify Accessories and learn more about the advantages of the Sentinelle Vanguard Breast MR Auxiliary Table, call 877-248-5355 or visit www.gehealthcare.com/accessories.



Axial VIBRANT Delayed
Matrix 480x384
Slice Thickness: 1.5mm
FOV: 33
VIBRANT



Sagittal Dynamic Post Contrast
Matrix 288x224
Slice Thickness 3mm
FOV: 17
VIBRANT

©2008 General Electric Company.
GE and GE Monogram are trademarks of General Electric Company.

Sentinelle Vanguard Breast MR Auxiliary Table and Vanguard
are registered trademarks of Sentinelle Medical, Inc.

Signa is a registered trademark of General Electric Company.

Variable Coil Geometry is a trademark of Sentinelle Medical Inc.

General Electric Company, doing business as GE Healthcare.

Healthcare Re-imagined

GE is dedicated to helping you transform healthcare delivery by driving critical breakthroughs in biology and technology. Our expertise in medical imaging and information technologies, medical diagnostics, patient monitoring systems, drug discovery, and biopharmaceutical manufacturing technologies is enabling healthcare professionals around the world to discover new ways to predict, diagnose and treat disease earlier. We call this model of care "Early Health." The goal: to help clinicians detect disease earlier, access more information and intervene earlier with more targeted treatments, so they can help their patients live their lives to the fullest. Re-think, Re-discover, Re-invent, Re-imagine.

GE Healthcare
3000 North Grandview
Waukesha, WI 53188
U.S.A.

www.gehealthcare.com



imagination at work