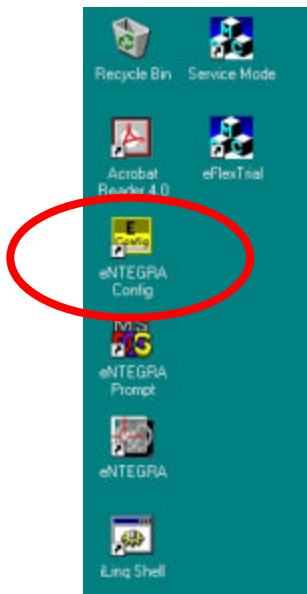


eNTEGRA Release 2 eFlexTrial Procedure

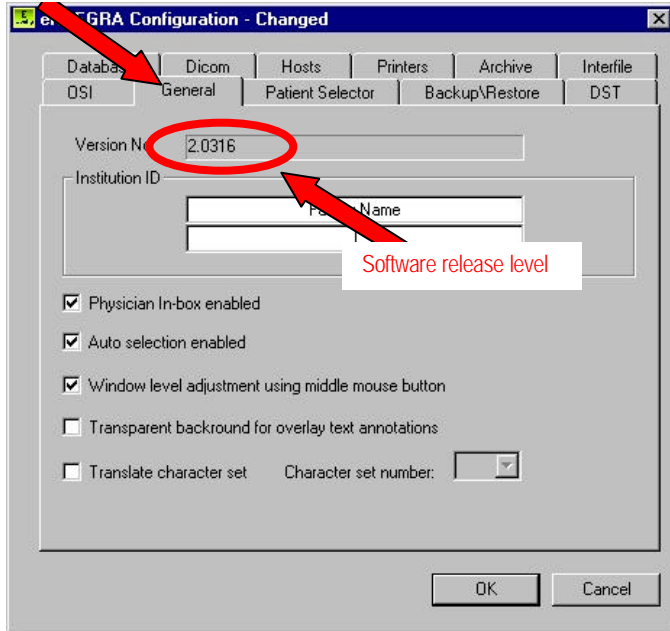
How to determine your Software Version and Host ID:

- 1) To determine the software version for your eNTEGRA, minimize the eNTEGRA application by clicking on the minimize button in the upper right corner of the eNTEGRA screen to access the desktop.
- 2) Double click the “eNTEGRA Config” icon.

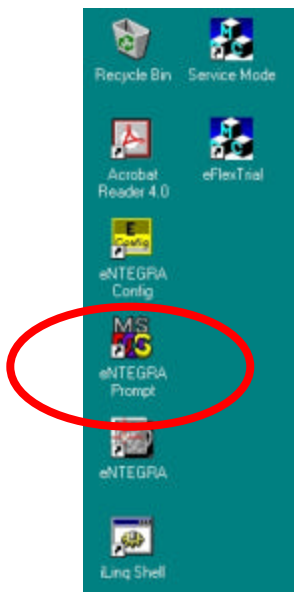


- 3) Select the “general” tab. The software release level is shown in the “Version No.:" box.
- 4) Click “OK” to close dialogue box and return to desktop.

Select "general" tab



5) To determine your **Host ID** (also called the eTEGRA Activator Code, or HASP ID), double click the "eTEGRA Prompt" icon on the Windows desktop.



6) When prompted, type "customer" and press <enter>. The system will return a two-line message:

```
Memo HASP was found  
Hasp ID is xxxxxxxx
```

The 8-digit alphanumeric string contained in the "Hasp ID is xxxxxxxx" is the eTEGRA Host ID required for your eFlexTrial request.

```
MS-DOS eNTEGRA Prompt
Setting environment variables . . .
d:\Einstein\Einstein_Project\exe>customer
MemoHASP was found
Hasp ID s 2522ba77
d:\Einstein\Einstein_Project\exe>
```

4) Close the eNTEGRA Prompt window by clicking on the close button in the upper right corner. Restore the eNTEGRA application.

Request your eFlexTrial license key:

1) At this point, return to the GE Community site :

http://apps.gemedicalsystems.com/geCommunity/nmpet/FlexTrial/entegra/nm_flextrial_home.jsp

with your system **Host ID** to request the appropriate license key. Your license key will be e-mailed to you as a file attachment. The subject line of the e-mail message will read :

License Key file for SysID: **XXXXXXXX** - (where **XXXXXXXX** will be replaced with your Host ID)

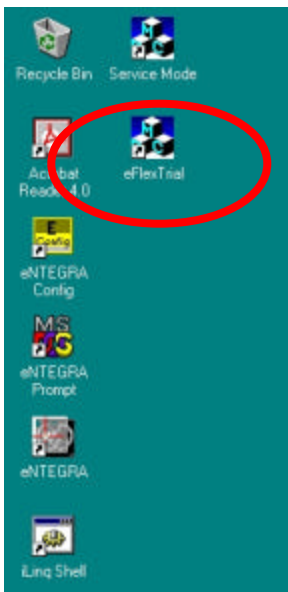
2) Once you have received the e-mail message, save the attached license file to your floppy disk drive and return to this procedure to continue from here.

How to install the license key:

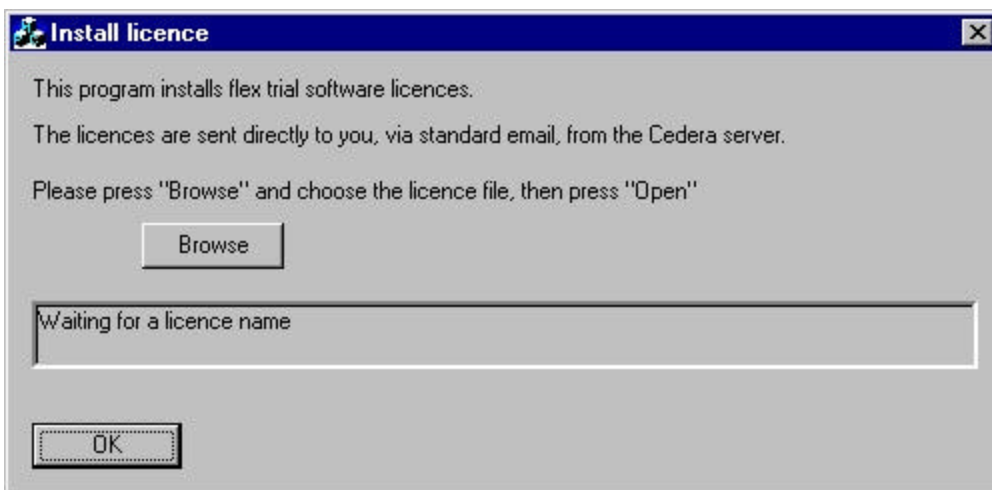
1) To install the trial software license key once you have saved the attached license file to floppy disk, first place the floppy disk into the eNTEGRA drive.

2) Follow these instructions to perform a full system shutdown : with the eNTEGRA application running, click on the close button in the upper right corner of the screen. On the "Shutdown eNTEGRA" window, click the "full" button. Wait approximately five seconds for the eNTEGRA application user interface and the window titled "C:\WINNT\system32\cmd.exe" to close, revealing the Windows desktop.

3) Double click the "eFlexTrial" icon on the Windows desktop.



4) A dialog box will appear which asks you to press the “Browse” button to select the desired license key from the floppy disk.



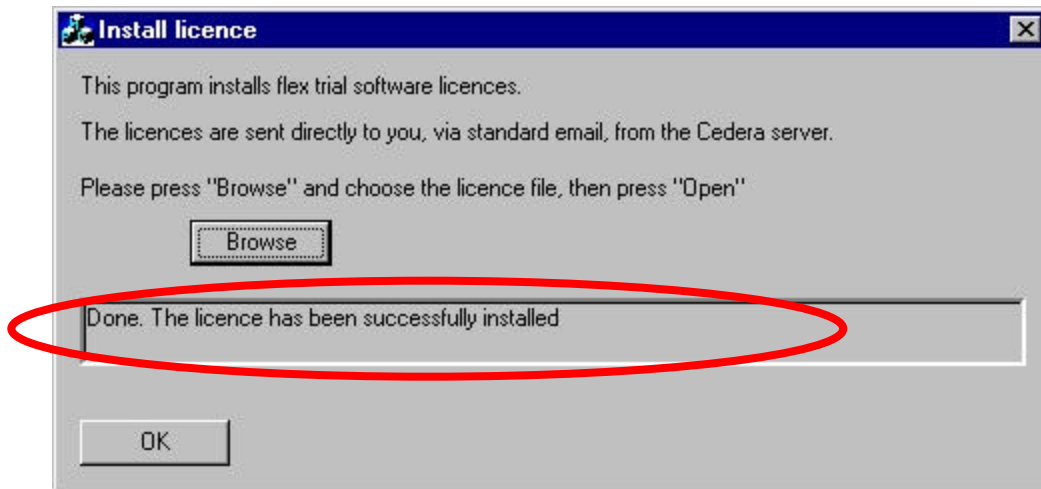
5) All license files stored to that disk will be displayed. (You may need to select “All files” in the “Files of type:” selection box).

6) Double click on the desired license file. Refer to the following table to help you choose the right license key for your desired application.

Application	License key filename
EC Toolbox	Cequal_perfspect3degs_tetrofosmin.dat
QPS	Qps.dat
3D Rendering	Render3d.dat
Aladdin	Qcard.dat
QGS	Qgspect.dat
QuantEM	Quantem.dat

Iterative Recon	Rec.ir.dat
CT/MR DICOM	Ctmrdicomscp.dat
PerfEX	Perfex.dat
Cedars Motion Correction	Csmotcor.dat
Image Registration	Imagereg.dat
Cedars Blood Pool Gated SPECT	Bpgspect.dat
NeuroGam	Neurogam.dat
NeuroMatch	Neuromatch.dat

7) The license file will be installed automatically on your eNTEGRA workstation.



12) Restart the eNTEGRA application by double clicking the eNTEGRA icon on the Windows desktop.

Congratulations! You are now ready to start your 30 day, free software trial.

Included in the e-mail message you received with your license key is a link to on-line user documentation designed to get you started with your new application. Please take the time to review these Quick Step guides prior to use of the software. In addition, full user documentation is available on-line from your eNTEGRA workstation by clicking the "Help" button.

At any time during the 30 day trial period, you may purchase this application from the GE Community web site at:
http://apps.gemedicalsystems.com/geCommunity/nmpet/FlexTrial/entegra2/nm_flextrial_home.jsp
and selecting the "buy now" button. Should you require additional assistance or information, you'll find local telephone numbers on the GE Community web site as well.

At the end of the 30 day trial period, your license will automatically expire.