

# 3Plane Graphic RX

## QuickStep Guide

**3 Plane GRx**

Erase Group  
Erase All  
Reset Center

Tracker  
Report Cursor  
Keep W/L  
Loc Ref Lines

Auto Update  
W/L Pan Zoom  
FOV 1.0  
Phase FOV 0.75  
Freq DIR A/P

FOV 16  
Slice Thickness 3.0  
Spacing 1.5

Accept

# Slices 27

**Reduced Phase FOV**

**Add Handles**

**Rotate Handle**

**Accelerator Line**

With this software release there has been a major change to the Graphic Rx screen, allowing you to see your graphic prescription in all 3 planes and do multiple obliques in 1 prescription. The window now opens displaying 3 images at all times, a 3 Plane Localizer being the default.

**What you need to know to get started:****Images displayed**

- The last 3 Plane Localizer scanned is always loaded. Placing the center slice from each plane in each of the view ports.
- If there is no 3 Plane localizer the last compatible series scanned is loaded. The center slice is placed in the top right hand view port.

**To change an image**

- Click on the image you want to change, this places a yellow border around the image making it the active window.
  - Then click on the “- or +” buttons to move through the images.
  - Type the image number on the accelerator line.
  - Click on select image and select an image from the list.

**To deposit slices**

- **To deposit any group of slices (even the 1<sup>st</sup>) hold down the “shift key” and left click with the mouse.**
- Slices can be added from either end of the group.
- The active slice group is blue, inactive groups are yellow.
- Slices can be deposited on any of the images.
- Once the slices are deposited they can be manipulated on any of the windows.

**Phase FOV**

- Slice lines lengths show any changes in the Phase FOV.

**SAT bands**

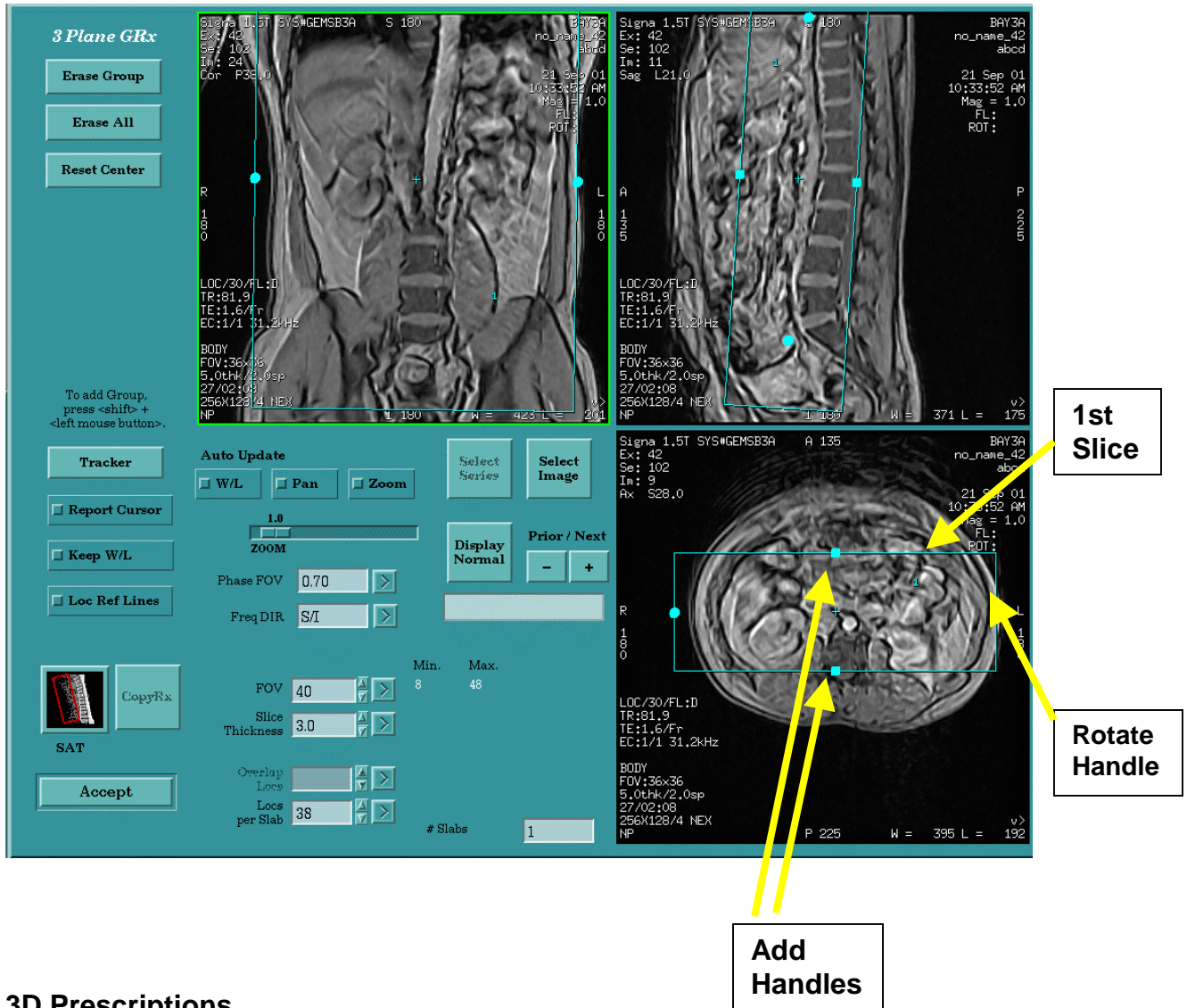
- SAT bands have to be deposited on the SAT screen, but show up on the Grx screen and can be manipulated there if needed.
- **To deposit a SAT band, click on the “L,R,A,P,S or I” then hold down the “shift key” and left mouse click.**
- Active SAT bands are red and inactive SAT bands are yellow.

**Reset Center**

- This button is a new addition for most users, it enables you to deposit slices on one image then move through the slice and select another image as the center.
- For example if scanning a shoulder, deposit the slices on the slice where you see the supraspinatus then move to the slice where you see the joint and click on “Reset Center” this moves the Center of the FOV to that slice and maintains the angle.

**Copy Paste**

- Copy paste always calls up the images that were originally used to set up the prescription.



### 3D Prescriptions

- Slabs can be added for either side.
- The number in the box is placed closest to the first slice in the volume.

For further details refer to the [Signa LX 9.0 New Features Manual](#).

**Note:** If you've already received the BodyPak option on your system and you have Signa Select Software (ASPII), the option was reloaded as part of the installation of your upgrade. If you have the BodyPak Option and have 8.3M5 Software, you will need to download the BodyPak option again. The download will only take a couple of minutes.