

# Vivid *i* and Vivid *q* cardiovascular ultrasound


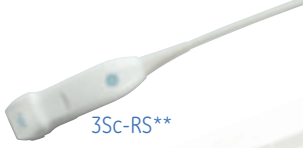





## Transducer guide



### Comprehensive cardiovascular scanning.

The Vivid<sup>+</sup> *i* and Vivid *q* feature a wide range of applications that help increase each system's versatility. Each system's transducers feature a ComfortScan design and the miniaturized RS connector, with ergonomics that help maximize ease of use and patient comfort. A lightweight transducer cable minimizes strain for the user, facilitating transducer placement.

### Sector

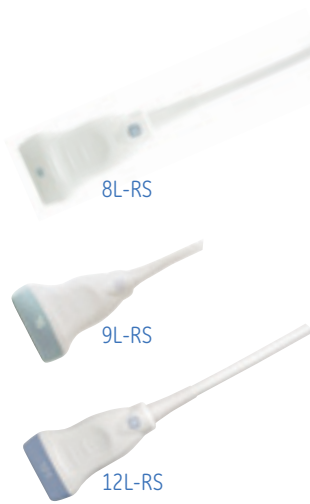
	Cat #	Main Applications	Description	Footprint	Biopsy Guide	Scanner Frequency Ranges	Field of View	Depth of Field
	H4000PD	Adult Cardiac, Abdomen	Phased Array	19 x 27 mm	Multi-angle, disposable, with a reusable bracket	1.5 - 3.6 MHz	90°	30 cm
	H45041DL	Adult Cardiac, Abdomen	Phased Array	18 x 24 mm	Multi-angle, disposable, with a reusable bracket	1.3 - 4.0 MHz	90°	30 cm
	H40452LH	Adult Cardiac, Abdomen	Phased Array	20 x 28 mm	Multi-angle, disposable, with a reusable bracket	1.5 - 3.6 MHz	90°	30 cm
	H45021RP	Pediatric Cardiac, Neonatal Head	Phased Array	17 x 23 mm		2.7 - 8.0 MHz	90°	16 cm
	H4000PE	Pediatric Cardiac, Neonatal Head	Phased Array	17 x 24 mm		3.5 - 8.0 MHz	90°	16 cm
	H4000PF	Pediatric Cardiac, Neonatal Head	Phased Array	14 x 21 mm		4.5 - 11.5 MHz	90°	12 cm
	H44901AB	Pediatric Cardiac, Neonatal Head	Phased Array	13 x 18 mm		5.0 - 11.0 MHz	90°	12 cm

# Transesophageal



Cat #	Main Applications	Description	Footprint	Biopsy Guide	Scanner Frequency Ranges	Field of View	Depth of Field
H45551ZE	Adult Cardiac	Multi-plane Phased Array TEE	12 x 14 mm with length of 45 mm		2.9 - 8.0 MHz	90°	20 cm
H45531YM	Pediatric Cardiac	Multi-plane Phased Array TEE	7.5 x 10.7 mm with length of 37.5 mm		4.0 - 10.0 MHz	90°	14 cm

# Linear



Cat #	Main Applications	Description	Footprint	Biopsy Guide	Scanner Frequency Ranges	Field of View	Depth of Field
H40402LT	Vascular, Small Parts, Thyroid	Linear Array	14 x 48 mm	Multi-angle, disposable, with a reusable bracket	4.0 - 13.0 MHz	38 mm	10 cm
H40442LL	Vascular, Small Parts, Thyroid	Linear Array	14 x 53 mm	Multi-angle, disposable, with a reusable bracket	3.1 - 10.0 MHz	44 mm	12 cm
H40402LY	Vascular, Small Parts, Thyroid	Linear Array	14 x 47 mm	Multi-angle, disposable, with a reusable bracket	6.0 - 13.0 MHz	38 mm	10 cm

# ICE

AcuNav 8

AcuNav 10

SoundStar 10

SoundStar eco

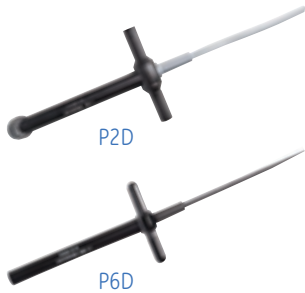
Cat #	Main Applications	Description	Footprint	Biopsy Guide	Scanner Frequency Ranges	Field of View	Depth of Field
†	Intracardiac	Catheter	8 Fr diameter		4.5 - 11.5 MHz	90°	16 cm
†	Intracardiac	Catheter	10 Fr diameter		4.5 - 11.5 MHz	90°	16 cm
†	Intracardiac	Catheter	10 Fr diameter		4.5 - 11.5 MHz	90°	16 cm
†	Intracardiac	Catheter	10 Fr diameter		4.5 - 11.5 MHz	90°	16 cm

# Convex



Cat #	Main Applications	Description	Footprint	Biopsy Guide	Scanner Frequency Ranges	Field of View	Depth of Field
H4000SR	Abdomen, Ob/Gyn	Curved Array	17 x 65 mm	Multi-angle disposable, with a reusable bracket	1.8 - 6.0 MHz	58°	30 cm
H40402LS	Pediatric Abdomen, Neonatal Head	Curved Array	12 x 21 mm		4.0 - 11.0 MHz	128°	14 cm

# Doppler



Cat #	Main Applications	Description	Footprint	Biopsy Guide	Scanner Frequency Ranges	Field of View	Depth of Field
H4830JE	Cardiac	Pencil	16 mm		2.0 MHz	N/A	N/A
H4830JG	Vascular	Pencil	8 mm		6.0 MHz	N/A	N/A

# Special



Cat #	Main Applications	Description	Footprint	Biopsy Guide	Scanner Frequency Ranges	Field of View	Depth of Field
H40402LN	Obstetrics, Gynecology	Curved Array	23 x 23 mm	Single-angle disposable	4.0 - 11.0 MHz	128°	14 cm
H40402LW	Intra Operative (non cardiac), Vascular, Small Parts	Linear Array	14 x 33 mm		5.0 - 13.0 MHz	25 mm	6 cm

		Probes																						
		3S-RS**	3Sc-RS**	M4S-RS*	6S-RS	7S-RS	10S-RS	12S-RS	6Tc-RS	9T-RS	8L-RS	9L-RS	12L-RS	AcuNav 8	AcuNav 10	SoundStar 10	SoundStar eco	4C-RS	8C-RS	P2D	P6D	e8C-RS	i12L-RS	
Modes	2D																							
	Harmonics																							
	Color																							
	M-Mode																							
	PW Doppler																							
	CW Doppler																							
	TVI/TT***																							

\* Only Vq

\*\* Only Vi

\*\*\* SI/SRI and TSI are also available, but only on the Vivid q

Probes

Applications	Probes																						
	3S-RS**	3Sc-RS**	M4S-RS*	6S-RS	7S-RS	10S-RS	12S-RS	6Tc-RS	9T-RS	8L-RS	9L-RS	12L-RS	AcuNav 8	AcuNav 10	SoundStar 10	SoundStar eco	4C-RS	8C-RS	P2D	P6D	e8C-RS	112L-RS	
Abdominal																							
Abdominal Pediatric																							
Aorto-Iliac																							
Breast																							
Cardiac																							
Carotid																							
Coronary																							
Exercise (Stress)																							
FAST																							
FATE																							
Fetal Heart																							
HFR (High Frame rate)																							
Hip Joint																							
LEA																							
LEV																							
Lung																							
LVO Contrast																							
LVO Stress																							
Musculoskeletal																							
Neonatal Head																							
Nerves																							
Obstetrics																							
Pediatric																							
Pelvic																							
Pharm Stress																							
Renal																							
Small Organs																							
Small Parts																							
Superficial																							
Transcranial																							
Thyroid																							
UEA																							
UEV																							
Vertebral																							
ICE																							

\* Only Vivid S6

\*\* Only Vivid S5

Note: Some applications depend on the availability of certain options.

Note: Some of the probes, options or features described in this data sheet may NOT be available for sale in all countries.

GE Healthcare  
 9900 Innovation Drive  
 Wauwatosa, WI 53226  
 U.S.A.  
[www.gehealthcare.com](http://www.gehealthcare.com)

©2012 General Electric Company – All rights reserved.

General Electric Company reserves the right to make changes in specifications and features shown herein, or discontinue the product described at any time without notice or obligation.

GE and GE Monogram are trademarks of General Electric Company.

ACUSON Acu Vav™ is a trademark of Siemens AG.

GE Medical Systems Ultrasound & Primary Care Diagnostics, LLC, a General Electric Company, doing business as GE Healthcare.

‡Trademark of General Electric Company.



imagination at work