

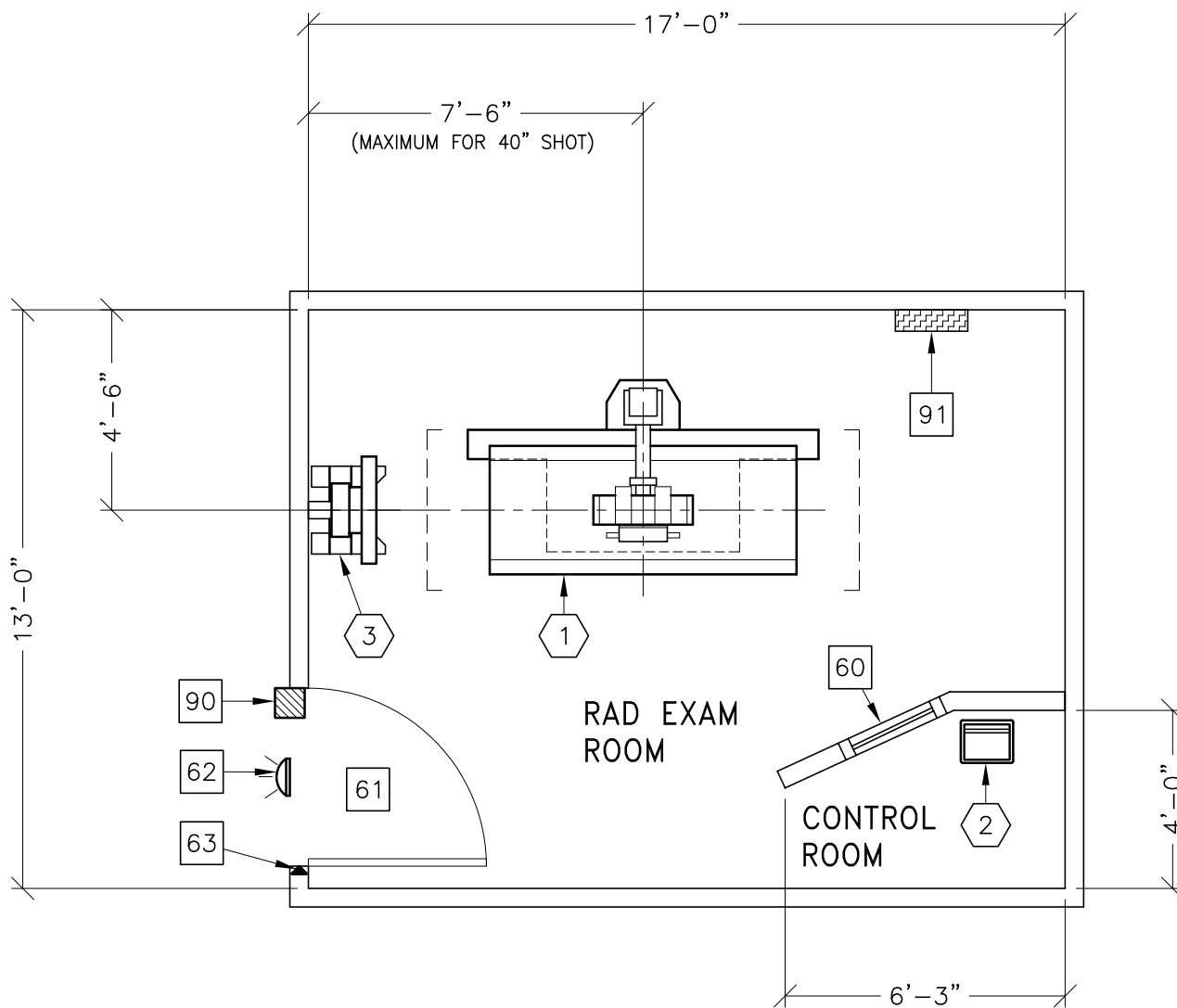


# SILHOUETTE VR SYSTEM

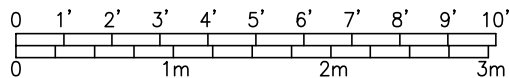
THE FOLLOWING SHOTS ARE NOT AVAILABLE IN THIS LAYOUT:

---

180° OFF-TABLE IMAGING



ROOM DIMENSIONS	LENGTH & WIDTH	CEILING HEIGHT
MINIMUM:	16'-0" x 11'-0" [4.87m x 3.35m]	8'-6" [2.6m]



SEE APPENDIX "A" FOR POWER SPECIFICATIONS

ROOM PLAN LOCATED ON PAGE 1-120

ITEM	QUANTITY	ITEM DESCRIPTION	WEIGHT	HEAT OUTPUT
①	1	SILHOUETTE VR TABLE WITH TUBESTAND	972 lbs	4822 btu
②	1	SILHOUETTE VR CONTROL CONSOLE ON PEDESTAL	33 lbs	98 btu
③	1	SILHOUETTE VR WALL STAND	264 lbs	

\*\*\*\*\*  
**CUSTOMER/CONTRACTOR SUPPLIED AND INSTALLED ITEMS**  
 \*\*\*\*\*

- 60 CONTROL WALL, 7 FT. HIGH WITH LEAD GLASS VIEWING WINDOW.
- 61 MINIMUM DOOR OPENING FOR EQUIPMENT DELIVERY IS 48 IN. W x 80 IN. H [1219mm x 2032mm], CONTINGENT ON A 78 IN. [1981mm] CORRIDOR WIDTH
- 62 X-RAY ON WARNING LIGHT - AVAILABLE FROM GE SUPPLY CALL: 800-200-9760  
 GE CAT. NO. WXIABWW-OF-XIU
- 63 DOOR LIMIT SWITCH  
 <NEEDED ONLY IF REQUIRED BY STATE/LOCAL CODES>
- 90 X-RAY ROOM WARNING LIGHT CONTROL PANEL  
 REFERENCE JUNCTION POINT 'XRLC' ON SHEET 'E1'  
 FOR DETAILED DESCRIPTION -E4502RL FOR WARNING LIGHT CONTROL ONLY.
- 91 MAIN DISCONNECT, REFERENCE JUNCTION POINT 'A' ON SHEET E1 FOR DETAILED DESCRIPTION.  
 CAT. NO. E4502ST OR WITH AUTO RESTART E4502RP.  
 <20 W x 48 H x 6.68 in. D>

ENVIRONMENT

Ambient Operation Temperature: 55-75° (F)  
 Allowable Temperature Change: 15° (F) per hour  
 Humidity: 20-80 percent non condensing  
 Allowable Humidity Change: 10 percent per hour  
 Max - Altitude: 8000 ft. above sea level