



GE HealthCare

# X-ray

Imaging Accessories & Supplies



Reliable



Compatible



One-Stop Shop

# How to Order



Available 24/7, GE HealthCare Service Shop makes ordering supplies online fast and easy.

- Search real-time inventory of compatible, OEM products
- Take advantage of Auto Reorder for parts you buy regularly
- Batch order multiple items at once with Quick Order
- Get instant order and tracking confirmations
- Pay by PO or credit card or integrate your purchasing system

Visit GE HealthCare Service Shop to register.

1. Visit GE HealthCare Service Shop, navigating to the registration link in the upper left-hand corner of the page.
2. Give us your account details. Pro tip: Provide your customer account number for expedited registration.
3. A welcome message will come to you through the email you provide. Start shopping!

Register now at [ServiceShop.GEHealthcare.com](http://ServiceShop.GEHealthcare.com)

## Other ways to order:

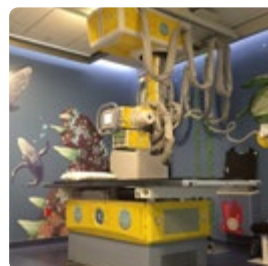
Phone: (866) 281-7545 Options 1, 2, 1, 2

Fax: (877) 279-6990

Email: [gehcaccessorysales@ge.com](mailto:gehcaccessorysales@ge.com)

EDI: Free – contact us for details

Hours: 7AM – 6PM (CST)



# Table of Contents

## Mobile X-ray Systems

Adventure Series for Mobile X-ray ..... XR 4 ▶

Sterile Drapes ..... XR 4 ▶

Mobile X-ray Accessories ..... XR 5 ▶

## Radiography

Misc Accessories ..... XR 7 ▶

Furniture ..... XR 7 ▶

## X-ray

Power Solutions ..... XR 8 ▶

Adventure Series ..... XR 14 ▶

# Adventure Series for Mobile X-ray

## Star Catcher Patient Experience for the Navigate Mobile X-ray System

When young patients feel anxious, they often have difficulty lying still during imaging procedures, which can affect the completion of the scan.

With the Adventure Series program, we can engage children to help improve their coping skills and reduce anxiety levels, leading to much better cooperation during the procedure.

Put children first with the GE Adventure Series, an experience designed to make imaging more inviting for pediatric patients. See pg. 18-24 for more information.



E1500RS

Cat#	Description	Warranty
E1500RS	GE Adventure Series, Starcatcher for AMX™ Navigate Mobile X-ray	Y

# Sterile Drapes

## AMX Mobile System Drapes

GE HealthCare’s sterile, disposable drape solution helps protect your amx mobile systems. With a greater focus on convenience and productivity for your busy X-ray department, these drapes can be applied by a single technologist. Choose from either the tube or detector drape option.



E7009HA

Cat#	Description	Packaging	Warranty
E7009HA	Sterile Protective Drapes – Tube Drape (74 in x 42 in)	20/Box	H
E7009HB	Sterile Protective Drapes – Detector Drape (32 in x 21 in)	20/Box	H

# Mobile X-ray Accessories

## Mobile Detector Holder for Flashpad HD Detector

- Compatible with the GE FlashPad® HD detector
- A stable platform enabling images to be taken at any angle
- Counterbalanced vertical movement from floor level to 50.8" (129 cm) high
- FlashPad HD (or a cassette) can overhang the table or trolley up to 24.4" (62 cm)
- Strong and compact design
- Large, quick-locking castor wheels
- Size: 70.5 in (H) x 26.4 in (D) x 24 in (W) (179 cm (H) x 67 cm (D) x 61 cm (W))
- Weight: 121 lbs (55 kg)



E06731BL

Cat#	Description	Warranty
E06731BL	Mobile Detector Holder for Flashpad HD Detector	C
<b>Compatibility:</b> Flashpad HD		

**Mobile Adjustable Detector Holder**

The height-adjustable mobile detector stand is used in applications with a digital radiography (DR) detector.†

A removable clear acrylic panel and securing straps maximize patient positioning during the procedure.

- Electric height adjustment accommodates patients of various sizes
- Straps and a removable clear acrylic panel improve the accuracy of patient positioning
- Independent detector and grid holders allow for insertion and removal of detector without removing the grid
- Detector and grid can be rotated 90° in either portrait or landscape
- Small footprint with large 4" wheels provides for easy movement from room to room with detector and grid in place
- Four locking casters secure placement of the stand
- Constructed using high-grade steel and aluminum allowing the unit to be cleaned and disinfected using standard medical cleaning agents

† Detector and grids not included.



E6313DA

Cat#	Description	Warranty
E6313DA	Mobile Vertical Detector Holder for Flashpad Digital Detector (120V, 60Hz) – not compatible with Flashpad HD	Y
<b>Compatibility:</b> Flashpad		

**Flexi-Holder II Detector and Cassette Holder**

- The Flexi-Holder features an extra wide base for increased stability, allowing accurate radiographs to be taken from virtually any angle from floor level to 71 in + (180 cm) high
- Dimensions – 19 in (L) x 22 in (W) x 75 in (H)
- Weight – 110 lbs (50 kg)
- Teflon-coated bracket securely holds digital detector
- Helps eliminate retakes caused by improper cassette positioning
- Permits smoother scheduling and exceptional radiographs, saving film, time and labor for cost-effective radiographic procedures
- Minimizes patient assistance and discomfort in positioning
- Accepts most cassettes and does not obscure cassette film area
- Exclusive GE design



E6314J

Cat#	Description	Warranty
E6314J	Flexi-Holder Detector/Cassette Holder – not compatible with Flashpad HD	Y
<b>Compatibility:</b> Flashpad		



## Misc. Accessories

### Single Hand Loading Cassette Tray

- The Single Hand Loading Cassette Tray with Automatic Size Sensing is designed for use in radiographic tables and vertical bucky stands
- Sends a signal to the collimator indicating whether a film cassette is in place; if so, the cassette size is indicated
- Utilizes a spring-action clamping mechanism and cassette support tabs that allow the operator to insert and remove film cassettes with one hand
- Validated for use with both the Proteus and Precision 500D systems



E6314M

Cat#	Description	Warranty
E6314M	SHL Cassette Tray	L
<b>Compatibility:</b> Proteus, Precision 500D		

## Furniture

### Non-Magnetic Foot Stool

- Non-Magnetic Foot Stool works in MR or X-ray environments and offers patient stability
- Stainless steel construction
- Weight – approximately 30 lbs



E8806AB

Cat#	Description	Warranty
E8806AB	Non-Magnetic Foot Stool with Handrail	H

### Physician Mobile Armchair

- Padded arms
- Charcoal gray
- Adjusts from 17.7 to 21.7 in (45 to 55 cm)
- Weight 31 lb (14 kg)
- Chair contains some ferro-magnetic material
- Not safe for use in an MRI Suite's Zone IV, use in control room only



E80331BE

Cat#	Description	Warranty
E80331BE	Physician Mobile Armchair	H

# Uninterruptible Power Supplies

## Uninterruptible Power Supplies (UPS)

- Helps provide reliable, clean, consistent power for Diagnostic Imaging and PACS systems
- Helps to eliminate power anomalies (noise, transients, over and undervoltage), which could damage the system's sensitive computer components
- Enables the DI system to complete scanning after the loss of supply power and allows for the saving of valuable data and orderly system shutdown
- GE HealthCare tests and approves the UPSs listed in this catalog for compatibility with GE HealthCare Diagnostic imaging systems. All solutions are On-Line Double Conversion UPS.
- Configurations are available to support multi-modalities or even complete departments



E4502FD

Cat#	Description	Warranty
<b>Rad/R&amp;F UPS</b>		
E4502DC	ABB 150 kW UPS (non-seismic)	O
E4502DD	ABB 250 kW UPS (non-seismic)	O
E4502WA	Eaton 150 kW 93PM (non-seismic) UPS, non-upgradeable, 6.1 min runtime	O
E4502WB	Eaton 150 kW 93PM (seismic) UPS, non-upgradeable, 6.1 min runtime	O
E4504FQ	Eaton 0.7 kVA Partial System UPS	O



See Power Quality Compatibility Guide on page XR 12

# Transformer

## Transformer

- Meets or exceeds DOE 2016, NEMA TP-1, NEMA premium and DOD CSL-3 efficiency requirements
- Qualified to the seismic requirements of ASCE7.05, IEEE-693-2005 and IBC-2006
- UL Listed



Cat#	Description	Warranty
E4500TB	112.5 kVA Step Up Transformer – 208-480Y/277 Volt	Y



# Dynamic Sag Corrector

## Dynamic Sag Corrector (DySC)

- Corrects for voltage sags at the system, department or facility level
- DySC is optimized for fast sag detection and response time (voltage detect time of 1 ms; sags are corrected with a peak voltage response time of 1.5 ms)
- A green power solution at > 99% energy efficiency, the DySC has no batteries and over time can offer lower cost of maintenance
- Smaller footprint and lighter weight than comparable (kVA) UPS systems
- Service Contracts offered by GE HealthCare



E4505SM

Cat#	Description	Warranty
E4505SJ	200 Amp (166 kVA) ProDySC Dynamic Sag Corrector (without installation)	Y
E4505SM	200 Amp GT (166 kVA) ProDySC Dynamic Sag Corrector (without installation)	Y
E4505SK	400 Amp (333 kVA) ProDySC Dynamic Sag Corrector (without installation)	Y

# Main Disconnect Panels


## Main Disconnect Panels

- Main Disconnect Panels provide emergency shut down, undervoltage protection, overcurrent protection, OSHA lockout tag provisions, and serves as a local disconnect for the GE HealthCare Diagnostic Imaging System.
- Helps reduce installation time by providing a single-point power connection, eliminating the need to mount and wire a number of individual components
- Standardized design and testing helps ensure high product quality and system reliability
- UL and cUL listed for compliance with National Electric Code
- Surface or semi-flush mounting
- Please consult your GE HealthCare Field Engineer to determine if this is the appropriate product for your needs before purchasing



E46001BA

Cat#	Description	Warranty
<b>RAD/R&amp;F Main Disconnect Panels</b>		
E4502RP	25 KAIC X-ray Main Power Disconnect Panel – 90 Amp, Auto-Restart	Y
E4502ST	25 KAIC X-ray Main Power Disconnect Panel – 80 Amp, 480V/208V	Y
E4502TA	Main Disconnect Panel for Definium XR/f - UL 150A, 50KW, 208V, 60Hz, single phase with externally mounted 100 kVA step-up transformer	Y
E4502TB	Main Disconnect Panel for Definium XR/f - UL 150A, 50KW, 240V, 60Hz, single phase	Y
E4502TC	Main Disconnect Panel for Definium XR/f - UL 40A, 50KW, 480V, 60Hz, 3 phase	Y
E4502TD	Main Disconnect Panel for Definium XR/f - UL 50A, 65KW, 480V, 60Hz, 3 phase	Y
E4502TE	Main Disconnect Panel for Definium XR/f - UL 60A, 80KW, 480V, 60Hz, 3 phase	Y

 See Power Quality Compatibility Guide on page XR 12

# AC Lighting Controllers

## AC Lighting Controllers

- “X-ray in Use” warning and room lighting control panel provide a low voltage interface between the “X-ray in Use” warning lights, interior room general lighting systems and the X-ray system
- Convenient, push on/off pre-wired footswitch for control of room general lighting
- Enhances servicing safety by the use of a low voltage interface circuit between the imaging system and the line voltage lighting system



E4502SS

Cat#	Description	Warranty
E4502SS	X-ray Warning and Room Lighting Control Panel (X-ray, Vascular, R&F)	Y
E4502RL	X-ray Warning Light Control Panel (CT, MR, X-ray)	Y



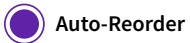
See Power Quality Compatibility Guide on page XR 12

# Compatibility Guide

X-ray Systems	Full UPS Cat #	Full UPS Description	Partial UPS Cat #	Partial UPS Description	Maintenance Bypass Panel	Main Disconnect Panel	AC Lighting Controller
Precision 500D, Precision RXi, Precision MPi, Proteus XQi, Proteus XRd-2X*, Proteus XRa, Definium 8000*, Definium 6000*	E4502DC E4502DD E4502WA E4502WB	150 kW UPS (non-seismic) 250 kW UPS (non-seismic) 150 kW UPS (non-seismic) 150 kW (seismic OHSPD)	*E4504FQ	0.7kVA Partial System UPS (* indicates approval for use with these systems)	E4502WA/WB configurations include their own MBP and a wall-mounted load distribution panel. E4502DC/DD configuration includes its own wall-mounted MBP.	E4502RP - 90 Amp, Auto Restart E4502ST- 80 Amp	E4502SS E4502RL
Brivo XR385	E4502DC E4502DD E4502WA E4502WB	150 kW UPS (non-seismic) 250 kW UPS (non-seismic) 150 kW UPS (non-seismic) 150 kW (seismic OHSPD)	E4504FQ	0.7kVA Partial System UPS	E4502WA/WB configurations include their own MBP and a wall-mounted load distribution panel. E4502DC/DD configuration includes its own wall-mounted MBP.	E4502RP - 90 Amp, Auto Restart E4502ST - 80 Amp	E4502SS E4502RL
Brivo XR385 XR/f	E4502DC E4502DD E4502WA E4502WB	150 kW UPS (non-seismic) 250 kW UPS (non-seismic) 150 kW UPS (non-seismic) 150 kW (seismic OHSPD)			E4502WA/WB configurations include their own MBP and a wall-mounted load distribution panel. E4502DC/DD configuration includes its own wall-mounted MBP.	E4502TA - UL 150A, 50KW, 208V, 60Hz, single phase with externally mounted 100 kVA step-up transformer, E4502TB - UL 150A, 50KW, 240V, 60Hz, single phase, E4502TC - UL 40A, 50KW, 480V, 60Hz, 3 phase, E4502TD - UL 50A, 65KW, 480V, 60Hz, 3 phase, E4502TE - UL 60A, 80KW, 480V, 60Hz, 3 phase	E4502SS E4502RL
Discovery XR640*, Optima XR646, Discovery XR650*	E4502DC E4502DD E4502WA E4502WB	150 kW UPS (non-seismic) 250 kW UPS (non-seismic) 150 kW UPS (non-seismic) 150 kW (seismic OHSPD)	* E4504FQ	0.7kVA Partial System UPS (* indicates approval for use with these systems)	E4502WA/WB configurations include their own MBP and a wall-mounted load distribution panel. E4502DC/DD configuration includes its own wall-mounted MBP.	E4502RP - 90 Amp, Auto Restart E4502ST - 80 Amp	E4502SS E4502RL
Discovery XR656	E4502DC E4502DD E4502WA E4502WB	150 kW UPS (non-seismic) 250 kW UPS (non-seismic) 150 kW UPS (non-seismic) 150 kW (seismic OHSPD)	E4504FQ	0.7kVA Partial System UPS	E4502WA/WB configurations include their own MBP and a wall-mounted load distribution panel. E4502DC/DD configuration includes its own wall-mounted MBP.	E4502RP - 90 Amp, Auto Restart E4502ST - 80 Amp	E4502SS E4502RL

# Save time. Order accessories online with Service Shop.

## Auto-Reorder



Auto-Reorder

### Set quantity, schedule frequency

Every 3 Months ▾

Customize the quantity and order frequency that works for you.



Add to Cart

### Add to cart

It's that easy. Your first order has been placed. The product will be auto-delivered at your preferred delivery frequency.



### Manage reorders

In advance of each delivery, we will send you a reminder email for your upcoming delivery. Skip your deliveries or cancel your subscriptions at any time.



## Quick Order

Know what you need to order? Batch order multiple items at once with Quick Order on Service Shop. Enter a list of item numbers or paste from an excel spreadsheet, select quantity and add to cart. Spend less time ordering!



## Payment Options

Pay by PO or credit card or integrate your purchasing system.

## Register now at [ServiceShop.GEHealthcare.com](https://ServiceShop.GEHealthcare.com)

1. Visit GE HealthCare Service Shop, navigating to the registration link in the upper left-hand corner of the page.
2. Give us your account details. Pro tip: Provide your customer account number for expedited registration.
3. A welcome message will come to you through the email you provide. Start shopping!

# GE Adventure Series – Customized Rooms



The GE HealthCare Design team will work with a small group of your hospital staff to create a custom layout and select themed graphics from the existing catalogs, or at times, create new appliques that fit the space and flow of each room.

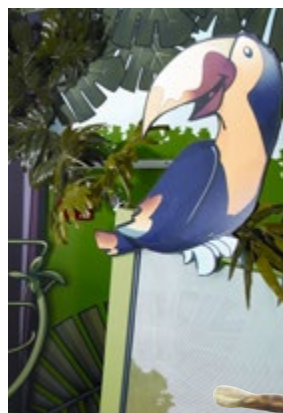


In today's crowded markets, standing out and creating a unique patient experience can be a key to success. While Adventure Series provides a range of creative options to choose from, GE HealthCare understands that some discerning facilities desire something even more unique.

For those of you seeking a product experience custom tailored to you and your facility, we are pleased to offer you the ability to customize your Adventure Series room. GE HealthCare will work with you through the custom design process to create the experience you envision.

Adventure Series can be customized for the following spaces:

- Scan rooms
- Cafeterias
- Hallways
- Stress Lab
- Waiting rooms
- Exam rooms
- Uptake rooms





# GE Adventure Series for Mobile X-ray – Starcatcher



Cat#	Description	Warranty
E1500RS**	GE Adventure Series, Starcatcher for AMX™ Navigate Mobile X-ray	Y

‡ Support collaterals (Coloring Books, Field Guides, Posters & Stickers) are not available for Adventure Series for Mobile X-ray.

## GE Adventure Series for X-ray – Cub River Falls



Please contact us for details. Our team can work with you to create an Adventure Series patient experience for your facility.

# GE Adventure Series for X-ray – Bear Brook/Playful Park



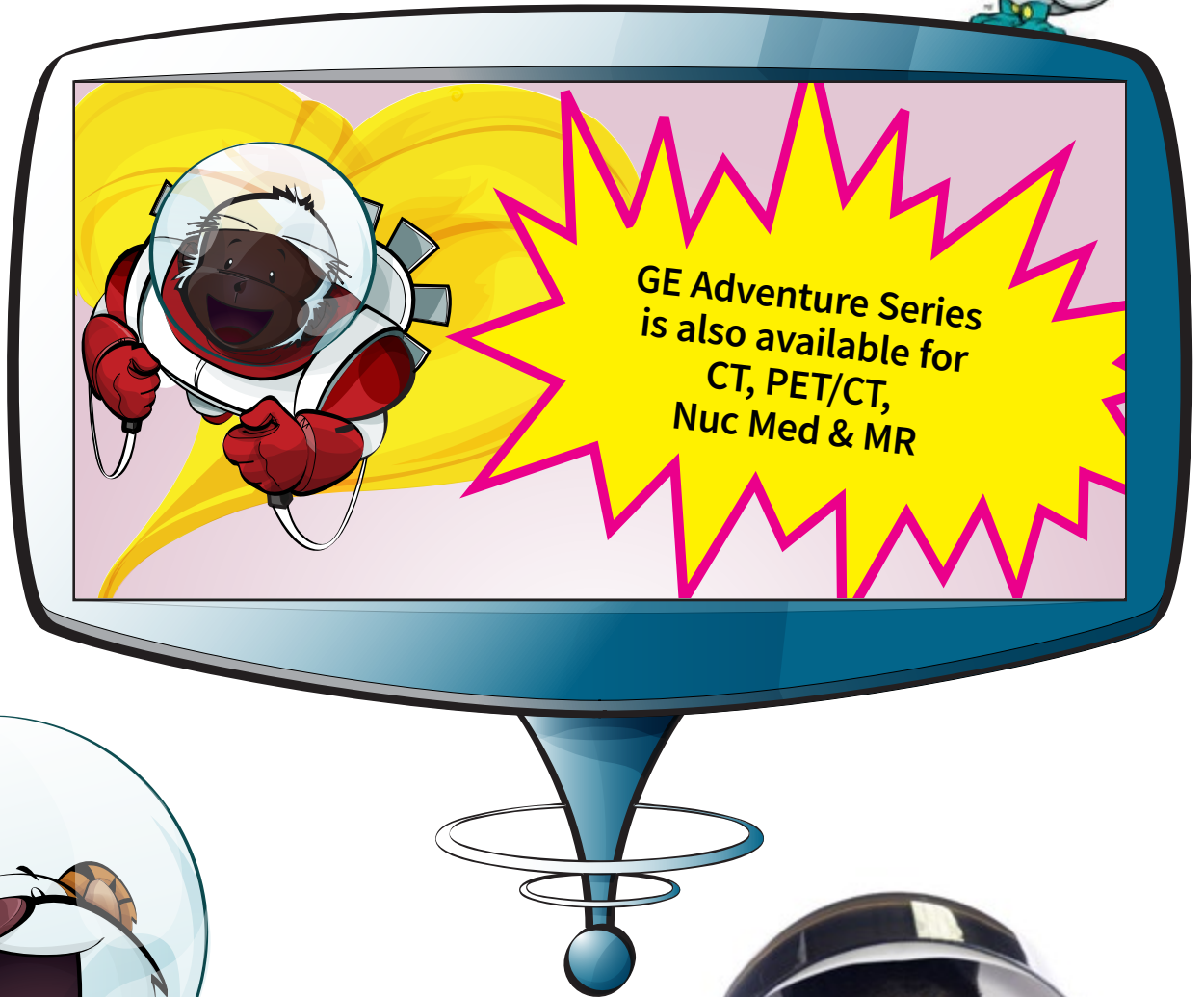
Please contact us for details. Our team can work with you to create an Adventure Series patient experience for your facility.



# GE Adventure Series for X-ray – Beachside



Please contact us for details. Our team can work with you to create an Adventure Series patient experience for your facility.



## Specifications

- All specifications are subject to change without notice
- The product and brand names herein are the trademarks or registered trademarks of their respective owners

## Pricing

- Please call to obtain current pricing. All pricing and product availability is subject to change without notice
- Price invoiced will be the price in effect at the time of order entry
- Quotations available upon request

## Blanket Purchase Orders

You can save time and money by ordering your consumable products with our Blanket Order program. Blanket orders must be scheduled for a year or more and a signed purchase order agreement must be on file. Contact us for additional details.

## Restocking Fee

- Returns are subject to, but not limited to, a minimum 15% restocking fee
- Certain items, such as sterile and environmentally controlled products within this catalog, are non-returnable and nonrefundable unless defective and have been noted as such

## Product Returns

- Immediately upon receipt, please inspect all deliveries for order accuracy and condition
- For products shipped in error, please obtain return authorization from the Accessories and Supplies Call Center within thirty (30) days of delivery
- Power Quality items are nonreturnable and nonrefundable

## Contact Us for General Information and Warranty Terms

### In U.S.

GE HealthCare  
Accessories and Supplies Customer Support Center  
P.O. Box 414, W-544  
Milwaukee, WI 53202

Phone: (866) 281-7545 – opt 1, opt 2, opt 1, opt 2

Fax: (877) 279-6990

Online: [www.gehealthcare.com/accessories](http://www.gehealthcare.com/accessories)

Email: [gehaccessorysales@ge.com](mailto:gehaccessorysales@ge.com)

### All other regions

Contact your local GE Representative.

GE HealthCare is a leading global medical technology, pharmaceutical diagnostics, and digital solutions innovator dedicated to providing integrated solutions to make hospitals more efficient, clinicians more effective, therapies more precise, and patients healthier.

Learn more at [www.gehealthcare.com](http://www.gehealthcare.com).

GE HealthCare reserves the right to make changes in specifications and features shown herein, or discontinue the product described at any time without notice or obligation. Contact your GE HealthCare representative for the most current information and availability. Please visit [www.gehealthcare.com](http://www.gehealthcare.com). Data subject to change.

©2023 General Electric Company.

GE and the GE Monogram are trademarks of General Electric Company.

GE is a trademark of General Electric Company used under trademark license.

All other product names and logos are trademarks or registered trademarks of their respective companies.

JB00644US Rev. 09/23



GE HealthCare